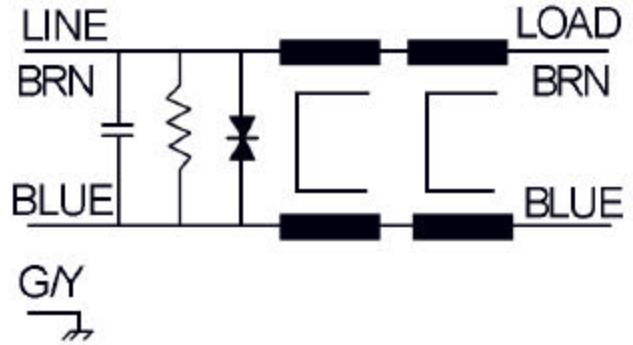


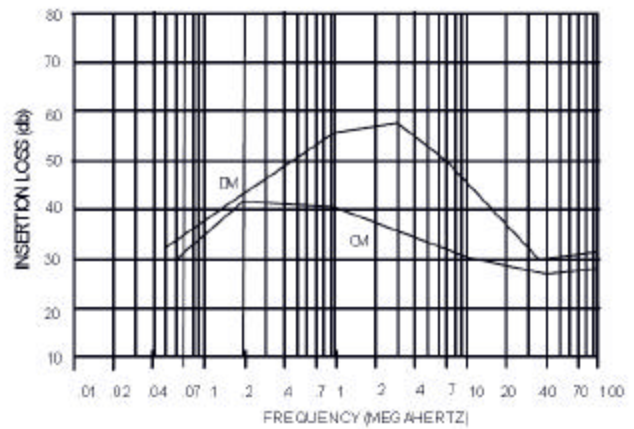


FF-1170-20

This filter is intended to provide very good insertion loss and transient protection. Mechanically the filter is intended to operate in severe temperature and vibration environments. This filter can be used in transportation vehicles such as buses, trucks, and trains.



Operating Voltage = 100 VDC
Operating Current (Max) = 20 Amp @ 50oC
15 Amp @ 70oC
Temperature Range = -40 TO 50o C
Diel. Withstand (Line - Case)= 1500 VAC For 1 Min
Transient Protection = 130 VDC Nominal
Transient Clamp = 123 - 137 VDC
Leakage Current = NIL
Discharge Volt. After 1 Sec= 31 Volts Max.



Order Part number:
FF-1170-20

