

TOSHIBA

TOSHIBA Original CMOS 4-Bit Microcontroller

TLCS-47 Series

TMP47P241VNG

TMP47P241VMG

Not Recommended
for New Design

TOSHIBA CORPORATION

Semiconductor Company

Document Change Notification

The purpose of this notification is to inform customers about the launch of the Pb-free version of the device. The introduction of a Pb-free replacement affects the datasheet. Please understand that this notification is intended as a temporary substitute for a revision of the datasheet.

Changes to the datasheet may include the following, though not all of them may apply to this particular device.

1. Part number

Example: TMPxxxxxF TMPxxxxxFG

All references to the previous part number were left unchanged in body text. The new part number is indicated on the prelims pages (cover page and this notification).

2. Package code and package dimensions

Example: LQFP100-P-1414-0.50C LQFP100-P-1414-0.50F

All references to the previous package code and package dimensions were left unchanged in body text. The new ones are indicated on the prelims pages.

3. Addition of notes on lead solderability

Now that the device is Pb-free, notes on lead solderability have been added.

4. RESTRICTIONS ON PRODUCT USE

The previous (obsolete) provision might be left unchanged on page 1 of body text. A new replacement is included on the next page.

5. Publication date of the datasheet

The publication date at the lower right corner of the prelims pages applies to the new device.

1. Part number
2. Package code and dimensions

Previous Part Number (in Body Text)	Previous Package Code (in Body Text)	New Part Number	New Package Code	OTP
TMP47P241VN	P-SDIP28-400-1.78	TMP47P241VNG	SDIP28-P-400-1.78	—
TMP47P241VM	P-SOP28-450-1.27	TMP47P241VMG	SOP28-P-450-1.27B	—

*: For the dimensions of the new package, see the attached Package Dimensions diagram.

3. Addition of notes on lead solderability

The following solderability test is conducted on the new device.

Lead solderability of Pb-free devices (with the G suffix)

Test	Test Conditions	Remark
Solderability	(1) Use of Lead (Pb) ·solder bath temperature = 230°C ·dipping time = 5 seconds ·the number of times = once ·use of R-type flux (2) Use of Lead (Pb)-Free ·solder bath temperature = 245°C ·dipping time = 5 seconds ·the number of times = once ·use of R-type flux	Leads with over 95% solder coverage till lead forming are acceptable.

4. RESTRICTIONS ON PRODUCT USE

The following replaces the “RESTRICTIONS ON PRODUCT USE” on page 1 of body text.

RESTRICTIONS ON PRODUCT USE

20070701-EN

<ul style="list-style-type: none"> • The information contained herein is subject to change without notice. • TOSHIBA is continually working to improve the quality and reliability of its products. Nevertheless, semiconductor devices in general can malfunction or fail due to their inherent electrical sensitivity and vulnerability to physical stress. It is the responsibility of the buyer, when utilizing TOSHIBA products, to comply with the standards of safety in making a safe design for the entire system, and to avoid situations in which a malfunction or failure of such TOSHIBA products could cause loss of human life, bodily injury or damage to property. In developing your designs, please ensure that TOSHIBA products are used within specified operating ranges as set forth in the most recent TOSHIBA products specifications. Also, please keep in mind the precautions and conditions set forth in the “Handling Guide for Semiconductor Devices,” or “TOSHIBA Semiconductor Reliability Handbook” etc. • The TOSHIBA products listed in this document are intended for usage in general electronics applications (computer, personal equipment, office equipment, measuring equipment, industrial robotics, domestic appliances, etc.). These TOSHIBA products are neither intended nor warranted for usage in equipment that requires extraordinarily high quality and/or reliability or a malfunction or failure of which may cause loss of human life or bodily injury (“Unintended Usage”). Unintended Usage include atomic energy control instruments, airplane or spaceship instruments, transportation instruments, traffic signal instruments, combustion control instruments, medical instruments, all types of safety devices, etc.. Unintended Usage of TOSHIBA products listed in his document shall be made at the customer’s own risk. • The products described in this document shall not be used or embedded to any downstream products of which manufacture, use and/or sale are prohibited under any applicable laws and regulations. • The information contained herein is presented only as a guide for the applications of our products. No responsibility is assumed by TOSHIBA for any infringements of patents or other rights of the third parties which may result from its use. No license is granted by implication or otherwise under any patents or other rights of TOSHIBA or the third parties. • Please contact your sales representative for product-by-product details in this document regarding RoHS compatibility. Please use these products in this document in compliance with all applicable laws and regulations that regulate the inclusion or use of controlled substances. Toshiba assumes no liability for damage or losses occurring as a result of noncompliance with applicable laws and regulations. • For a discussion of how the reliability of microcontrollers can be predicted, please refer to Section 1.3 of the chapter entitled Quality and Reliability Assurance/Handling Precautions.

5. Publication date of the datasheet

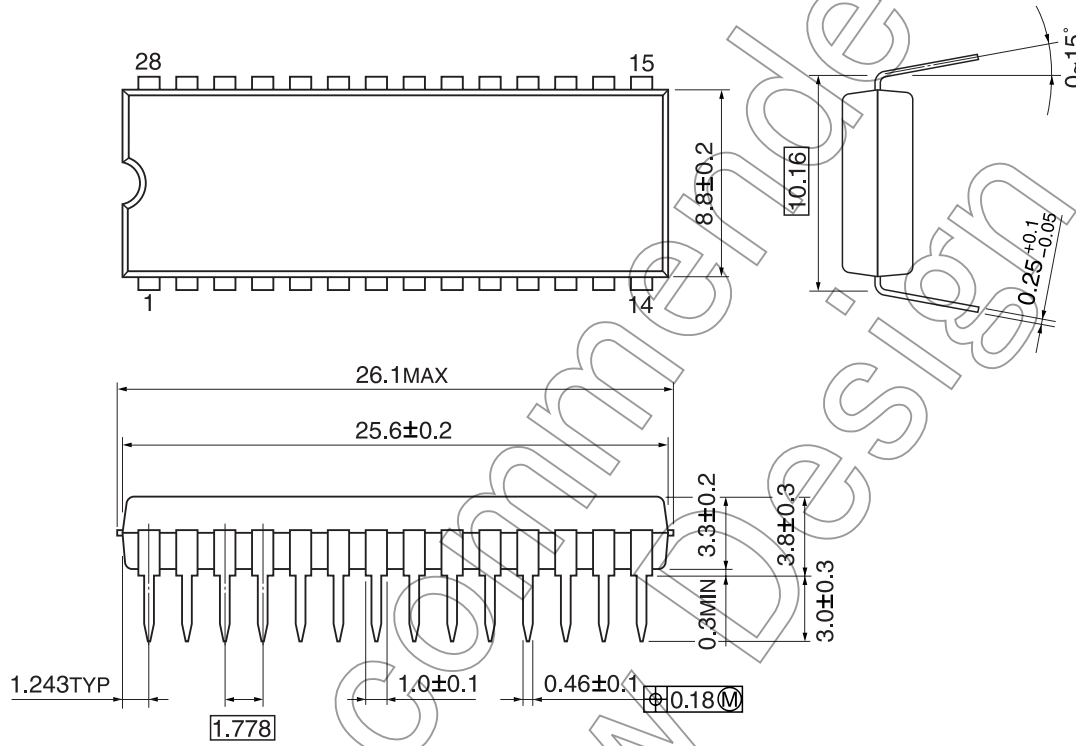
The publication date of this datasheet is printed at the lower right corner of this notification.

(Annex)

Package Dimensions

SDIP28-P-400-1.78

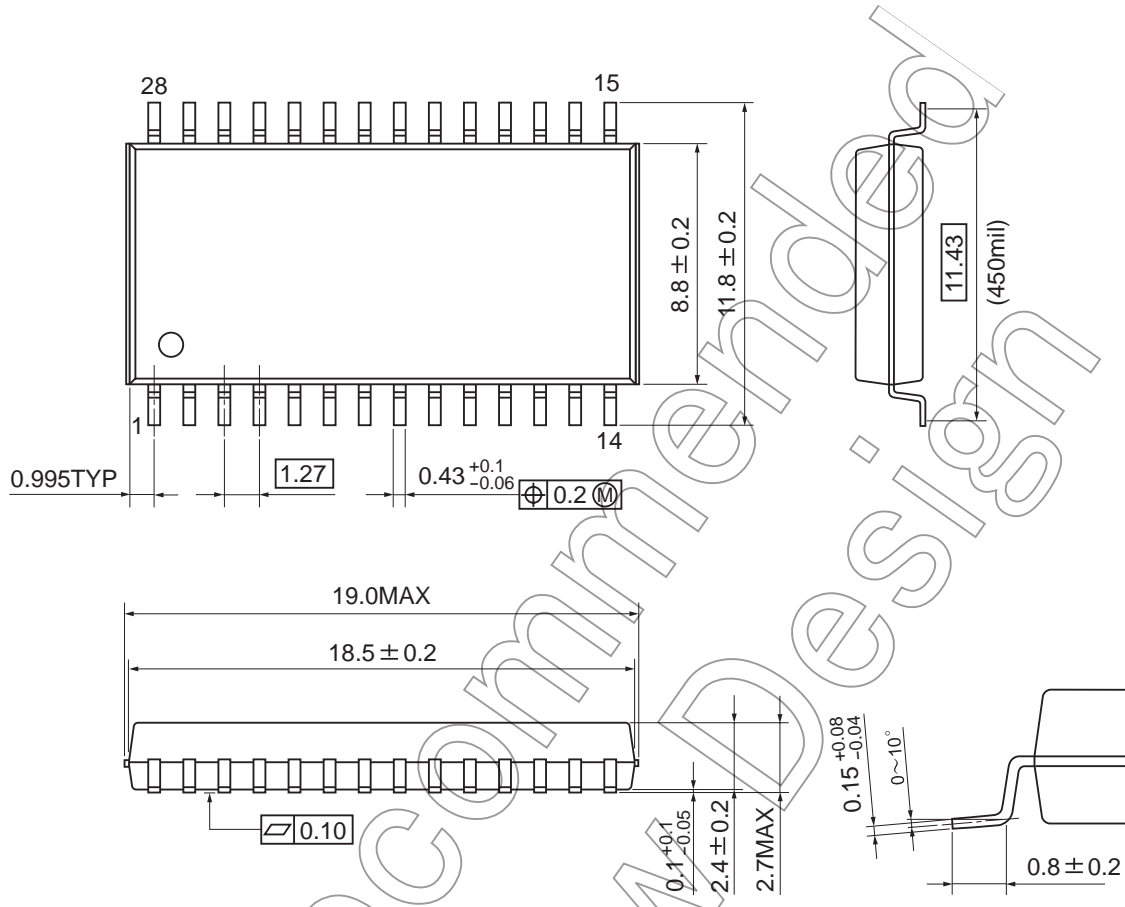
Unit: mm



Not Recommended for New Design

SOP28-P-450-1.27B

Unit: mm



Note: Palladium plated

Not Recommended for New Design

CMOS 4-Bit Microcontroller

TMP47P241VN
TMP47P241VM

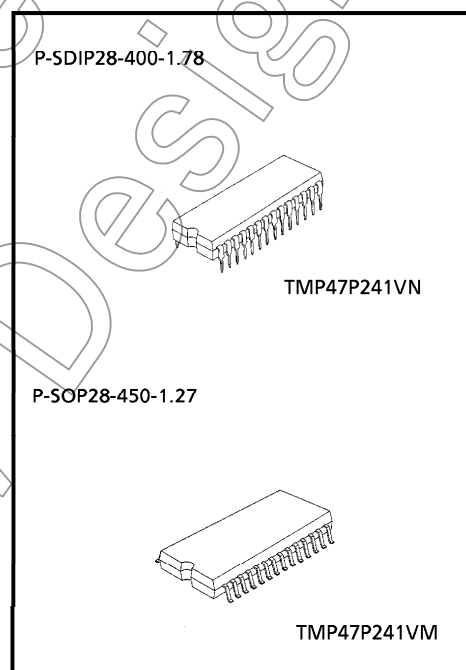
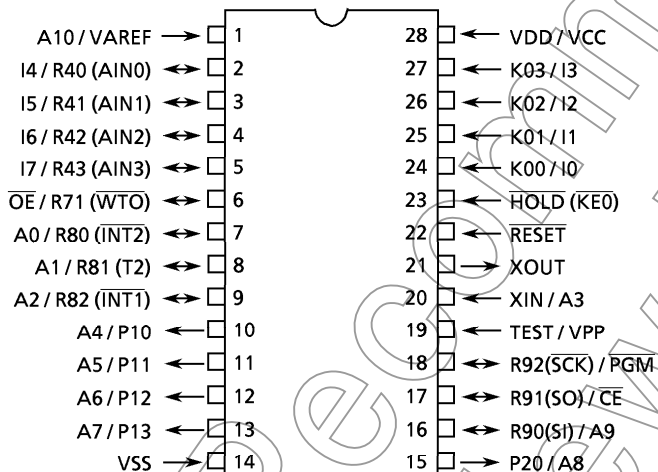
The TMP47P241V is the system evaluation LSI of TMP47C241 with a 16 Kbit one-time PROM. The TMP47P241V programs / verifies using an adaptor socket to connect with PROM programmer, as it is in TMM2764AD.

In addition, the TMP47P241V and the TMP47C241 are pin compatible. The TMP47P241V operates as the same as the TMP47C241 by programming to the internal PROM.

Part No.	ROM	RAM	Package	Adaptor Socket
TMP47P241VN	OTP	128 × 4-bit	P-SDIP28-400-1.78	BM1156
TMP47P241VM	2048 × 8-bit		P-SOP28-450-1.27	BM1157

Pin Assignment (Top View)

P-SDIP28-400-1.78 / P-SOP28-450-1.27



000707EBA1

- For a discussion of how the reliability of microcontrollers can be predicted, please refer to Section 1.3 of the chapter entitled Quality and Reliability Assurance / Handling Precautions.
- TOSHIBA is continually working to improve the quality and reliability of its products. Nevertheless, semiconductor devices in general can malfunction or fail due to their inherent electrical sensitivity and vulnerability to physical stress. It is the responsibility of the buyer, when utilizing TOSHIBA products, to comply with the standards of safety in making a safe design for the entire system, and to avoid situations in which a malfunction or failure of such TOSHIBA products could cause loss of human life, bodily injury or damage to property. In developing your designs, please ensure that TOSHIBA products are used within specified operating ranges as set forth in the most recent TOSHIBA products specifications. Also, please keep in mind the precautions and conditions set forth in the "Handling Guide for Semiconductor Devices," or "TOSHIBA Semiconductor Reliability Handbook" etc..
- The TOSHIBA products listed in this document are intended for usage in general electronics applications (computer, personal equipment, office equipment, measuring equipment, industrial robotics, domestic appliances, etc.). These TOSHIBA products are neither intended nor warranted for usage in equipment that requires extraordinarily high quality and/or reliability or a malfunction or failure of which may cause loss of human life or bodily injury ("Unintended Usage"). Unintended Usage include atomic energy control instruments, airplane or spaceship instruments, transportation instruments, traffic signal instruments, combustion control instruments, medical instruments, all types of safety devices, etc.. Unintended Usage of TOSHIBA products listed in this document shall be made at the customer's own risk.
- The products described in this document are subject to the foreign exchange and foreign trade laws.
- The information contained herein is presented only as a guide for the applications of our products. No responsibility is assumed by TOSHIBA CORPORATION for any infringements of intellectual property or other rights of the third parties which may result from its use. No license is granted by implication or otherwise under any intellectual property or other rights of TOSHIBA CORPORATION or others.
- The information contained herein is subject to change without notice.

Pin Function

The TMP47P241V has MCU mode and PROM mode.

(1) MCU mode

The TMP47C241 and the TMP47P241V are pin compatible (TEST pin for out-going test. Be fixed to low level).

(2) PROM mode

Pin Name	Input/Output	Functions	Pin Name (MCU mode)
A10	INPUT	Address inputs	VAREF
A9			R90
A8			P20
A7 to A4			P13 to P10
A3			XIN
A2 to A0			R82 to R80
I7 to I4			I/O
I3 to I0	K03 to K00		
$\overline{\text{PGM}}$	Input	Program control input	R92
$\overline{\text{CE}}$		Chip Enable input	R91
$\overline{\text{OE}}$		Output Enable input	R71
VPP	Power supply	+ 12.5 V / 5 V (Program supply voltage)	TEST
VCC		+ 5 V	VDD
VSS		0 V	VSS
RESET	Input	PROM mode setting pin. Be fixed to low level.	
HOLD	Input		
XOUT	Input	Input the clock from the external oscillator.	

Operational Description

The following is an explanation of hardware configuration and operation in relation to the TMP47P241V. The TMP47P241V is the same as the TMP47C241 except that an OTP is used instead of a built-in mask ROM.

1. Operation mode

The TMP47P241V has an MCU mode and a PROM mode.

1.1 MCU mode

The MCU mode is set by fixing the TEST/VPP pin at the "L" level. Operation in the MCU mode is the same as for the TMP47C241, except that the TEST/VPP pin does not have built-in pull-down resistor and cannot be used open. In the TMP47P241V, RC oscillation is impossible.

1.1.1 Program Memory

The program storage area is the same as for the TMP47C241.

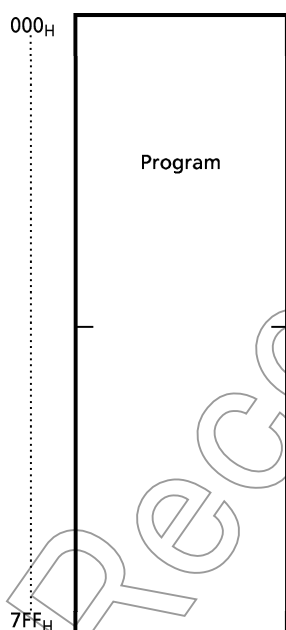


Figure 1-1. Program area (ROM)

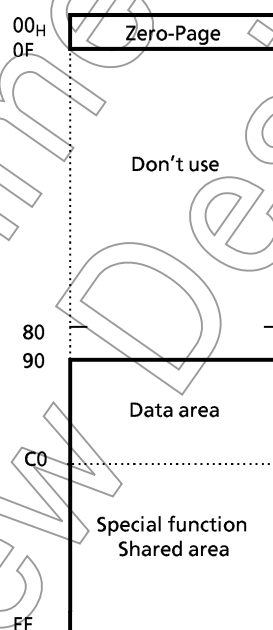


Figure 1-2. RAM addressing

1.1.2 Data Memory

The TMP47P241V has 128 × 4-bit of data memory (RAM).

When the TMP47C940A is used as evaluator of the TMP47C241V, programming should be performed assuming that the RAM is assigned to addresses 00 to 7FH and 90 to FFH as show in Figure 1-2 by considering the application software evaluation. When the BM47214A (emulator) is used as the TMP47C241 evaluator, it is same.

1.1.3 Input / Output Circuitry

(1) Control pins

This is the same as for the TMP47C241 except that there is no built-in pull-down resistance for the TEST pin. In the TMP47P241V, RC oscillation is impossible. Connecting the resonator is required when using as evaluator of I/O code SG.

(2) I/O Ports

The input/output circuit of the TMP47P241V is the same as I/O code SA of the TMP47C241. External resistance, for example, is required when using as evaluator of other I/O codes (SB, SC).



Figure 1-3. I/O code and external circuitry

1.2 PROM mode

The PROM mode is set by setting the $\overline{\text{RESET}}$, $\overline{\text{HOLD}}$ pins to the "L" level. In PROM mode, programs can be written or verified using a general-purpose PROM writer with an adapter socket being attached. (A high-speed program mode is used is used set the ROM type the same as for the TMM2764AD.)

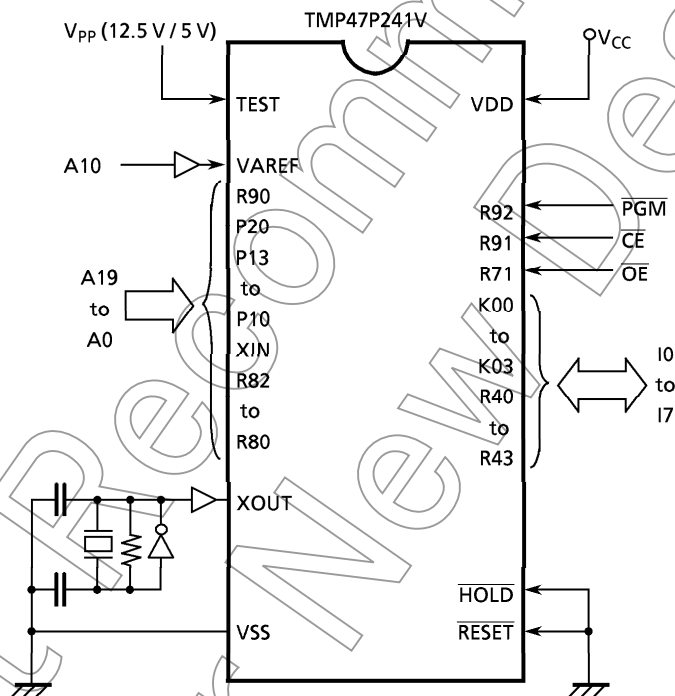


Figure 1-4. Setting for PROM mode

1.2.1 Program Writing

When writing a program, set a ROM type to "2764A" (programming voltage: 12.5 V) . Since the TMP47P241V has a 2048 × 8-bit internal PROM (000 to 7FF_H) , set a stop address of a PROM writer to "7FF_H" . For a general-purpose PROM writer, use the writer which does not have or can release an electric signature mode.

1.2.2 High Speed Programming Mode

The program time can be greatly decreased by using this high speed programming mode. The device is set up in the high speed programming mode when the programming voltage (+ 12.5 V) is applied to the V_{PP} terminal with $V_{CC} = 6 V$ and $\overline{PGM} = V_{IH}$.

The programming is achieved by applying a single low level 1ms pulse the \overline{PGM} input after addresses and data are stable. Then the programmed data is verified by using Program Verify Mode.

If the programmed data is not correct, another program pulse of 1ms is applied and then programmed data is verified. This should be repeated until the program operates correctly (max. 25 times).

After correctly programming the selected address, one additional program pulse with pulse width 3 times that needed for programming is applied.

When programming has been completed, the data in all addresses should be verified with $V_{CC} = V_{PP} = 5 V$.

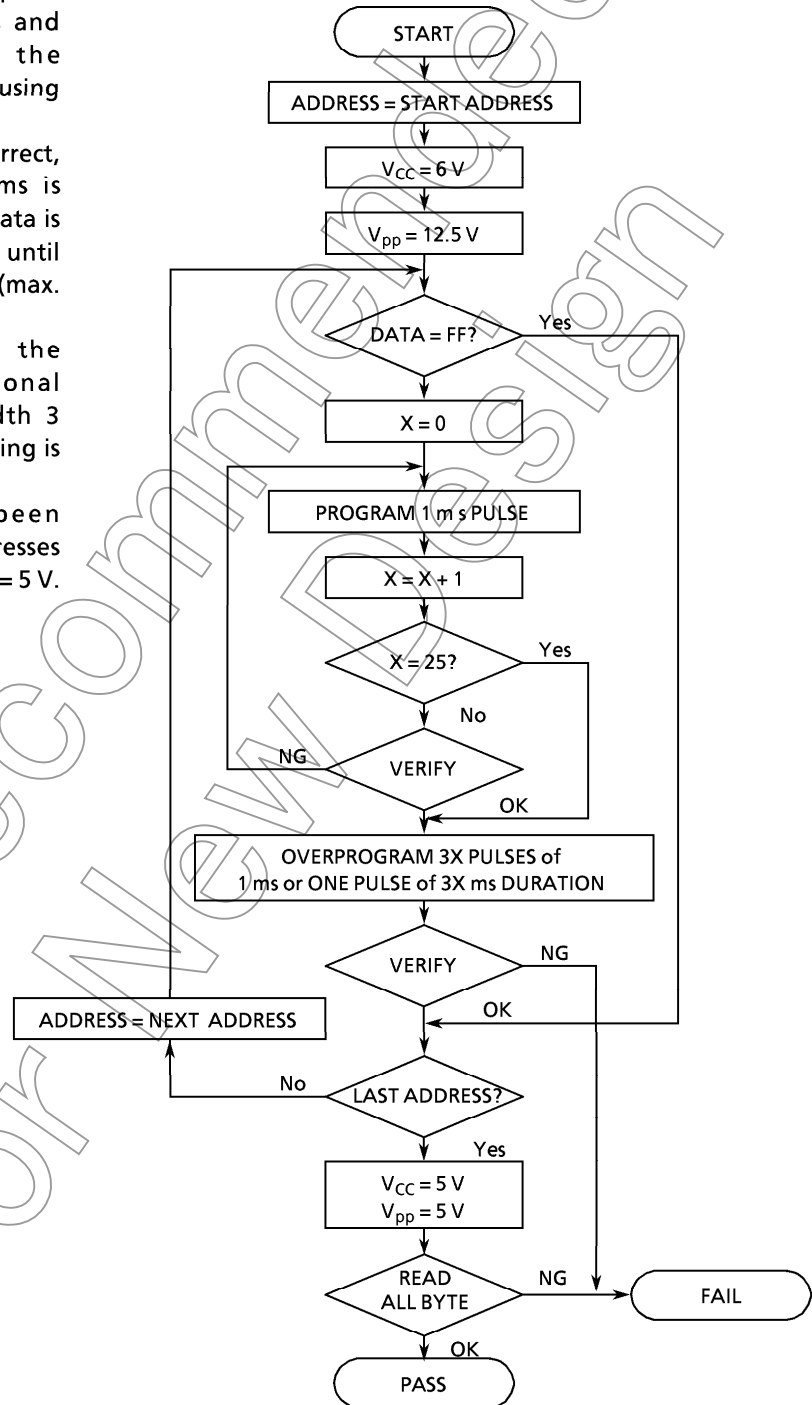


Figure 1-5. Flowchart

Electrical Characteristics

Absolute Maximum Ratings (V_{SS} = 0 V)

Parameter	Symbol	Pins	Ratings	Unit
Supply Voltage	V _{DD}		-0.3 to 7	V
Program Voltage	V _{PP}	HOLD/VPP pin	-0.3 to 14.0	V
Input Voltage	V _{IN}		-0.3 to V _{DD} + 0.3	V
Output Voltage	V _{OUT1}	Except sink open drain pin	-0.3 to V _{DD} + 0.3	V
	V _{OUT2}	Ports P1, P2, R7 to R9	-0.3 to 10	
	V _{OUT3}	Port R4 (Analog inputs)	-0.3 to V _{DD} + 0.3	
Output Current (Per 1 pin)	I _{OUT1}	Ports P1, P2	30	mA
	I _{OUT2}	Port R9	15	
	I _{OUT3}	Ports R4, R7, R8	3.2	
Output Current (Total)	Σ I _{OUT1}	Ports P1, P2, R9	120	mA
Power Dissipation [Topr = 70°C]	PD		300	mW
Soldering Temperature (time)	T _{sld}		260 (10s)	°C
Storage Temperature	T _{stg}		-55 to 125	°C
Operating Temperature	Topr		-30 to 70	°C

Note: The absolute maximum ratings are rated values which must not be exceeded during operation, even for an instant. Any one of the ratings must not be exceeded. If any absolute maximum rating is exceeded, a device may break down or its performance may be degraded, causing it to catch fire or explode resulting in injury to the user. Thus, when designing products which include this device, ensure that no absolute maximum rating value will ever be exceeded.

Recommended Operating Conditions (V_{SS} = 0 V, Topr = -30 to 70°C)

Parameter	Symbol	Pins	Conditions	Min	Max	Unit
Supply Voltage	V _{DD}		fc = 6.0 MHz	4.5	6.0	V
			fc = 4.2 MHz	2.7		
			In the HOLD mode	2.0		
Input High Voltage	V _{IH1}	Except Hysteresis Input	In the normal operating area	V _{DD} × 0.7	V _{DD}	V
	V _{IH2}	Hysteresis Input		V _{DD} × 0.75		
	V _{IH3}		In the HOLD mode	V _{DD} × 0.9		
Input Low Voltage	V _{IL1}	Except Hysteresis Input	In the normal operating area	0	V _{DD} × 0.3	V
	V _{IL2}	Hysteresis Input			V _{DD} × 0.25	
	V _{IL3}		In the HOLD mode		V _{DD} × 0.1	
Clock Frequency	fc		V _{DD} = 4.5 to 6.0 V	0.4	6.0	MHz
			V _{DD} = 2.7 to 6.0 V		4.2	

Note: The recommended operating conditions for a device are operating conditions under which it can be guaranteed that the device will operate as specified. If the device is used under operating conditions other than the recommended operating conditions (supply voltage, operating temperature range, specified AC/DC values etc.), malfunction may occur. Thus, when designing products which include this device, ensure that the recommended operating conditions for the device are always adhered to.

DC Characteristics

(V_{SS} = 0 V, T_{opr} = -30 to 70°C)

Parameter	Symbol	Pins	Conditions	Min	Typ.	Max	Unit
Hysteresis Voltage	V _{HS}	Hysteresis Input		—	0.7	—	V
Input Current	I _{IN1}	Port K0, TEST, RESET, HOLD	V _{DD} = 5.5 V,	—	—	±2	μA
	I _{IN2}	Ports R (open drain)	V _{IN} = 5.5 V / 0 V				
Input Resistance	R _{IN1}	Port K0 with pull-up/pull-down		30	70	150	kΩ
	R _{IN2}	RESET		100	220	450	
Output Leakage Current	I _{LO}	Ports R, P (open drain)	V _{DD} = 5.5 V, V _{OUT} = 5.5 V	—	—	2	μA
Output Low Voltage	V _{OL2}	Except XOUT, ports P	V _{DD} = 4.5 V, I _{OL} = 1.6 mA	—	—	0.4	V
Low Output Current	I _{OL1}	Ports P1, P2	V _{DD} = 4.5 V, V _{OL} = 1.0 V	—	20	—	mA
	I _{OL2}	Port R9		—	7	—	
Supply Current (in the Normal mode)	I _{DD}		V _{DD} = 5.5 V, f _c = 4 MHz	—	2	4	mA
			V _{DD} = 3.0 V, f _c = 4 MHz	—	1	2	
			V _{DD} = 3.0 V, f _c = 400 kHz	—	0.5	1	
Supply Current (in the HOLD mode)	I _{DDH}		V _{DD} = 5.5 V	—	0.5	10	μA

Note 1: Typ. values show those at T_{opr} = 25°C, V_{DD} = 5 V.

Note 2: Input Current I_{IN1}; The current through resistor is not included, when the input resistor (pull-up / pull-down) is contained.

Note 3: Supply Current I_{DD}, I_{DDH}; V_{IN} = 5.3 V / 0.2 V

The K0 port is open when the input resistor is contained. The voltage applied to the R port is within the valid range.

AD Conversion Characteristics

(T_{opr} = -30 to 70°C)

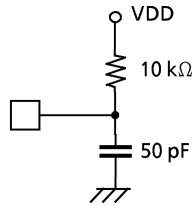
Parameter	Symbol	Conditions	Min	Typ.	Max	Unit
Analog Reference Voltage	V _{AREF}		V _{DD} - 1.5	—	V _{DD}	V
Analog Reference Voltage Range	ΔV _{AREF}	V _{AREF} - V _{SS}	2.7	—	—	V
Analog Input Voltage	V _{AIN}		V _{SS}	—	V _{AREF}	V
Analog Supply current	I _{REF}		—	0.5	1.0	mA
Nonlinearity Error		V _{DD} = 5.0 V, V _{SS} = 0.0 V	—	—	±1	LSB
Zero Point Error			—	—	±1	
Full Scale Error			—	—	±1	
Total Error			—	—	±2	

AC Characteristics

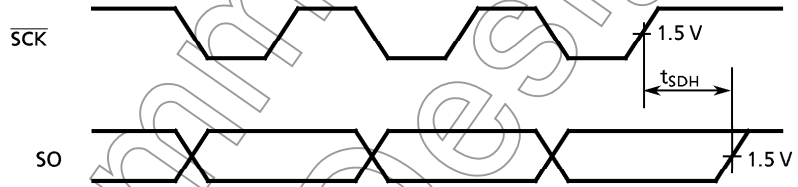
(V_{SS} = 0 V, Topr = - 30 to 70°C)

Parameter	Symbol	Conditions	Min	Typ.	Max	Unit
Instruction Cycle Time	t _{cy}	V _{DD} = 4.5 to 6.0 V	1.3	—	20	μs
		V _{DD} = 2.7 to 6.0 V	1.9	—	—	—
High level Clock pulse Width	t _{WCH}	External clock mode	80	—	—	ns
Low level Clock pulse Width	t _{WCL}					
AD Sampling Time	t _{AIN}	f _c = 4 MHz	—	4	—	μs
Shift Data Hold Time	t _{SDH}		0.5 t _{cy} - 0.3	—	—	μs

Note: Shift Data Hold Time
External circuit for SCK pin and SO pin



Serial port (completion of transmission)



Recommended Oscillating Conditions

(V_{SS} = 0 V, V_{DD} = 4.5 to 6.0 V, Topr = - 40 to 70°C)

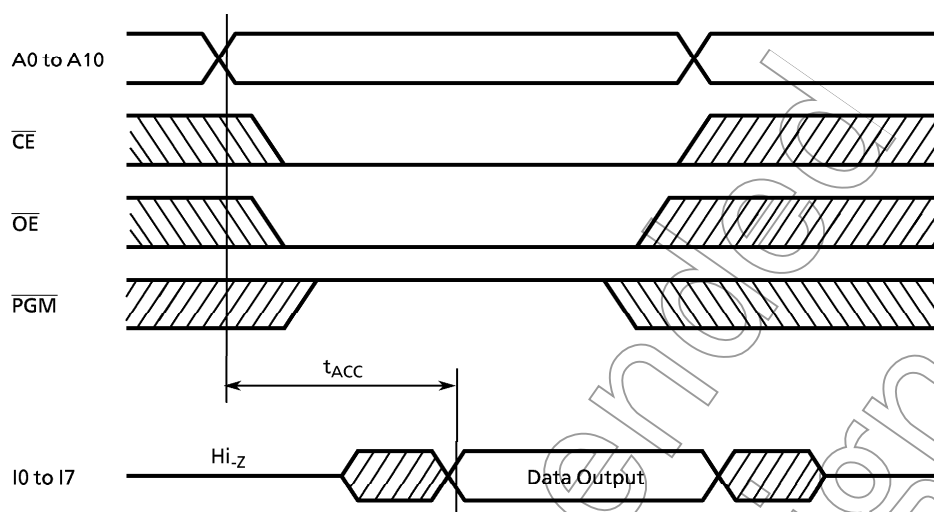
Recommended oscillating conditions of the TMP47P241V are equal to the TMP47C241's but RC oscillation is impossible.

DC/AC Characteristics

(V_{SS} = 0 V)

(1) Read Operation

Parameter	Symbol	Condition	Min	Typ.	Max	Unit
Output Level High Voltage	V _{IH4}		V _{CC} × 0.7	—	V _{CC}	V
Output Level Low Voltage	V _{IL4}		0	—	V _{CC} × 0.3	V
Supply Voltage	V _{CC}		4.75	—	6.0	V
Programming Voltage	V _{PP}		—	—	—	—
Address Access Time	t _{ACC}	V _{CC} = 5.0 ± 0.25 V	0	—	350	ns



(2) High Speed Programming Operation

Parameter	Symbol	Condition	Min	Typ.	Max	Unit
Input High Voltage	V _{IH4}		V _{CC} × 0.7	–	V _{CC}	V
Input Low Voltage	V _{IL4}		0	–	V _{CC} × 0.3	V
Supply Voltage	V _{CC}		4.75	–	6.0	V
V _{PP} Power Supply Voltage	V _{PP}		12.00	12.50	13.00	V
Programming Pulse Width	t _{PW}	V _{CC} = 6.0 ± 0.25 V	0.95	1.0	1.05	ms

