

FEATURES AND SPECIFICATIONS

Features and Benefits

- Sizes 3 to 6 circuits

Reference Information

Packaging: Bag
 UL File No.: E29179
 CSA File No.: LR19980
 Mates With: 5279-NA
 Designed In: Millimeters

Electrical

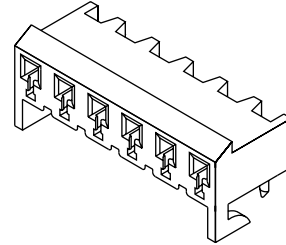
Voltage: 250V
 Current: 7.0A
 Contact Resistance: 10mΩ max.
 Dielectric Withstanding Voltage: 1500V AC/1 min.
 Insulation Resistance: 1000 MΩ min.

Physical

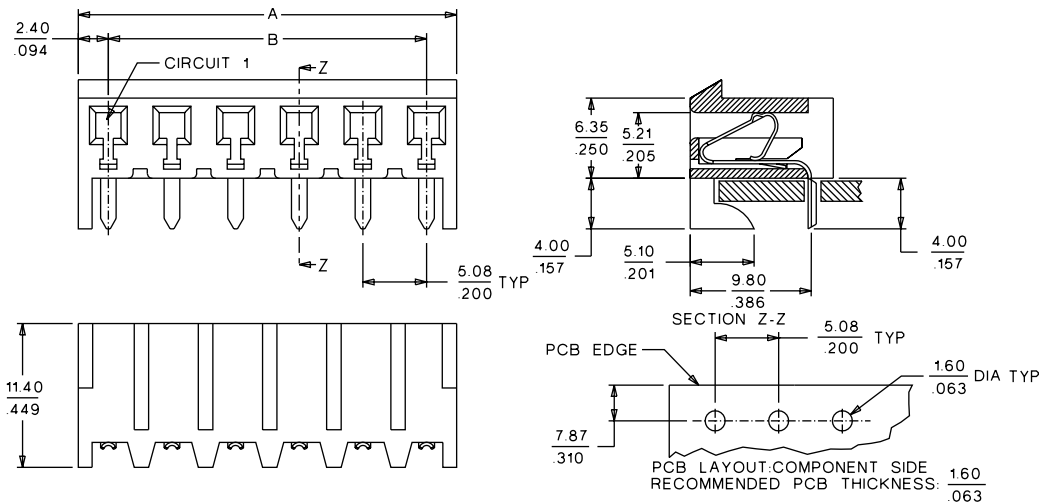
Housing: 6/6 nylon, UL 94V-2
 Contact: Brass
 Plating: Tin over Copper
 Operating Temperature: -40 to +105°C

molex® 5.08mm (.200") Pitch PC Board Connector

2767-NAH Right Angle Mount



CATALOG DRAWING (FOR REFERENCE ONLY)



ORDERING INFORMATION AND DIMENSIONS

Circuits	Order No.	Dimension	
		A	B
3	10-05-1033	14.96 (.589)	10.16 (.400)
4	10-05-1043	20.04 (.789)	15.24 (.600)
5	10-05-1053	25.12 (.989)	20.32 (.800)
6	10-05-1063	30.20 (1.189)	25.40 (1.000)

3.00 to 7.92mm (.118 to .312") Pitch

D