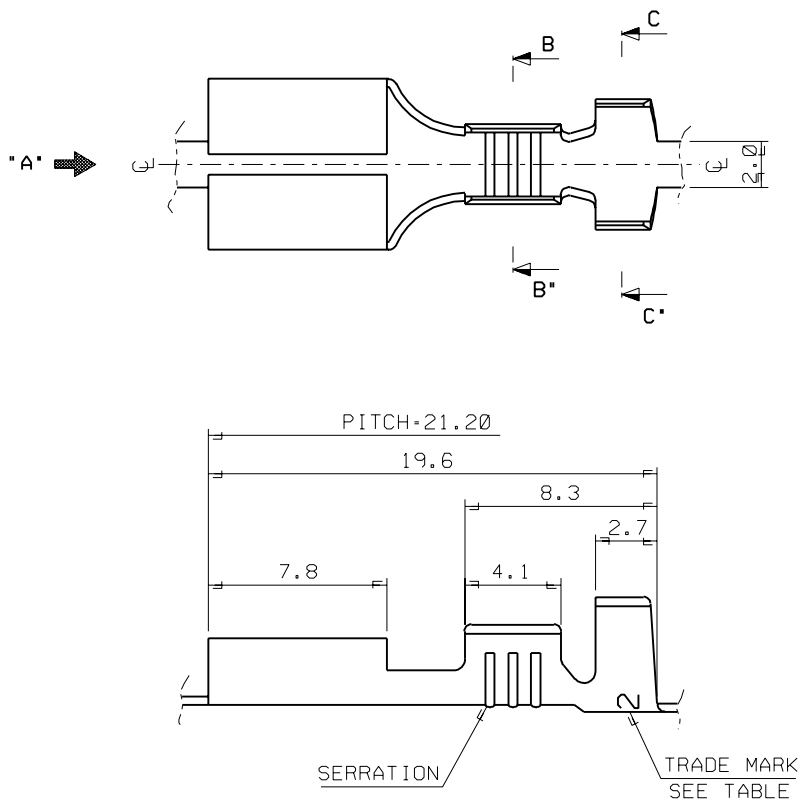
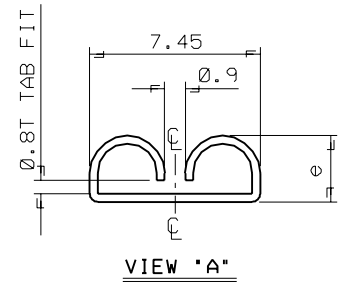


DWG. NO. SD 35725-3\*\*0  
 PROJECT NO. .250 SLIP-ON REC'  
 SIMILAR ITEM  
 DO NOT SCALE DRAWING DIMENSION IN METRIC

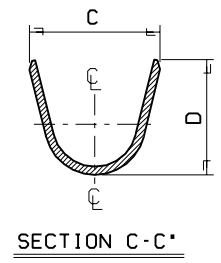
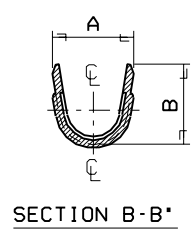


NOTES

1. MATERIAL : BRASS 0.35 mm THICKNESS
2. FINISH : UNPLATED(35725-360\*/370\*/380\*)  
POST-TIN PLATING(35725-3610/3710/3810)
3. RECOMMENDED LENGTH OF WIRE STRIP IS 5.2-5.8 mm
4. MATED TAB TENSION  
35725-36\*0/37\*0/38\*0 : STANDARD TENSION  
35725-3601/3701/3801 : LOW TENSION

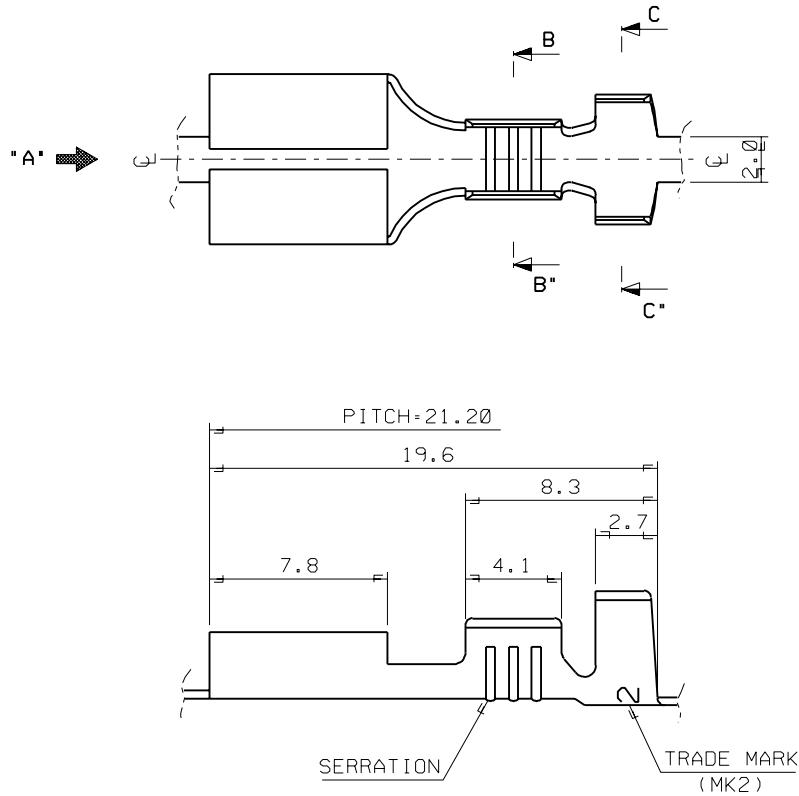


ENG. NO.	a	b	c	d	e	WIRE RANGE	Q'TY/REEL	TRADE MARK
35725-36*0	5.2	4.6	6.3	6.3	2.9	AWG #14-#12	4,000	MK2
35725-37*0	3.5	3.5	5.7	5.0	2.9	AWG #18-#14	5,000	
35725-38*0	2.85	2.9	3.8	3.8		AWG #22-#20	5,000	
35725-3601	5.2	4.6	6.3	6.3	2.95	AWG #14-#12	4,000	L MK2
35725-3701	3.5	3.5	5.7	5.0		AWG #18-#14	5,000	
35725-3801	2.85	2.9	3.8	3.8		AWG #22-#20	5,000	



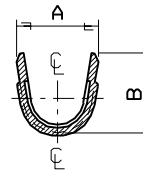
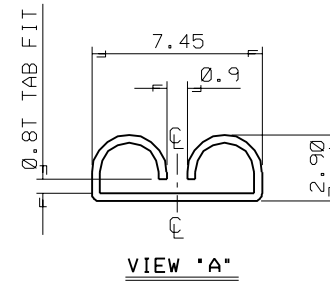
REVISED EC NO. KOR2000-0006 DRWN:W.YANG 00/02/08 CHK: APP:	DESCRIPTION MAJOR = 0 CRITICAL = 0	GENERAL TOLERANCES: (UNLESS SPECIFIED)		SCALE 5:1	DESIGN UNITS <input checked="" type="checkbox"/> mm <input type="checkbox"/> INCH	DIMENSIONS: <input type="checkbox"/> mm <input type="checkbox"/> INCH <input checked="" type="checkbox"/> mm ONLY		SHT	REV	
		4 PLACES ±0.	mm	INCH	DRAWN BY & DATE J.S.KANG 93/04/27		TITLE: .250 SLIP-ON RECEPTACLE			
		3 PLACES ±0.			CHECKED BY & DATE B.K.CHOI 93/04/27					
		2 PLACES ±0.30			APPROVED BY & DATE C.W.LEE 93/04/27		MOLEX INCORPORATED KOREA			
1 PLACE ±0.30			ANGULAR: ± °		CAD FILENAME S7253600.DGN		MATERIAL NO. SEE TABLE	DRAWING NO. SD-35725-3600	SHEET NO. 10F1	
DRAFT WHERE APPLICABLE MUST REMAIN WITHIN DIMENSIONS				THIS DRAWING CONTAINS INFORMATION THAT IS PROPRIETARY TO MOLEX INCORPORATED AND SHOULD NOT BE USED WITHOUT WRITTEN PERMISSION.						SIZE B

ENG. NO. SD\_35725-3\*0  
 EDP NO.  
 SIMILAR ITEM  
 PROJECT NO. .250 SLIP-ON REC'

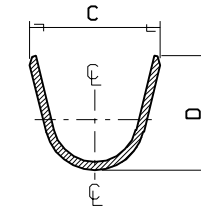


NOTES

1. MATERIAL : BRASS 0.35 MM THICKNESS
2. FINISH : UNPLATED(35725-3600/3700/3800)  
POST-TIN PLATING(35725-3610/3710/3810)
3. RECOMMENDED LENGTH OF WIRE STRIP IS 5.2-5.8 MM



SECTION B-B'



SECTION C-C'

ENG. NO.	A	B	C	D	WIRE RANGE	Q' TY/REEL
35725-36*0	5.2	4.6	6.3	6.3	AWG #14-#12	4,000
35725-37*0	3.5	3.5	5.7	5.0	AWG #18-#14	5,000
35725-38*0	2.85	2.9	3.8	3.8	AWG #22-#20	5,000

				MATERIAL SEE NOTES		molex MOLEX-KOREA CO.,LTD.	
				GENERAL TOLERANCE DIMENSION : +0.30		DRAWN BY J.S.KANG	
				ANGLE :		CHK'D BY	
C	REVISED		97.8.27	DIMENSION CLASSIFICATION		APPR'D BY	
B	REVISED		96.6.5	▽ : CRITICAL ▼ : MAJOR		SCALE 5/1	
A	CAD REDRAWING	93.011	93.4.27	() : REFERENCE		TITLE :	
LTR	REVISION RECORD	ECN	DATE	ASS'Y PART DESCRIPTION ENG. NO.		.250 SLIP-ON REC' (S,M,L)	
REVISE ONLY ON CAD SYSTEM						SHEET 1 OF 1	
						ENG. NO. SD 35725-36*0/37*0/38*0	
						REV C	