

## FEATURES AND SPECIFICATIONS

### Features and Benefits

- Sizes 2 to 18 circuits
- Provides left to right polarization when mated with 41695 or 43061 .156" crimp housing with the optional polarizing ribs
- Various pin lengths available
- Voided circuits available (contact Molex)
- Passive locking feature is used to maintain interconnection, ideal for high vibration applications
- End-to-end stackable

### Reference Information

Product Specification: PS-08-50

Packaging: Bag

UL File No.: E29179

CSA File No.: LR19980

TUV File No.: R75108

Mates With: [2139](#), [2145](#), [3069](#), [6442](#), [7674](#), [7675](#),

[41695](#) and [41815](#)

Designed In: Inches

### Electrical

Voltage: 250V

Current: 7.0A

Contact Resistance: 6mΩ max.

Dielectric Withstanding Voltage: 1500V

Insulation Resistance: 50K MΩ min.

### Mechanical

Durability:

Tin—25 cycles max.

Gold—100 cycles max.

### Physical

Housing: Polyester, UL 94V-0

Contact: Brass, 1.14mm (.045") pin

Plating: See Table

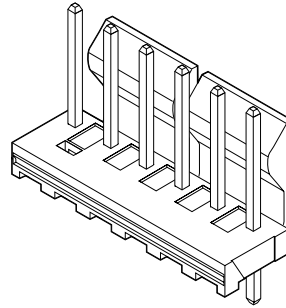
Operating Temperature: 0 to +75°C

**molex®** **3.96mm (.156") Pitch**  
**KK®**

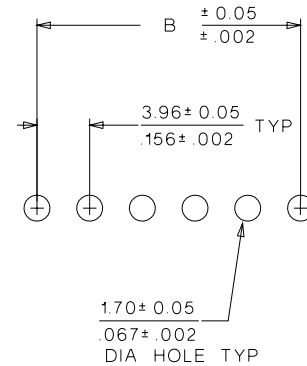
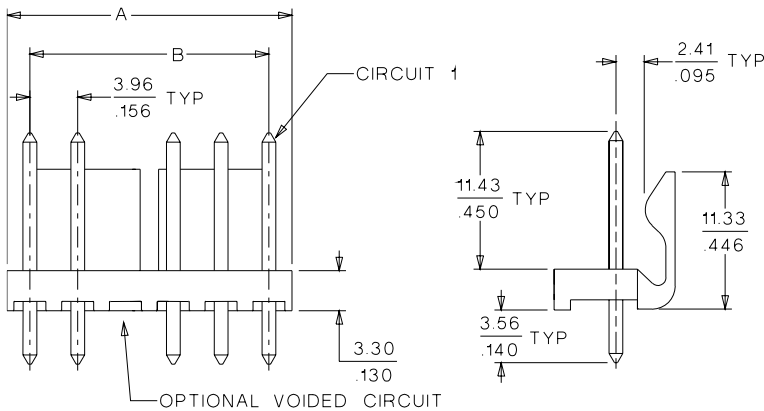
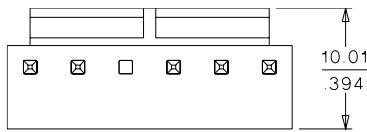
**Solid Header**

**41791**

**Vertical**  
**Friction Lock**



## CATALOG DRAWING (FOR REFERENCE ONLY)

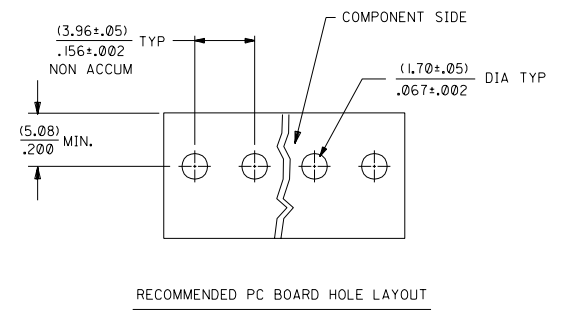
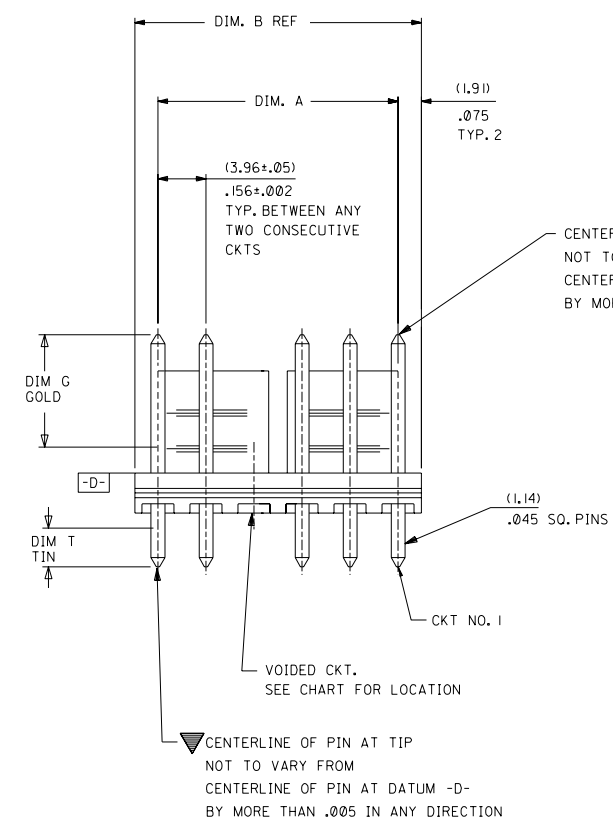
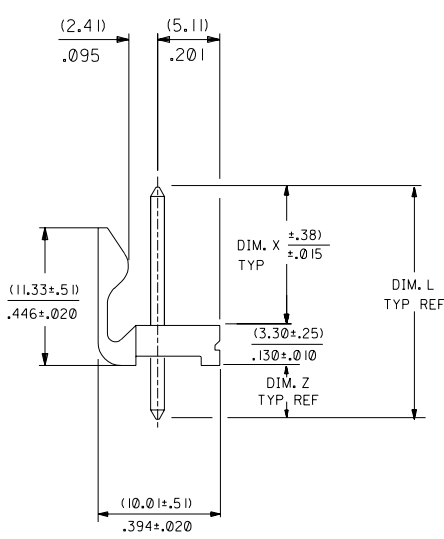


PCB LAYOUT: COMPONENT SIDE  
RECOMMENDED PCB THICKNESS  $\frac{1.67 \pm 0.18}{.062 \pm .007}$

## ORDERING INFORMATION AND DIMENSIONS

Circuits	Order No.				Dimension	
	Tin	15μ" Select Gold	30μ" Select Gold	Overall Gold	A	B
2	26-60-4020	41791-0832	41791-0849	26-61-4020	7.77 (.306)	3.96 (.156)
3	26-60-4030	41791-0833	41791-0850	26-61-4030	11.73 (.462)	7.92 (.312)
4	26-60-4040	41791-0834	41791-0851	26-61-4040	15.70 (.618)	11.89 (.468)
5	26-60-4050	41791-0835	41791-0852	26-61-4050	19.66 (.774)	15.85 (.624)
6	26-60-4060	41791-0836	41791-0853	26-61-4060	23.62 (.930)	19.81 (.780)
7	26-60-4070	41791-0837	41791-0854	26-61-4070	27.58 (1.086)	23.77 (.936)
8	26-60-4080	41791-0838	41791-0855	26-61-4080	31.55 (1.242)	27.74 (1.092)
9	26-60-4090	41791-0839	41791-0856	26-61-4090	35.51 (1.398)	31.70 (1.248)
10	26-60-4100	41791-0840	41791-0857	26-61-4100	39.47 (1.554)	35.66 (1.404)
11	26-60-4110	41791-0841	41791-0858	26-61-4110	43.43 (1.710)	39.62 (1.560)
12	26-60-4120	41791-0842	41791-0859	26-61-4120	47.40 (1.866)	43.59 (1.716)
13	26-60-4130	41791-0843	41791-0860	26-61-4130	51.36 (2.022)	47.55 (1.872)
14	26-60-4140	41791-0844	41791-0861	26-61-4140	55.32 (2.178)	51.51 (2.028)
15	26-60-4150	41791-0845	41791-0862	26-61-4150	59.28 (2.334)	55.47 (2.184)
16	26-60-4160	41791-0846	41791-0863	26-61-4160	63.25 (2.490)	59.44 (2.340)
17	26-60-4170	41791-0847	41791-0864	26-61-4170	67.21 (2.646)	63.40 (2.496)
18	26-60-4180	41791-0848	41791-0865	26-61-4180	71.17 (2.802)	67.36 (2.652)

Circuit number designation is for ordering purposes only, check corresponding circuit designation on mating connector



CENTERLINE OF PIN AT TIP  
NOT TO VARY FROM  
CENTERLINE OF PIN AT DATUM -D-  
BY MORE THAN .008 IN ANY DIRECTION

RECOMMENDED PC BOARD HOLE LAYOUT

NOTES:

- PRECEDING ENG. NO. IN CHART DESIGNATES STANDARD PRODUCT.
- SOLDERABILITY: WHEN PARTS ARE SOLDERED AT A TEMPERATURE OF 230°C (446°F) FOR 5 SECONDS, EACH SOLDERED SURFACE SHALL BE A MINIMUM OF 95% COVERED WITH A SMOOTH CONTINUOUS ADHERENT COATING. FOR OTHER INFORMATION SEE ES-152.
- PIN PUSH OUT FORCE: PRIOR TO SOLDERING, A 3 POUND MINIMUM FORCE (IN EITHER DIRECTION) SHALL BE REQUIRED TO PUSH THE PIN OUT OF THE HEADER.
- FOR ADDITIONAL INFORMATION AND TESTING PROCEDURES SEE PS-08-50.
- PARTS ARE STACKABLE END TO END ON (3.96)/.156 CENTERS.
- FOR PART WITH PEGS SEE DWG. NO. SDA-42491

MATERIAL: HEADER: GLASS FILLED POLYESTER, 94V-0, MOLDED NATURAL (WHITE).  
PIN: BRASS

PLATINGS:  
(102) ELECTRO TIN .000450/.000200 OVER .000200/.000100 COPPER  
(567) SELECT GOLD 15 M.I. MIN., SELECT TIN/LEAD 100 M.I. MIN., OVER NICKEL  
(569) SELECT GOLD 30 M.I. MIN., SELECT TIN/LEAD 100 M.I. MIN., OVER NICKEL  
FOR ADDITIONAL INFORMATION SEE SDES-88.

NO. OF CKT'S.	DIM. A	DIM. B
2	(3.96±.05) / .156±.002	(7.77) / .306
3	(7.92±.08) / .312±.003	(11.73) / .462
4	(11.89±.08) / .468±.003	(15.70) / .618
5	(15.85±.10) / .624±.004	(19.66) / .774
6	(19.81±.10) / .780±.004	(23.62) / .930
7	(23.77±.10) / .936±.004	(27.58) / 1.086
8	(27.74±.13) / 1.092±.005	(31.55) / 1.242
9	(31.70±.13) / 1.248±.005	(35.51) / 1.398
10	(35.66±.13) / 1.404±.005	(39.47) / 1.554
11	(39.62±.15) / 1.560±.006	(43.43) / 1.710
12	(43.59±.15) / 1.716±.006	(47.40) / 1.866
13	(47.55±.15) / 1.872±.006	(51.36) / 2.022
14	(51.51±.18) / 2.028±.007	(55.32) / 2.178
15	(55.47±.18) / 2.184±.007	(59.28) / 2.334
16	(59.44±.18) / 2.340±.007	(63.25) / 2.490
17	(63.40±.20) / 2.496±.008	(67.21) / 2.646
18	(67.36±.20) / 2.652±.008	(71.17) / 2.802

9	L6
8	K
7	K
6	L3
5	K
4	K
3	K
2	K
1	L6

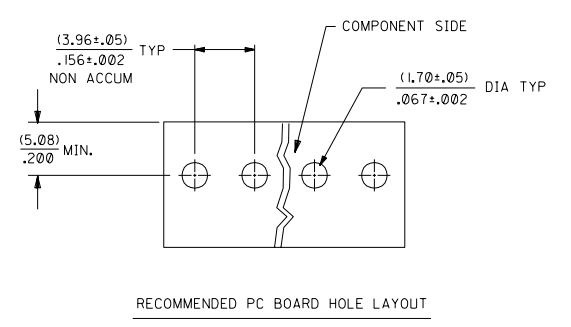
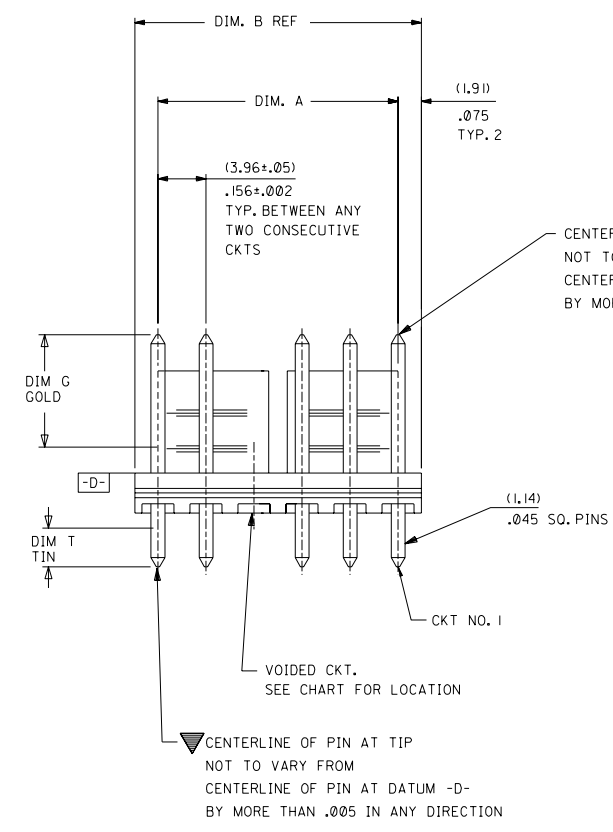
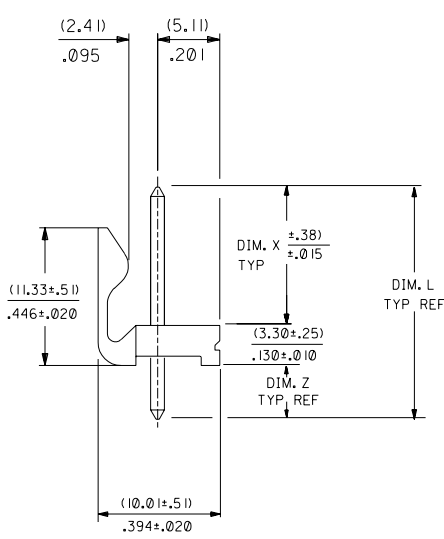
DIMENSIONS SHOWN (METRIC) INCH UNLESS OTHERWISE SPECIFIED TOLERANCES: ANGULAR ± 1/2°		▽ = 0   ▽ = 0   REVERSE ONLY ON CAD SYSTEM	
3 PLACE ±	INCH	METRIC	
2 PLACE ±			
1 PLACE ±			
DRAWING INFORMATION			
DRWG. BY: SAMIEC	CHK'D. BY: PATEL	FILE NAME: S41791X1	DRWG. NO.: SDA-41791
APP'D. BY: LENZ	SCALE: :	THIS DRAWING CONTAINS INFORMATION THAT IS PROPRIETARY TO MOLEX INC. AND SHOULD NOT BE USED WITHOUT WRITTEN PERMISSION.	
LTR.	REVISIONS	LTR.	REVISIONS

	13	12	11	10	9	8	7	6	41791	4	3	2	1
	ENG. NO.	HEADER NO.	PIN NO.	PLATING	DIM. L	DIM. X	DIM. G GOLD	DIM. Z	DIM. T TIN	NO OF CKTS	VOID CKTS	PACKAGING	
J	A-41791-0002/0018	41790-0002/0018	2161-94(102)	102	(18.29) .720	(11.43) .450	( )	(3.56 ) .140	( )	2-18		BULK PER PK-41791-001	
	A-41791-0832/0848	41790-0002/0018	43294-0209	567	(18.29) .720	(11.43) .450	(6.86 ) .270	(3.56 ) .140	(4.06 ) .160	2-18		BULK PER PK-41791-001	
	A-41791-0849/0865	41790-0002/0018	43294-0210	569	(18.29) .720	(11.43) .450	(6.86 ) .270	(3.56 ) .140	(4.06 ) .160	2-18		BULK PER PK-41791-001	
I	A- - /	- /	-		( )	( )	( )	( )	( )				
	A- - /	- /	-		( )	( )	( )	( )	( )				
	A- - /	- /	-		( )	( )	( )	( )	( )				

H													
G													
F													
E													

	A-41791-0002/0018			A-41791-0832/0848			A-41791-0849/0865								
	EDP NO.	ENG. NO.	NO OF CKTS	EDP NO.	ENG. NO.	NO OF CKTS	EDP NO.	ENG. NO.	NO OF CKTS	EDP NO.	ENG. NO.	NO OF CKTS	EDP NO.	ENG. NO.	NO OF CKTS
D	26-60-4020	A-41791-0002	2	41791-0832	A-41791-0832	2	41791-0849	A-41791-0849	2						
	26-60-4030	A-41791-0003	3	41791-0833	A-41791-0833	3	41791-0850	A-41791-0850	3						
	26-60-4040	A-41791-0004	4	41791-0834	A-41791-0834	4	41791-0851	A-41791-0851	4						
	26-60-4050	A-41791-0005	5	41791-0835	A-41791-0835	5	41791-0852	A-41791-0852	5						
	26-60-4060	A-41791-0006	6	41791-0836	A-41791-0836	6	41791-0853	A-41791-0853	6						
	26-60-4070	A-41791-0007	7	41791-0837	A-41791-0837	7	41791-0854	A-41791-0854	7						
	26-60-4080	A-41791-0008	8	41791-0838	A-41791-0838	8	41791-0855	A-41791-0855	8						
	26-60-4090	A-41791-0009	9	41791-0839	A-41791-0839	9	41791-0856	A-41791-0856	9						
C	26-60-4100	A-41791-0010	10	41791-0840	A-41791-0840	10	41791-0857	A-41791-0857	10						
	26-60-4110	A-41791-0011	11	41791-0841	A-41791-0841	11	41791-0858	A-41791-0858	11						
	26-60-4120	A-41791-0012	12	41791-0842	A-41791-0842	12	41791-0859	A-41791-0859	12						
	26-60-4130	A-41791-0013	13	41791-0843	A-41791-0843	13	41791-0860	A-41791-0860	13						
	26-60-4140	A-41791-0014	14	41791-0844	A-41791-0844	14	41791-0861	A-41791-0861	14						
	26-60-4150	A-41791-0015	15	41791-0845	A-41791-0845	15	41791-0862	A-41791-0862	15						
B	26-60-4160	A-41791-0016	16	41791-0846	A-41791-0846	16	41791-0863	A-41791-0863	16						
	26-60-4170	A-41791-0017	17	41791-0847	A-41791-0847	17	41791-0864	A-41791-0864	17						
	26-60-4180	A-41791-0018	18	41791-0848	A-41791-0848	18	41791-0865	A-41791-0865	18						

A	SEE SHEET I		SEE SHEET I		DIMENSIONS SHOWN (METRIC) INCH UNLESS OTHERWISE SPECIFIED TOLERANCES ANGULAR ± 1/2° INCH METRIC 3 PLACE ± ± 2 PLACE ± ± 1 PLACE ± ± DRAFT WHERE APPLICABLE MUST REMAIN WITHIN DIMENSIONS DRWG. BY: SAMIEC CHK'D. BY: PATEL APP'D. BY: LENZ SCALE:	TITLE FRICTION LOCK HEADER ASSY .156 @ STRT RD PINS, W/O PEG 41791 SERIES DWG MOLEX INCORPORATED U.S.A. 1151E.JLL. 60532 SHEET NO. 2 DATE 06/22/88 PART NO. SEE CHART SD A-41791 THIS DRAWING CONTAINS INFORMATION THAT IS PROPRIETARY TO MOLEX INC. AND SHOULD NOT BE USED WITHOUT WRITTEN PERMISSION. DIV. C SIZE C
	SEE SHEET I		SEE SHEET I			
	SEE SHEET I	K	SEE SHEET I			
	SEE SHEET I	F	SEE SHEET I			
	SEE SHEET I	A	SEE SHEET I			
	SEE SHEET I	5	SEE SHEET I			
	SEE SHEET I	4	SEE SHEET I		LTR. REVISIONS	LTR. REVISIONS



CENTERLINE OF PIN AT TIP  
NOT TO VARY FROM  
CENTERLINE OF PIN AT DATUM -D-  
BY MORE THAN .008 IN ANY DIRECTION

RECOMMENDED PC BOARD HOLE LAYOUT

NOTES:

- PRECEDING ENG. NO. IN CHART DESIGNATES STANDARD PRODUCT.
- SOLDERABILITY: WHEN PARTS ARE SOLDERED AT A TEMPERATURE OF 230°C (446°F) FOR 5 SECONDS, EACH SOLDERED SURFACE SHALL BE A MINIMUM OF 95% COVERED WITH A SMOOTH CONTINUOUS ADHERENT COATING. FOR OTHER INFORMATION SEE ES-152.
- PIN PUSH OUT FORCE: PRIOR TO SOLDERING, A 3 POUND MINIMUM FORCE (IN EITHER DIRECTION) SHALL BE REQUIRED TO PUSH THE PIN OUT OF THE HEADER.
- FOR ADDITIONAL INFORMATION AND TESTING PROCEDURES SEE PS-08-50.
- PARTS ARE STACKABLE END TO END ON (3.96)/.156 CENTERS.
- FOR PART WITH PEGS SEE DWG. NO. SDA-42491

MATERIAL: HEADER: GLASS FILLED POLYESTER, 94V-0, MOLDED NATURAL (WHITE).  
PIN: BRASS

PLATINGS:  
(102) ELECTRO TIN .000450/.000200 OVER .000200/.000100 COPPER  
(567) SELECT GOLD 15 M.I. MIN., SELECT TIN/LEAD 100 M.I. MIN., OVER NICKEL  
(569) SELECT GOLD 30 M.I. MIN., SELECT TIN/LEAD 100 M.I. MIN., OVER NICKEL  
FOR ADDITIONAL INFORMATION SEE SDES-88.

NO. OF CKT'S.	DIM. A	DIM. B
2	(3.96±.05) / .156±.002	(7.77) / .306
3	(7.92±.08) / .312±.003	(11.73) / .462
4	(11.89±.08) / .468±.003	(15.70) / .618
5	(15.85±.10) / .624±.004	(19.66) / .774
6	(19.81±.10) / .780±.004	(23.62) / .930
7	(23.77±.10) / .936±.004	(27.58) / 1.086
8	(27.74±.13) / 1.092±.005	(31.55) / 1.242
9	(31.70±.13) / 1.248±.005	(35.51) / 1.398
10	(35.66±.13) / 1.404±.005	(39.47) / 1.554
11	(39.62±.15) / 1.560±.006	(43.43) / 1.710
12	(43.59±.15) / 1.716±.006	(47.40) / 1.866
13	(47.55±.15) / 1.872±.006	(51.36) / 2.022
14	(51.51±.18) / 2.028±.007	(55.32) / 2.178
15	(55.47±.18) / 2.184±.007	(59.28) / 2.334
16	(59.44±.18) / 2.340±.007	(63.25) / 2.490
17	(63.40±.20) / 2.496±.008	(67.21) / 2.646
18	(67.36±.20) / 2.652±.008	(71.17) / 2.802

9	L6
8	K
7	K
6	L3
5	K
4	K
3	K
2	K
1	L6

DIMENSIONS SHOWN (METRIC) INCH UNLESS OTHERWISE SPECIFIED TOLERANCES: ANGULAR ± 1/2°		▽ = 0 ▼ = 0 REVERSE ONLY ON CAD SYSTEM	
3 PLACE ±	INCH	METRIC	
2 PLACE ±			
1 PLACE ±			
DRAWING INFORMATION			
DRWG. BY: SAMIEC	CHK'D. BY: PATEL	FILE NAME: S41791X1	DRWG. NO.: SDA-41791
APP'D. BY: LENZ	SCALE: :	THIS DRAWING CONTAINS INFORMATION THAT IS PROPRIETARY TO MOLEX INC. AND SHOULD NOT BE USED WITHOUT WRITTEN PERMISSION.	
LTR.	REVISIONS	LTR.	REVISIONS



	13	12	11	10	9	8	7	6	5	4	3	2	1											
	ENG. NO.		HEADER NO.		PIN NO.		PLATING		DIM. L		DIM. X		DIM. G GOLD		DIM. Z		DIM. T TIN		NO OF CKTS		VOID CKTS		PACKAGING	
J	A-41791-0002/0018		41790-0002/0018		2161-94(102)		102		(18.29) .720		(11.43) .450		( )		(3.56 ) .140		( )		2-18				BULK PER PK-41791-001	
	A-41791-0832/0848		41790-0002/0018		43294-0209		567		(18.29) .720		(11.43) .450		(6.86 ) .270		(3.56 ) .140		(4.06 ) .160		2-18				BULK PER PK-41791-001	
	A-41791-0849/0865		41790-0002/0018		43294-0210		569		(18.29) .720		(11.43) .450		(6.86 ) .270		(3.56 ) .140		(4.06 ) .160		2-18				BULK PER PK-41791-001	
I	A- - /		- /		-				( )		( )		( )		( )		( )							
	A- - /		- /		-				( )		( )		( )		( )		( )							
	A- - /		- /		-				( )		( )		( )		( )		( )							

H																							
G																							
F																							
E																							

A-41791-0002/0018			A-41791-0832/0848			A-41791-0849/0865											
EDP NO.	ENG. NO.	NO OF CKTS	EDP NO.	ENG. NO.	NO OF CKTS	EDP NO.	ENG. NO.	NO OF CKTS	EDP NO.	ENG. NO.	NO OF CKTS	EDP NO.	ENG. NO.	NO OF CKTS	EDP NO.	ENG. NO.	NO OF CKTS
26-60-4020	A-41791-0002	2	41791-0832	A-41791-0832	2	41791-0849	A-41791-0849	2									2
26-60-4030	A-41791-0003	3	41791-0833	A-41791-0833	3	41791-0850	A-41791-0850	3									3
26-60-4040	A-41791-0004	4	41791-0834	A-41791-0834	4	41791-0851	A-41791-0851	4									4
26-60-4050	A-41791-0005	5	41791-0835	A-41791-0835	5	41791-0852	A-41791-0852	5									5
26-60-4060	A-41791-0006	6	41791-0836	A-41791-0836	6	41791-0853	A-41791-0853	6									6
26-60-4070	A-41791-0007	7	41791-0837	A-41791-0837	7	41791-0854	A-41791-0854	7									7
26-60-4080	A-41791-0008	8	41791-0838	A-41791-0838	8	41791-0855	A-41791-0855	8									8
26-60-4090	A-41791-0009	9	41791-0839	A-41791-0839	9	41791-0856	A-41791-0856	9									9
26-60-4100	A-41791-0010	10	41791-0840	A-41791-0840	10	41791-0857	A-41791-0857	10									10
26-60-4110	A-41791-0011	11	41791-0841	A-41791-0841	11	41791-0858	A-41791-0858	11									11
26-60-4120	A-41791-0012	12	41791-0842	A-41791-0842	12	41791-0859	A-41791-0859	12									12
26-60-4130	A-41791-0013	13	41791-0843	A-41791-0843	13	41791-0860	A-41791-0860	13									13
26-60-4140	A-41791-0014	14	41791-0844	A-41791-0844	14	41791-0861	A-41791-0861	14									14
26-60-4150	A-41791-0015	15	41791-0845	A-41791-0845	15	41791-0862	A-41791-0862	15									15
26-60-4160	A-41791-0016	16	41791-0846	A-41791-0846	16	41791-0863	A-41791-0863	16									16
26-60-4170	A-41791-0017	17	41791-0847	A-41791-0847	17	41791-0864	A-41791-0864	17									17
26-60-4180	A-41791-0018	18	41791-0848	A-41791-0848	18	41791-0865	A-41791-0865	18									18

SEE SHEET I		SEE SHEET I		DIMENSIONS SHOWN (METRIC) INCH		▽ = 0		▽ = 0		REVISE ONLY ON CAD SYSTEM	
SEE SHEET I		SEE SHEET I		UNLESS OTHERWISE SPECIFIED TOLERANCES ANGULAR ± 1/2°		TITLE		FRICITION LOCK HEADER ASSY		SHEET NO. 2	
SEE SHEET I		SEE SHEET I		INCH METRIC		DATE		06/22/88		DATE	
SEE SHEET I		SEE SHEET I		3 PLACE ±		PART NO.		SEE CHART		SD A-41791	
SEE SHEET I		SEE SHEET I		2 PLACE ±		MOLEX INCORPORATED		L1SLEJLL		60532	
SEE SHEET I		SEE SHEET I		1 PLACE ±		DRAWN BY		SAMI EC		CHK'D BY PATEL	
SEE SHEET I		SEE SHEET I		DRAFT WHERE APPLICABLE MUST REMAIN WITHIN DIMENSIONS		SCALE		LENZ		SCALE :	
SEE SHEET I		SEE SHEET I		LTR.		REVISIONS		LTR.		REVISIONS	

13	12	11	10	9	8	7	6	5	4	3	2	1
----	----	----	----	---	---	---	---	---	---	---	---	---