

**PLEASE CHECK WWW.MOLEX.COM FOR LATEST PART INFORMATION**

**Part Number:** [0685610016](#)  
**Status:** **Active**  
**Overview:** serial\_ata\_products  
**Description:** 1.27mm (.050") Pitch Serial ATA Straight Latching-to-Right Angle Latching Signal Cable Assembly, 0.50m (1.64' ) Length, Red, Leadfree

**Documents:**

[Drawing \(PDF\)](#) [RoHS Certificate of Compliance \(PDF\)](#)

**General**

Product Family	Cable Assemblies
Series	<a href="#">68561</a>
Comments	Generation 2 (300MB/s)
Connector to Connector	Serial ATA-to-Serial ATA
Overview	<a href="#">serial_ata_products</a>
Product Name	Serial ATA

**Physical**

Cable Length	0.50m (1.64' )
Circuits (Loaded)	7
Color - Resin	Black, Natural
Gender	Female-Female
Lock to Mating Part	Yes
Material - Metal	Stainless Steel
Material - Resin	Low Density Polyethylene, Polyester
Packaging Type	Bag
Pitch - Mating Interface (in)	0.050 In
Pitch - Mating Interface (mm)	1.27 mm
Single Ended	No
Termination Interface: Style	Surface Mount
Wire Insulation Diameter	N/A
Wire Size AWG	26
Wire/Cable Type	PVC

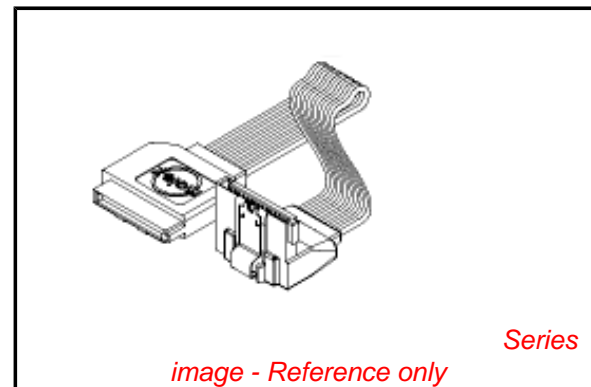
**Electrical**

Current - Maximum per Contact	1.5A
Impedance	100 ohms
Shielded	Yes
Voltage - Maximum	40V

**Material Info**

**Reference - Drawing Numbers**

Sales Drawing [SD-68561-0016](#), [SD-68561-002](#)



**EU RoHS**

**ELV and RoHS  
Compliant**  
**REACH SVHC**  
 Not Reviewed  
**Halogen-Free  
Status**  
**Not Reviewed**

**China RoHS**



**Need more information on product  
environmental compliance?**

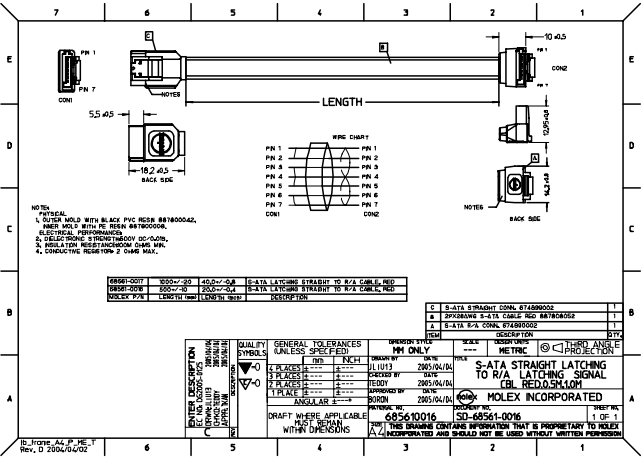
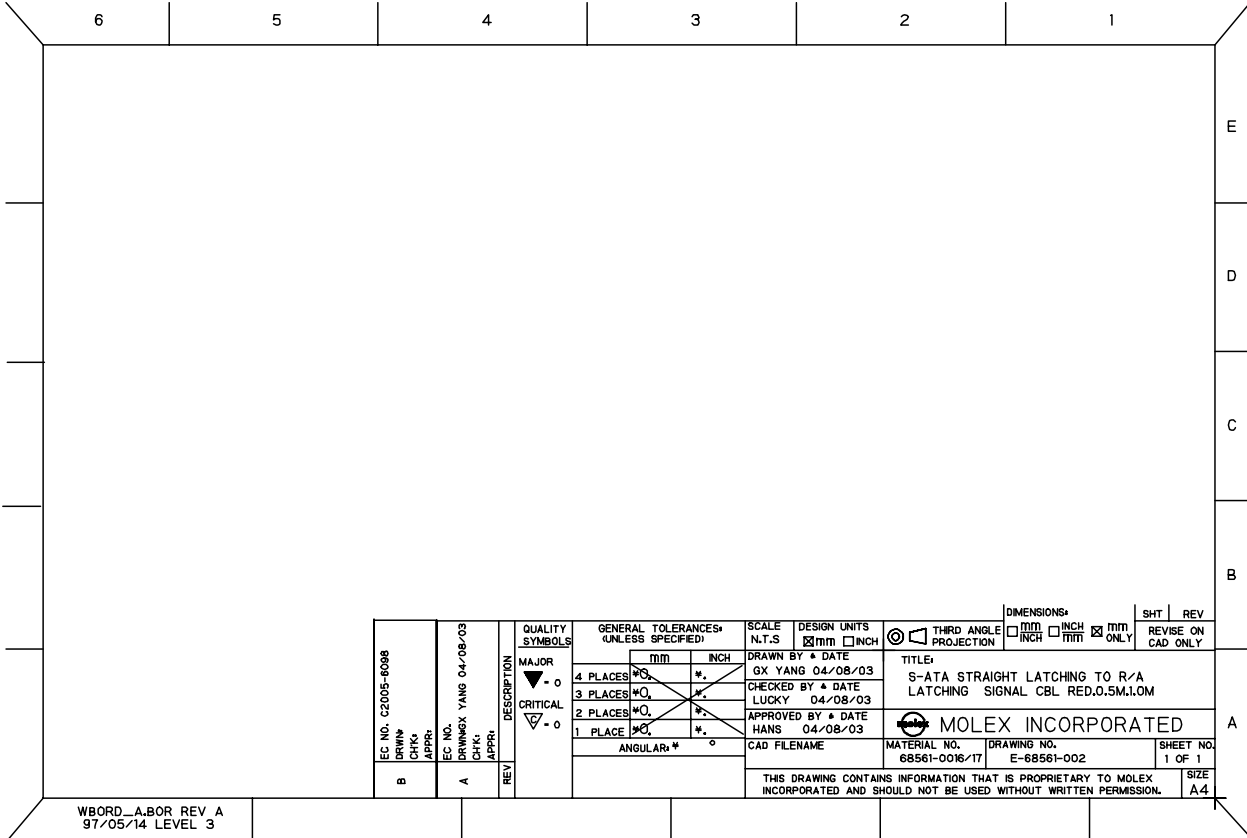
Email [productcompliance@molex.com](mailto:productcompliance@molex.com)  
 For a multiple part number RoHS Certificate of Compliance, [click here](#)

Please visit the [Contact Us](#) section for any non-product compliance questions.

**Search Parts in this Series**  
[68561Series](#)

6 5 4 3 2 1

E  
D  
C  
B  
A

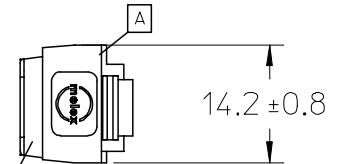
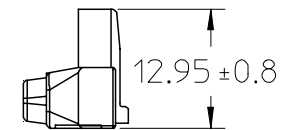
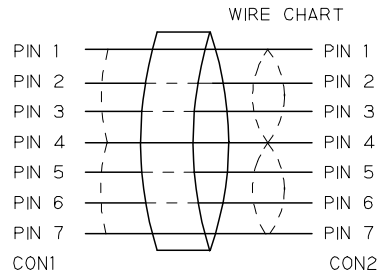
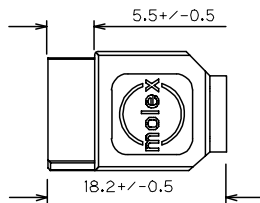
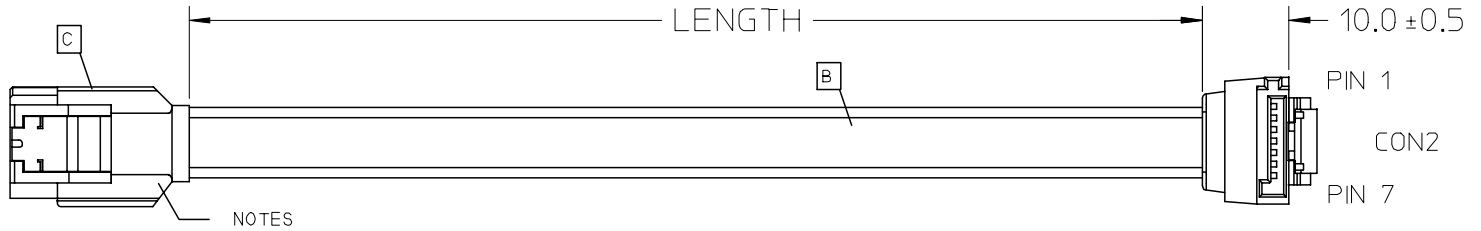
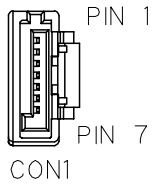


EC NO. C22005-0098 DRAWN: [blank] CHKD: [blank] APPR: [blank]	EC NO. C22005-0098 DRAWING: YANG 04/08/03 CHKD: [blank] APPR: [blank]	QUALITY SYMBOLS	GENERAL TOLERANCES* (UNLESS SPECIFIED)	SCALE N.T.S	DESIGN UNITS	THIRD ANGLE PROJECTION	DIMENSIONS	SHT	REV		
		MAJOR ▽ = 0 CRITICAL ∇ = 0	mm INCH 4 PLACES PO * 3 PLACES NO * 2 PLACES MO * 1 PLACE LO *	DRAWN BY * DATE GX YANG 04/08/03 CHECKED BY * DATE LUCKY 04/08/03 APPROVED BY * DATE HANS 04/08/03	mm INCH <input checked="" type="checkbox"/> mm <input type="checkbox"/> INCH	<input type="checkbox"/> THIRD ANGLE PROJECTION <input type="checkbox"/> FIRST ANGLE PROJECTION	mm INCH <input checked="" type="checkbox"/> mm <input type="checkbox"/> INCH				
			ANGULAR: * °	CAD FILENAME	TITLE: S-ATA STRAIGHT LATCHING TO R/A LATCHING SIGNAL CBL RED.0.5M.1.0M		MATERIAL NO. 68561-0016/17		DRAWING NO. E-68561-002	SHEET NO. 1 OF 1	SIZE A4
THIS DRAWING CONTAINS INFORMATION THAT IS PROPRIETARY TO MOLEX INCORPORATED AND SHOULD NOT BE USED WITHOUT WRITTEN PERMISSION.											

WBORD\_A.BOR REV A  
97/05/14 LEVEL 3

TO: HONG KONG, CHINA  
Rev. 0 2004/6/02

7 6 5 4 3 2 1



NOTE:  
PHYSICAL

1. OUTER MOLD WITH BLACK PVC RESIN 887800042

ELECTRICAL PERFORMANCE:

- 2. DIELECTRONIC STRENGTH: 500V DC
- 3. INSULATION RESISTANCE: 100M OHMS
- 4. CONDUCTIVE RESISTOR: 2 OHMS

MOLEX P/N	LENGTH (mm)	LENGTH (inch)	DESCRIPTION
68561-0017	1000+/-20	40.0+/-0.8	S-ATA LATCHING STRAIGHT TO R/A CABLE. RED
68561-0016	500+/-10	20.0+/-0.4	S-ATA LATCHING STRAIGHT TO R/A CABLE. RED

ITEM	DESCRIPTION	L	QTY.
C	S-ATA STRAIGHT CONN. 674899002		1
B	2PX26AWG S-ATA CABLE RED 887808052	N/A	1
A	S-ATA R/A CONN. 674890002		1

ENTER DESCRIPTION EC NO: DG2005-0009 DRWN: GXYANG CHKD: APPR: BOCHEN	2004/08/11 2004/08/18 2004/08/18	QUALITY SYMBOLS ▽=0 ◻=0	GENERAL TOLERANCES (UNLESS SPECIFIED)		DIMENSION STYLE MM ONLY		SCALE ---	DESIGN UNITS METRIC	THIRD ANGLE PROJECTION			
				mm	INCH	DRAWN BY GX YANG	DATE 04/08/10	TITLE S-ATA STRAIGHT LATCHING TO R/A LATCHING SIGNAL CBL RED, 0.5M, 1.0M				
			4 PLACES	±---	±---	CHECKED BY TEDDY	DATE 04/08/10					
			3 PLACES	±---	±---	APPROVED BY BORON	DATE 04/08/10	MOLEX INCORPORATED DOCUMENT NO. SD-68561-002 SHEET NO. 1 OF 1				
2 PLACES	±---	±---	MATERIAL NO. 685610016/7									
1 PLACE	±---	±---	DRAFT WHERE APPLICABLE MUST REMAIN WITHIN DIMENSIONS		THIS DRAWING CONTAINS INFORMATION THAT IS PROPRIETARY TO MOLEX INCORPORATED AND SHOULD NOT BE USED WITHOUT WRITTEN PERMISSION							
ANGULAR ±---°												

6 5 4 3 2 1