

PLEASE CHECK WWW.MOLEX.COM FOR LATEST PART INFORMATION

Part Number: [0736231001](#)
Status: **Active**
Description: 1.91mm (.075") Pitch Quick Twist/Retarded Pin Plug Insert Mold for EVC Cable, 10 Circuit

Documents:

[3D Model](#)
[Drawing \(PDF\)](#)

[RoHS Certificate of Compliance \(PDF\)](#)

General

Product Family	I/O Connectors
Series	73623
Application	N/A
Component Type	Plug
Product Name	N/A
Type	N/A

Physical

Circuits (Loaded)	10
Lock to Mating Part	No
Material - Metal	Copper Alloy
Material - Plating Mating	Gold over Nickel
Material - Plating Termination	Tin
Number of Rows	1
Orientation	Straight
Packaging Type	Tray
Panel Mount	No
Pitch - Mating Interface (in)	0.075 In
Pitch - Mating Interface (mm)	1.91 mm
Polarized to Mating Part	Yes
Termination Interface: Style	Crimp or Compression

Electrical

Current - Maximum per Contact	Contact Molex
-------------------------------	---------------

Material Info

Reference - Drawing Numbers

Sales Drawing	SDA-73623-1***
---------------	----------------

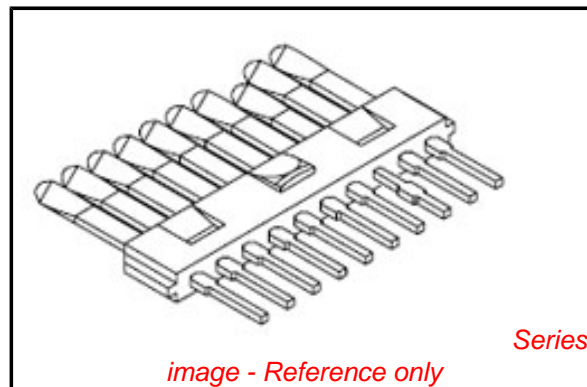


image - Reference only

EU RoHS

**ELV and RoHS
Compliant**
**REACH SVHC
Contains SVHC: No**
**Halogen-Free
Status**

China RoHS



**Need more information on product
environmental compliance?**

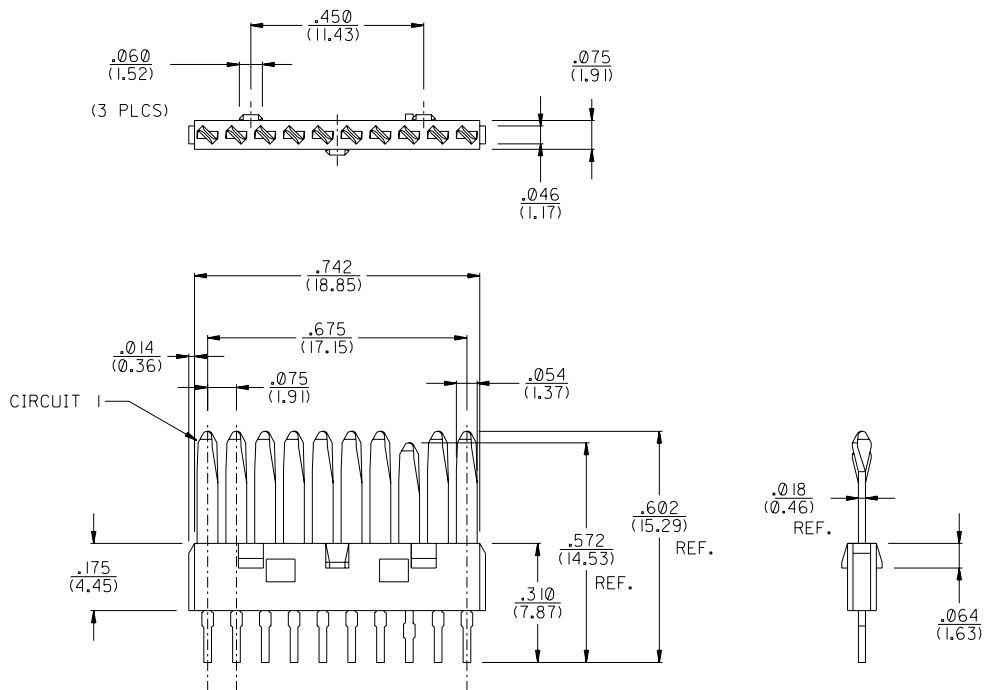
Email productcompliance@molex.com
 For a multiple part number RoHS Certificate of Compliance, [click here](#)

Please visit the [Contact Us](#) section for any non-product compliance questions.

Search Parts in this Series

[73623Series](#)

PART NUMBER 73623-1001 SHOWN
(WITH TAIL CUT)

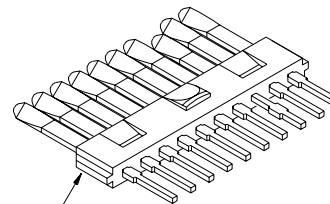
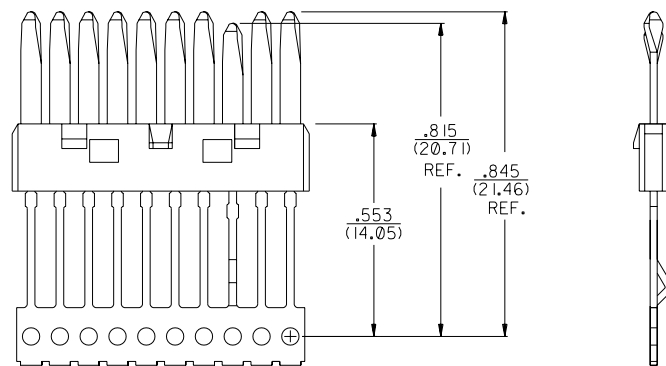


NOTE FOR LEAD FREE CONVERSION:
THE PRIMARY SHIPPING CARTON WILL BE
LABELED "COMPLIANT TO ROHS DIRECTIVE
2002/95/EC AND ELV ANNEX II OF
DIRECTIVE 2000/53/EC". CARTONS
WITHOUT THIS LABEL MAY CONTAIN
PRODUCT WITH LEAD.

NOTES:

- INSULATOR MATERIAL: GLASS FILLED POLYMER, UL 94V-0, COLOR BLACK.
- CONTACT MATERIAL: COPPER ALLOY.
- PLATING: CONTACT AREA - .000030/(0.00076) MINIMUM SELECT GOLD OVER NICKEL UNDERPLATE OVERALL.
P.C. TAILS - .000100/(0.00254) MINIMUM SELECT TIN OVER NICKEL UNDERPLATE OVERALL.
- PARTS ARE PACKAGED IN TRAYS PER PK-70873-0618.
- REFER TO APPLICATION SPECIFICATION PS-71754-9999 FOR ASSEMBLY AND TERMINATION DETAILS.
- PRODUCT CONFORMS TO PRODUCT SPECIFICATION PS-71182.

PART NUMBER 73623-1000
(WITH CARRIER)



PART NUMBER	DESCRIPTION
73623-1000	WITH CARRIER
73623-1001	WITH TAIL CUT

D	LEADFREE ECN# UCF2004-0285 DMORGAN 04/04/27
C	ADDED P/N -1000 PER EC # U81427 SCARTH 97/01/05
B	REV. TAIL LENGTH PER EC # U70490 SCARTH 97/03/05
A	RELEASE DRAWING ECR U70150 MURPHY 96/09/19

DIMENSIONS SHOWN (METRIC) INCH		UNLESS OTHERWISE SPECIFIED TOLERANCES: ANGULAR ± 1/2°		REVISE ONLY ON CAD SYSTEM	
INCH	METRIC	INCH	METRIC	FILE NAME	DRWG. NO.
3 PLACE ± .005	---	3 PLACE ± .005	---	10 CKT. .075" PITCH QUICK TWIST/RETARDED PIN PLUG INSERT MOLD FOR EVC CABLE	SDA-73623-1***
2 PLACE ± .01	± 0.13	2 PLACE ± .01	± 0.13	MOLEX INCORPORATED	U.S.A.
1 PLACE ---	± 0.25	1 PLACE ---	± 0.25	MOLEX INC. AND SHOULD NOT BE USED WITHOUT WRITTEN PERMISSION	CD
DRWG. BY PAM	CHK'D. BY	APPR'D. BY	SCALE 4 : 1	THIS DRAWING CONTAINS INFORMATION THAT IS PROPRIETARY TO MOLEX INC. AND SHOULD NOT BE USED WITHOUT WRITTEN PERMISSION	SIZE