

# Customer Information Sheet

DRAWING No.: S1721-XX

SHEET 2 OF 2

IF IN DOUBT - ASK

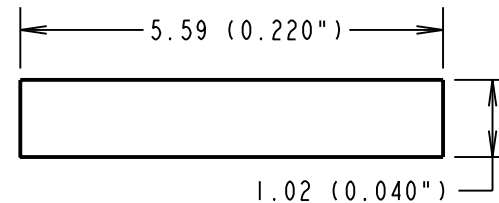
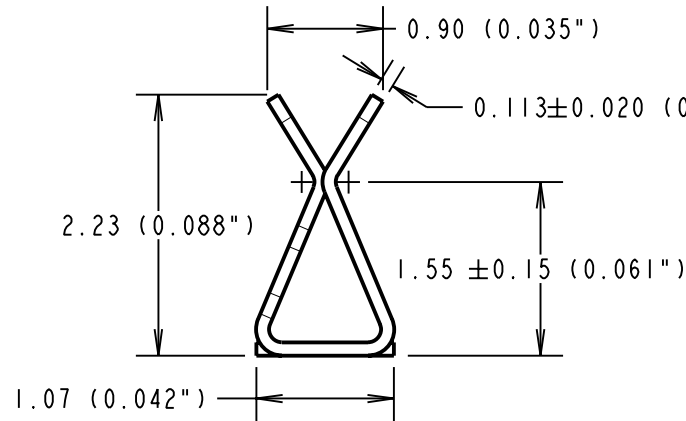
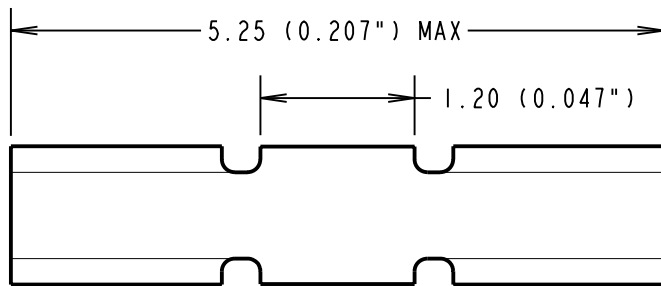
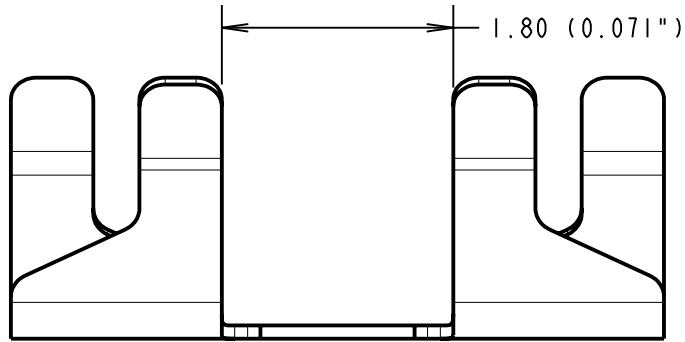
©

NOT TO SCALE

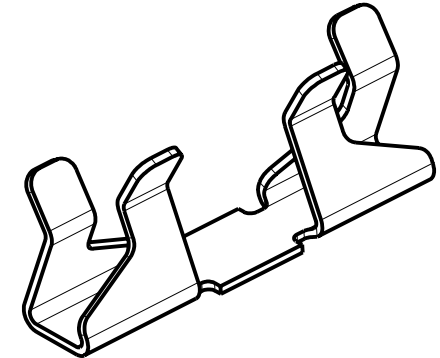
THIRD ANGLE PROJECTION

ALL DIMENSIONS IN mm

INCHES CONVERSION IN ( )



RECOMMENDED PAD LAYOUT



0.113 ± 0.020 (0.0044") MATERIAL THICKNESS AFTER PLATING

PART No.	FINISH:
S1721-06	90/10 TIN/LEAD
S1721-46	100% TIN

**NOTES:**

- FOR TAPE AND REELED VERSION, SEE DRAWING S1721-06R.
- PACKING: - 100 COMPONENTS PER BAG  
NB: COMPONENTS SUPPLIED IN TAPE POCKETS TO AVOID DAMAGE DURING STORAGE AND TRANSIT.

COMPONENT SPECIFICATION:  
 MATERIAL = BERYLLIUM COPPER  
 FINISH = '06' = 3µ 90/10 TIN/LEAD  
 '46' = 3µ 100% TIN,  
 OVER 2.0µ NICKEL  
 SHIELD THICKNESS = 0.13-0.23mm

PERFORMANCE SPECIFICATION:  
 ENGAGEMENT FORCE = 5N MAX.  
 DISENGAGEMENT FORCE = 0.35N MIN.  
 DURABILITY = 15 ACTUATIONS MIN.  
 CONTACT RESISTANCE = 40mΩ MAX.

RA	4	05.07.10	10860
NAME	ISS.	DATE	C/NOTE
APPROVED:		R. ADDE	
CHECKED:		M.G. PLESTED	
DRAWN:		J. ENRIGHT	
CUSTOMER REF.:			
ASSEMBLY DRG:			

**HARWIN**

HARWIN USA TEL: 603 893 5376 FAX: 603 893 5396 mis@harwin.com	HARWIN Europe (UK) TEL: 023 9231 4545 FAX: 023 9231 4590 mis@harwin.co.uk	HARWIN Asia TEL: +65 6 779 4909 FAX: +65 6 779 3868 mis@harwin.com.sg
--	--	--

THIS DRAWING AND ANY INFORMATION OR DESCRIPTIVE MATTER SET OUT HEREON ARE CONFIDENTIAL AND COPYRIGHT PROPERTY OF THE HARWIN GROUP AND MUST NOT BE DISCLOSED, LOANED, COPIED OR USED FOR MANUFACTURING, TENDERING OR FOR ANY OTHER PURPOSE WITHOUT THEIR WRITTEN PERMISSION.

TOLERANCES  
 X. = ±1mm  
 X.X = ±0.25mm  
 X.XX = ±0.10mm  
 X.XXX = ±0.01mm  
 ANGLES = ±5°  
 UNLESS STATED

MATERIAL: SEE ABOVE  
 FINISH: SEE ABOVE  
 S/AREA: mm<sup>2</sup>

TITLE: MINI SMT RFI SHIELD CLIP (LOOSE)  
 DRAWING NUMBER: S1721-XX  
 SHT 2 OF 2