

Customer Information Sheet

DRAWING No.: M50-360XX42

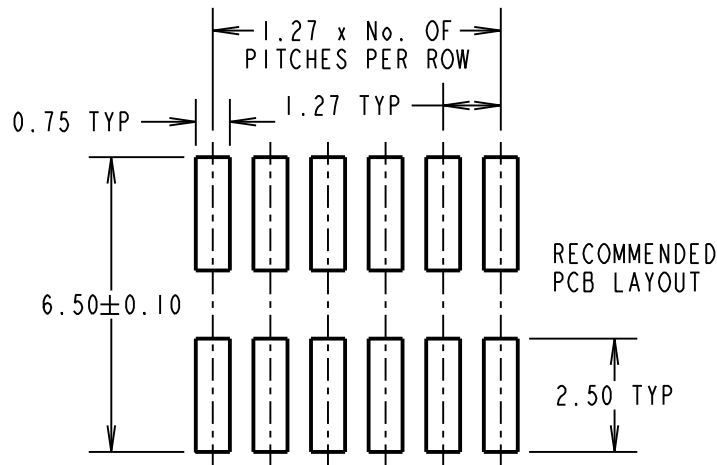
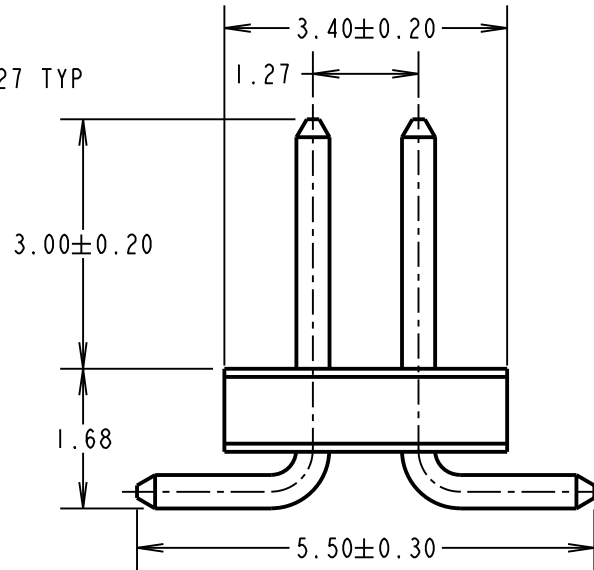
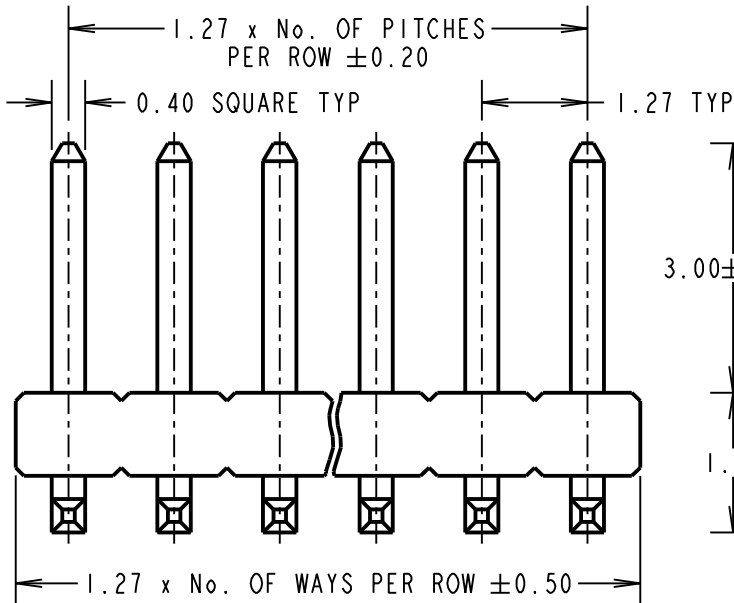
IF IN DOUBT - ASK

Ⓒ

NOT TO SCALE

THIRD ANGLE PROJECTION

ALL DIMENSIONS IN mm



SPECIFICATIONS:

MATERIAL:

MOULDING = HIGH TEMP THERMOPLASTIC UL94V-0

CONTACTS = BRASS

FINISH:

CONTACTS = 0.15 - 0.08 μ GOLD ON CONTACT AREA,
2.5 - 3.0 μ 100% TIN OVER 0.7 - 1.3 μ
NICKEL ON TAILS

ELECTRICAL:

CURRENT RATING (ALL CONTACTS ARE

ELECTRICALLY LOADED) = 1A

CONTACT RESISTANCE = 30m Ω MAX

INSULATION RESISTANCE = 5000M Ω MIN

DIELECTRIC WITHSTANDING = 600V AC MIN

MECHANICAL:

PIN RETENTION = 4.4N NOMINAL

SOLDERABILITY = 250 $^{\circ}$ C FOR 3 TO 5 SECONDS

DURABILITY = 600 CYCLES

ENVIRONMENTAL:

TEMPERATURE RANGE = -40 $^{\circ}$ C TO +105 $^{\circ}$ C

PACKING:

BOX

FOR COMPLETE SPECIFICATION, SEE COMPONENT SPECIFICATION C029XX (LATEST ISSUE)

ORDER CODE:

M50-360XX42

No. OF WAYS PER ROW

01 TO 50

FINISH:

42 = SELECTIVE GOLD
+ 100% TIN OVER NICKEL

SB	14	29.03.12	11696
NAME	ISS.	DATE	C/NOTE
APPROVED:		S. BENNETT	
CHECKED:		S. FLOWER	
DRAWN:		J. KIER	
CUSTOMER REF.:			
ASSEMBLY DRG:			

NOTES:

1. ALL TOLERANCES ARE ± 0.15 UNLESS OTHERWISE STATED.

HARWIN

www.harwin.com
technical@harwin.com

THIS DRAWING AND ANY INFORMATION OR DESCRIPTIVE MATTER SET OUT HEREON ARE CONFIDENTIAL AND COPYRIGHT PROPERTY OF THE HARWIN GROUP AND MUST NOT BE DISCLOSED, LOANED, COPIED OR USED FOR MANUFACTURING, TENDERING OR FOR ANY OTHER PURPOSE WITHOUT THEIR WRITTEN PERMISSION.

TOLERANCES

X = ± 1 mm
X.X = ± 0.25 mm
X.XX = ± 0.10 mm
X.XXX = ± 0.01 mm
ANGLES = $\pm 5^{\circ}$
UNLESS STATED

MATERIAL:

SEE ABOVE

FINISH:

SEE ABOVE

S/AREA:

mm²

TITLE:

1.27mm PITCH DIL VERTICAL SMT PIN HEADER

DRAWING NUMBER:

M50-360XX42

SHT

2 OF 2