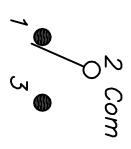
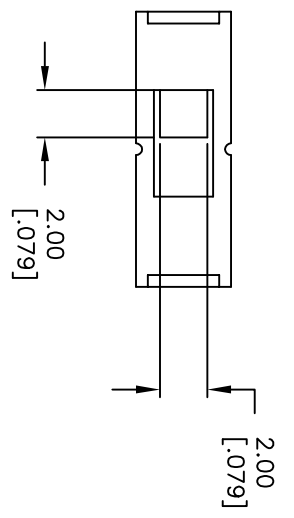


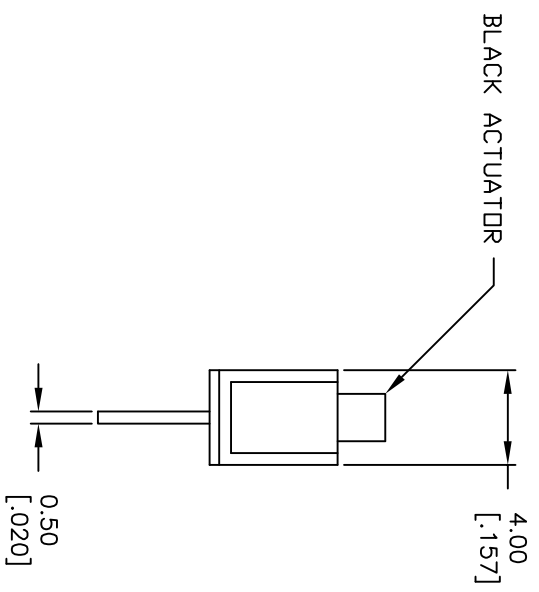
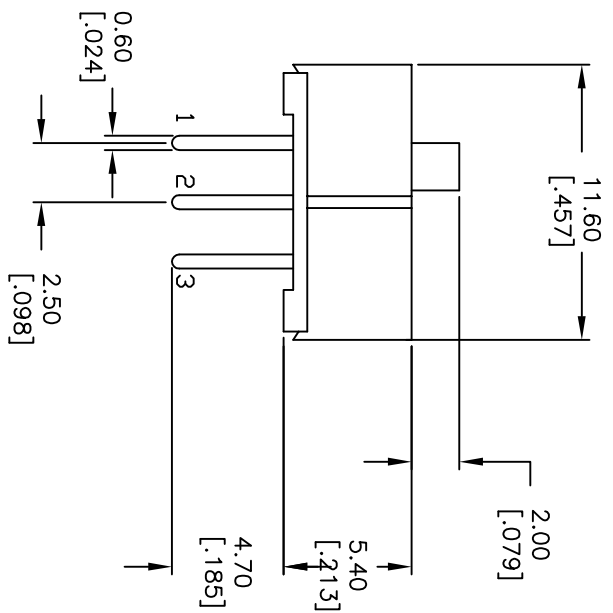
RECOMMENDED P.C.B. LAYOUT
NOT TO SCALE



CIRCUIT: SPDT
TIMING: NON SHORTING

NOTES:

1. ALL DIMENSIONS IN MM [INCH]
2. GENERAL TOLERANCE: X.X=±0.4
X.XX=±0.25
3. TERM. NOS. FOR REFERENCE ONLY.
4. ELECTRICAL RATING: 0.2A @30VDC
5. CONTACT MATERIAL: Copper Alloy W/Silver Plating
6. OPERATING FORCE: 250±100gf
7. TRAVEL: 2.5mm
8. CONTACT RESISTANCE: 50MILLI-OHMS Max.
9. DIELECTRIC STRENGTH: 500V RMS@ SEA LEVEL.
10. INSULATION RESISTANCE: 100Mega-OHMS Min.
11. OPERATING TEMP.: -20°C to 70°C



BLACK ACTUATOR



C	17823	ADDED TERMINAL LENGTH DIM.	10/30/07	BF
B	11770	REVISED AND REDRAWN	10/22/01	CJB
REV.	ECN NO.	DESCRIPTION	DATE	CHKD

TITLE		EG1218		DR	BF	DWG	P040040	REV	C
SCALE	3:1	DATE	10/30/07						

THE INFORMATION CONTAINED IN THIS DOCUMENT IS PROPRIETARY TO E-SWITCH AND IS NOT TO BE COPIED OR TRANSFERRED