

TITLE

TRANSMIT TRANSFORMER,
CEPT 75/120 •

SCHOTT
CORPORATION

1000 PARKERS LAKE ROAD
WAYZATA, MN 55391
(952) 475-1173

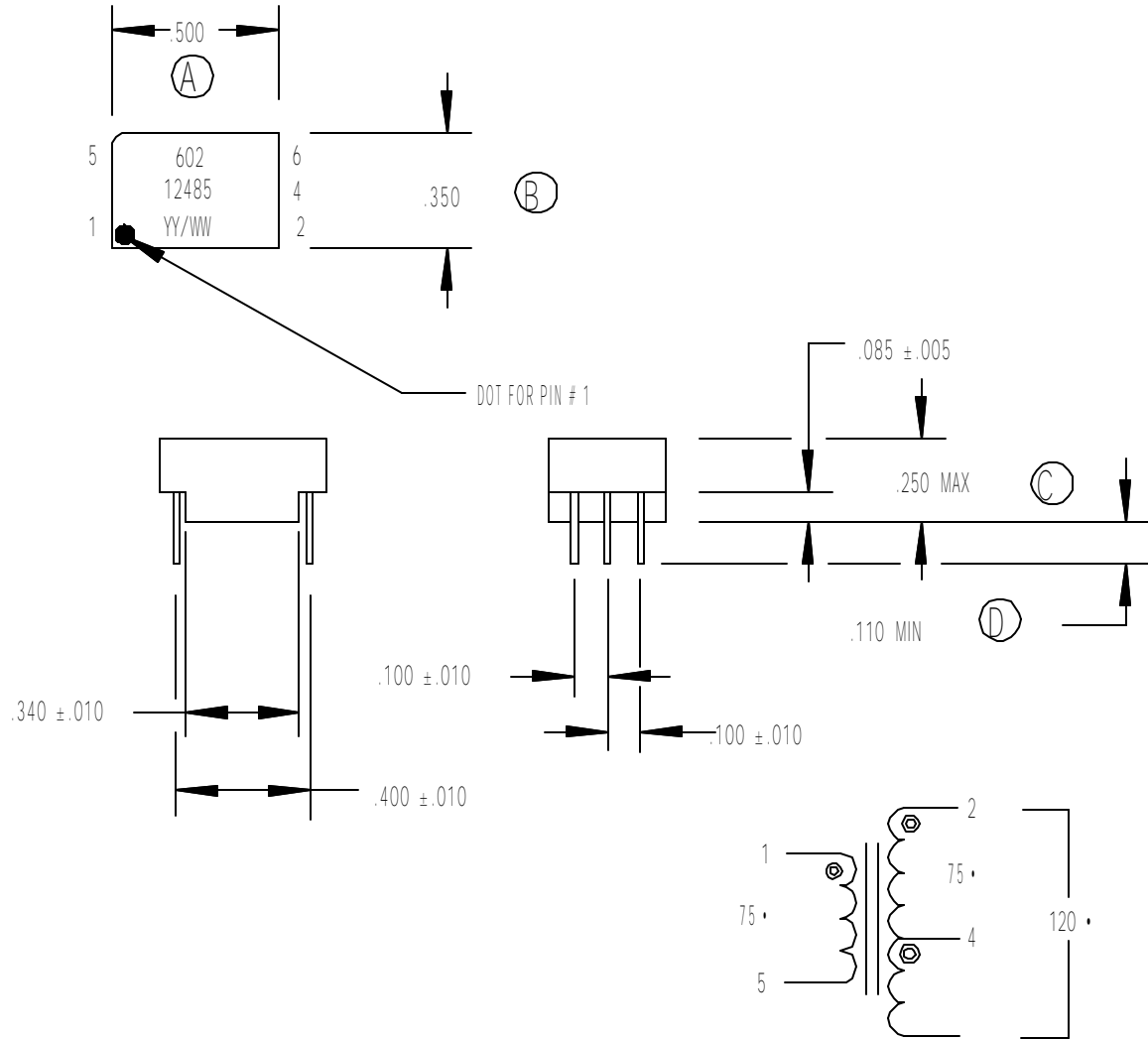
PART NUMBER
22634

REV L PAGE 1 END

SPECIFICATIONS

1. TEMPERATURE CLASS: 105° C
2. INDUCTANCE:
(1 - 5) @ 100 KHz, 1 V =
1.5 m Hy MIN.
3. LEAKAGE INDUCTANCE:
(1 - 5) @ 300 KHz, 1v, (2 - 4 - 6)
SHORTED = 0.3 μ Hy MAX.
4. INTERWINDING CAPACITANCE:
(1 - 5) TO (2 - 4 - 6) @ 300 KHz = 35 pf MAX.
5. TURNS RATIO:
(1 - 5) : (2 - 4) : (2 - 6) = 1 : 1 : 1.25
6. DC RESISTANCE:
(1 - 5) = 0.5 • NOM.
(2 - 6) = 0.6 • NOM.
7. HI-POT: 1500 VAC.

THIS TRANSFORMER TO OPERATE WITH
CRYSTAL CS61574/35 TRANSMIT IN
CEPT APPLICATIONS WITH 75 OR
120 • CABLE IMPEDANCE.



CUSTOMER APPROVAL REQUIRED FOR ANY FORM, FIT OR FUNCTION CHANGES

TOLERANCES UNLESS OTHERWISE NOTED	2 PLACE	3 PLACE	ANGLE
	+ .01	+ .005	+ 1°