



Frontier Electronics Corp.

667 E. COCHRAN STREET, SIMI VALLEY, CA 93065

TEL: (805) 522-9998 FAX: (805) 522-9989

E-mail: frontiersales@frontierusa.com

Web: <http://www.frontierusa.com>

6A GENERAL PURPOSE PLASTIC RECTIFIER

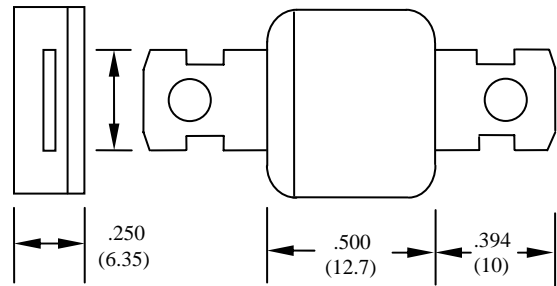
GT60-005 THRU GT60-10

FEATURES

- UL 94V0 FLAME RETARDANT EPOXY MOLDING COMPOUND
- DIFFUSED JUNCTION
- LOW COST
- HIGH SURGE CURRENT CAPABILITY

MECHANICAL DATA

- CASE: TRANSFER MOLDED, GT, DIMENSIONS IN INCHES AND (MILLIMETERS)
- TERMINALS: PLATED 0.25"(6.35mm) FAST-ON TERMINALS
- POLARITY: CATHODE INDICATED BY COLOR BAND
- WEIGHT: 3.37 GRAMS



MAXIMUM RATINGS AND ELECTRICAL CHARACTERISTICS RATINGS AT 25°C AMBIENT TEMPERATURE UNLESS OTHERWISE SPECIFIED SINGLE PHASE, HALF WAVE, 60 HZ, RESISTIVE OR INDUCTIVE LOAD. FOR CAPACITIVE LOAD, DERATE CURRENT BY 20%

RATINGS	SYMBOL	GT60-005	GT60-01	GT60-02	GT60-04	GT60-06	GT60-10	UNITS
MAXIMUM RECURRENT PEAK REVERSE VOLTAGE	V_{RRM}	50	100	200	400	600	1000	V
MAXIMUM RMS VOLTAGE	V_{RMS}	35	70	140	280	420	700	V
MAXIMUM DC BLOCKING VOLTAGE	V_{DC}	50	100	200	400	600	1000	V
MAXIMUM AVERAGE FORWARD RECTIFIED CURRENT @TA60°C @TL60°C	I_o	6.0 22.0						A
PEAK FORWARD SURGE CURRENT, 8.3ms SINGLE HALF SINE-WAVE SUPERIMPOSED ON RATED LOAD	I_{FSM}	400						A
TYPICAL JUNCTION CAPACITANCE (NOTE 1)	C_j	150						PF
TYPICAL THERMAL RESISTANCE (NOTE 2)	$R_{\theta ja}$	10						°C/W
STORAGE TEMPERATURE RANGE	T_{STG}	- 55 TO + 150						°C
OPERATING TEMPERATURE RANGE	T_{OP}	- 55 TO + 150						°C

ELECTRICAL CHARACTERISTICS (A_T T_A =25°C UNLESS OTHERWISE NOTED)

CHARACTERISTICS	SYMBOL	GT60-005	GT60-01	GT60-02	GT60-04	GT60-06	GT60-10	UNITS
MAXIMUM FORWARD VOLTAGE AT I_o DC	V_F	1.0						V
MAXIMUM REVERSE CURRENT AT 25°C	I_R	5						μA
MAXIMUM REVERSE CURRENT AT 100°C	I_R	50						μA

- NOTE:
1. MEASURED AT 1MHZ AND APPLIED REVERSE VOLTAGE OF 4.0 VOLTS
 2. BOTH LEADS ATTACHED TO HEAT SINK 70*70*1t(mm) COPPER PLATE AT LEAD LENGTH 5mm

RATINGS AND CHARACTERISTIC CURVES GT60-005 THRU GT60-10

FIG. 1 - FORWARD DERATING CURVE

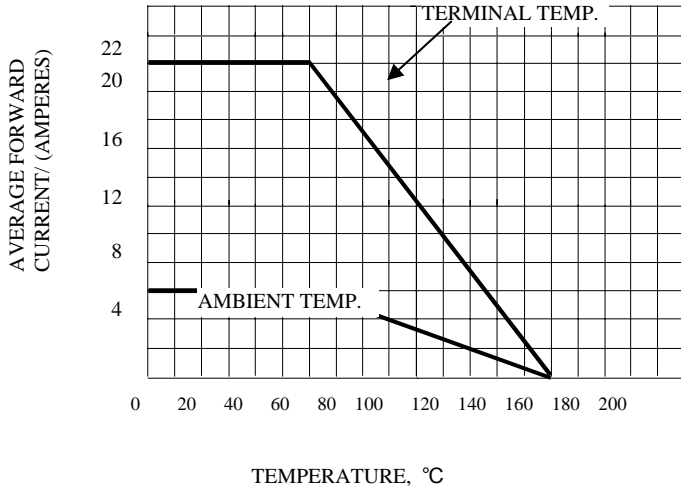


FIG. 2 - TYPICAL FORWARD CHARACTERISTIC

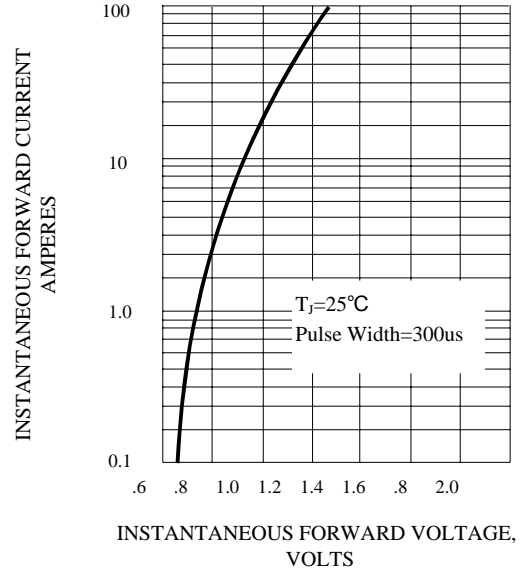


FIG. 3 - PEAK FORWARD SURGE CURRENT

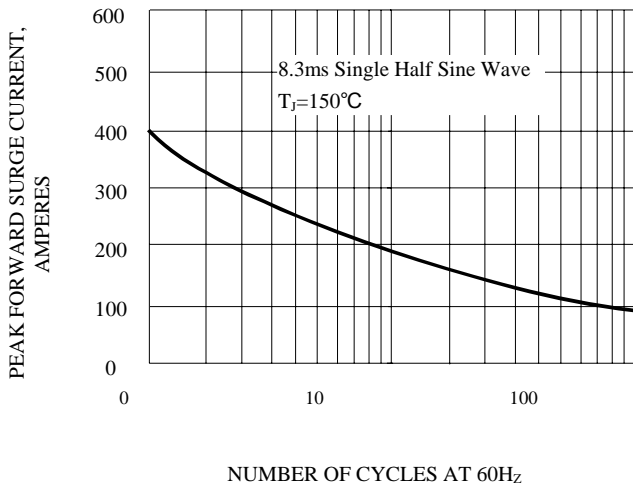


FIG. 4 - TYPICAL REVERSE CHARACTERISTIC

