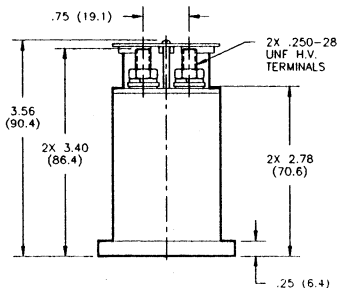


KILOVAC AP90X – 90 Amps (“SPUD”)

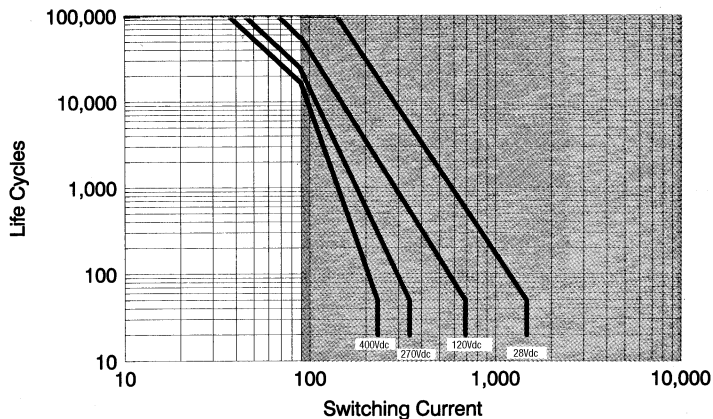


Note: Dimensions are expressed as inches (mm).

Features:

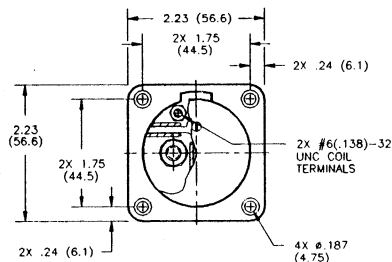
- 90 A carry, 350 A overload @ 270 Vdc
- Same size and weight as AP50X
- Versatile power, voltage, and current operating range
- Ideal for circuit protection and control
- Bi-directional switching
- Fast operate and release time
- Low power consumption
- Vacuum-sealed contacts; can operate in harsh environments
- Qualified to SAE ARD 50031 270 Vdc General Relay Spec.
- Space-rated version built in accordance with customers SCD.

CONTACT RATINGS*



Maximum continuous current carry = 90 Amps

* Based on data extrapolated from qualification at 270 Vdc with resistive load. Since each application is unique, user is encouraged to verify rating in actual application



PRODUCT SPECIFICATIONS

Part Number	UNIT	AP90X
Contact Arrangement		SPST-NO
Contact Form		X
Rated Resistive Load @ 270 Vdc	A	90
Continuous Current Carry, Max.		90
Overload @ 270 Vdc		350
Contact Resistance, Max.	mohm	2
Dielectric at Sea Level		
Coil to Power Terminals	Vrms	1,800
All Other Points		2,000
Shock, 11ms 1/2 Sine (peak)	g	30
Vibration, Sinusoidal (55-2000 Hz, peak)		20
Operating Ambient Temperature Range	°C	-55 to +85
Load Life, @ 270 Vdc, Min.	cycles	25,000
Operate Time, Excluding Bounce, Max.	ms	27
Release Time, Max.		10
Bounce Time, Max.		8
Insulation Resistance @ 500 Vdc, Min.		
Initial	Mohm	100
End of Life		50
Weight, Nominal	gram (oz)	454 (16)

COIL DATA

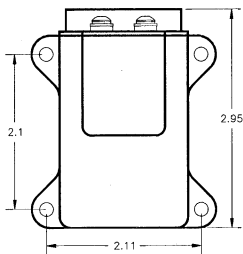
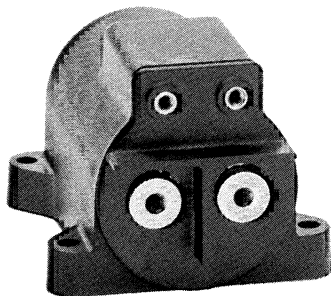
Volts, Nominal	12	28	120	Unit
Pickup, Max.	9.9	23	99	Vdc
Dropout, Min.	.4	1.0	4.0	
Coil Resistance (±10%)	19	103	1890	Ohm
Energy, Magnetic, Max.	.05	.05	.05	J

Coil resistance rated at 25°C

PART NUMBER SELECTION

Sample Part No. **AP90** **X** **B** **5** **7**
 Contact Form: X = SPST-NO Double Make
 Coil Voltage: B = 28 Vdc, Stud Terminals; C = 120Vdc, Stud Terminals
 Power Terminals: 5 = Stud Terminals
 Mounting: 7 = Panel Mount

KILOVAC AP90X-05 – 90 Amps (“SPUD”)

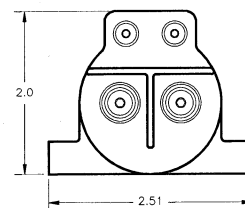
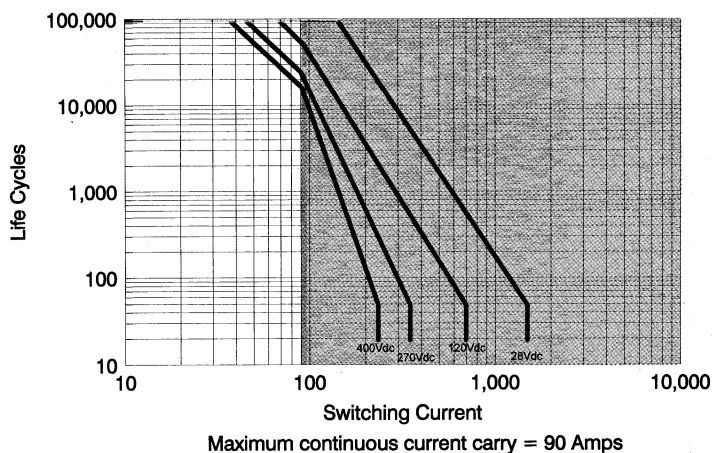


Note: Dimensions are expressed as inches (mm).

Features:

- 90 A carry, 350 A overload @ 270 Vdc
- Same size and weight as AP50X
- Versatile power, voltage, and current operating range
- Ideal for circuit protection and control
- Bi-directional switching
- Fast operate and release time
- Low power consumption
- Vacuum-sealed contacts; can operate in harsh environments
- Qualified to SAE ARD 50031 270 Vdc General Relay Spec.
- Space-rated version built in accordance with customers SCD.

CONTACT RATINGS*



* Based on data extrapolated from qualification at 270 Vdc with resistive load. Since each application is unique, user is encouraged to verify rating in actual application

PRODUCT SPECIFICATIONS

Part Number	UNIT	AP90X
Contact Arrangement		SPST-NO
Contact Form		X
Rated Resistive Load @ 270 Vdc	A	90
Continuous Current Carry, Max.		65
Overload @ 270 Vdc		350
Contact Resistance, Max.	mohm	2
Dielectric at Sea Level		
Coil to Power Terminals	Vrms	1,800
All Other Points		2,000
Shock, 11ms 1/2 Sine (peak)	g	30
Vibration, Sinusoidal (55-2000 Hz, peak)		20
Operating Ambient Temperature Range	° C	-55 to +90
Load Life, @ 270 Vdc, Min.	cycles	25,000
Operate Time, Excluding Bounce, Max.	ms	35
Release Time, Max.		10
Bounce Time, Max.		8
Insulation Resistance @ 500 Vdc, Min.		
Initial	Mohm	100
End of Life		50
Weight, Nominal	gram (oz)	454 (16)

COIL DATA

Volts, Nominal	12	28	120	Unit
Pickup, Max.	9.9	23	99	Vdc
Dropout, Min.	.4	1.0	4.0	
Coil Resistance (±10%)	19	103	1890	Ohm
Energy, Magnetic, Max.	.05	.05	.05	J

Coil resistance rated at 25°C