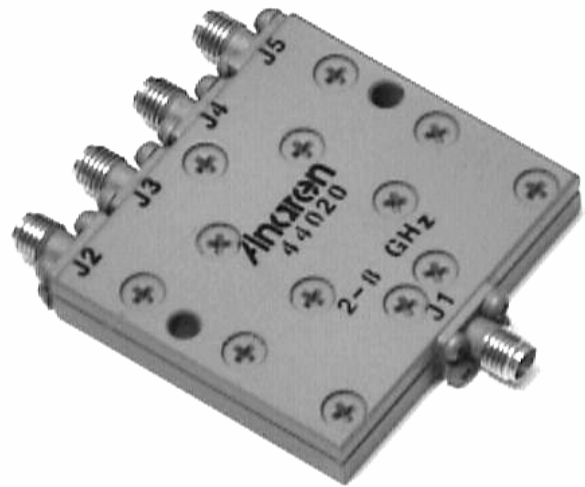


Power Dividers 4-Way



Applications

- Phased Arrays
- Antenna Feed Networks
- Image Reject Mixers
- Test Systems
- LO Power Dividers

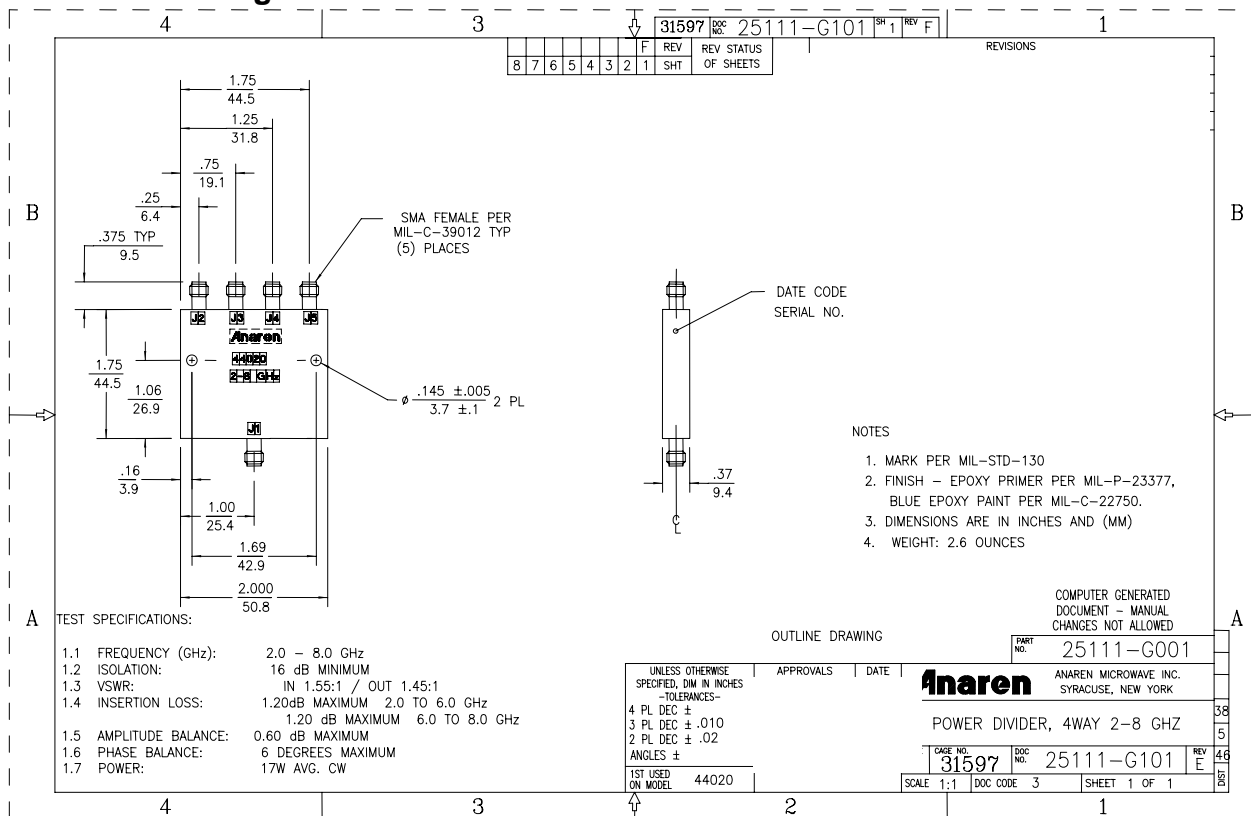
Features

- Military Grade
- 2.0 – 8.0 GHz
- 4-Way Power Split
- In-Phase
- Connectors Per MIL-C-39012
- Rugged Aluminum Housing
- Low VSWR
- Meets MIL-E-5400 Class 2 Requirements

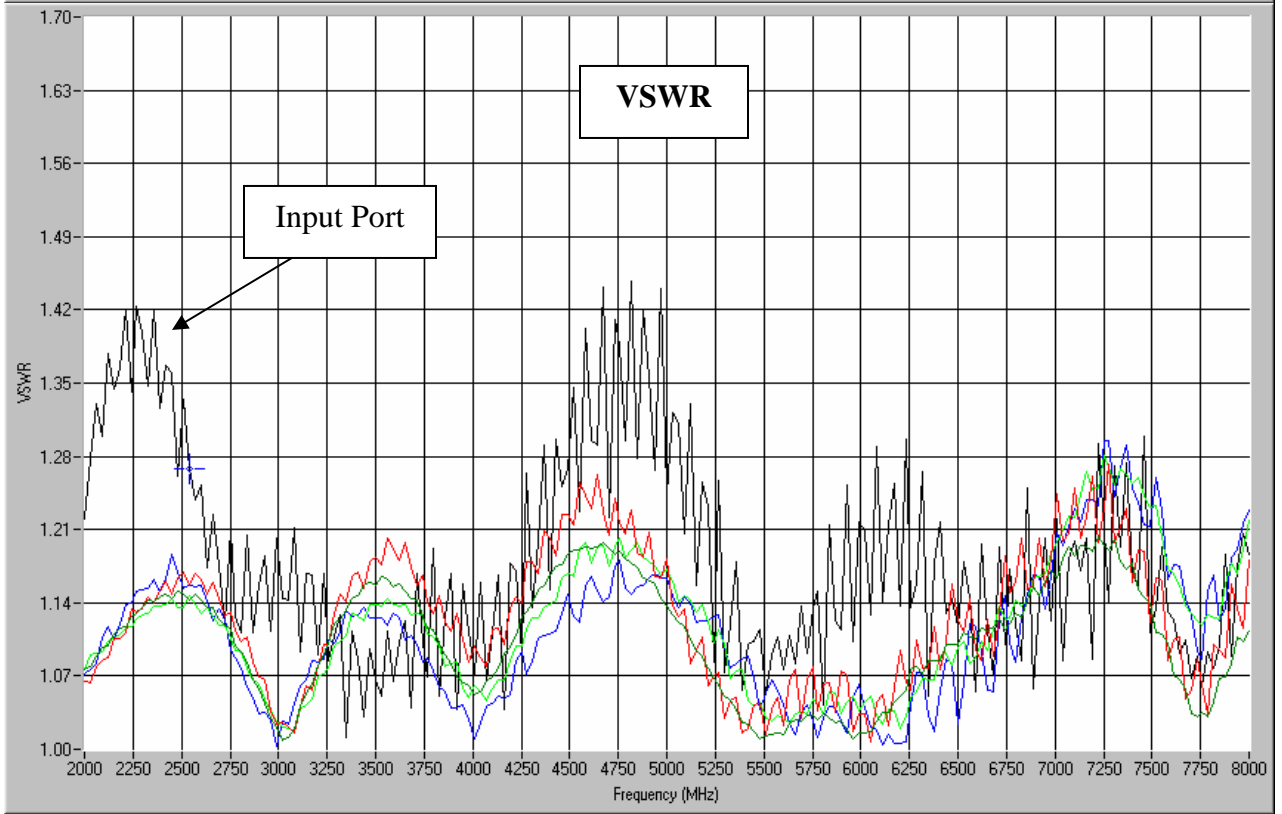
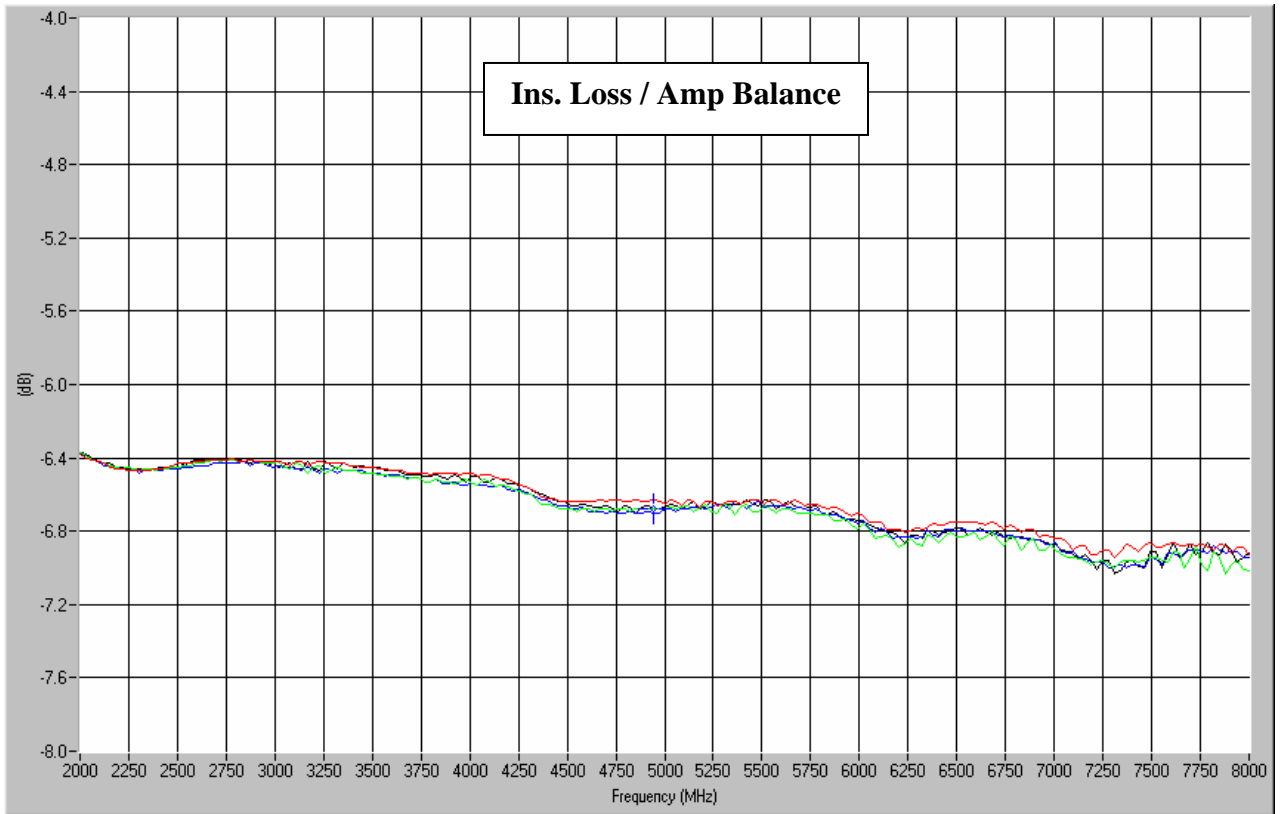
Outline Drawing

NOTES: Input power with load VSWR of 1.20:1

Electrical and Mechanical Specifications subject to change without notice



Typical Test Data Plots



USA/Canada: (315) 432-8909
 Toll Free: (800) 411-6596
 Europe: +44 2392-232392

Typical Test Data Plots

