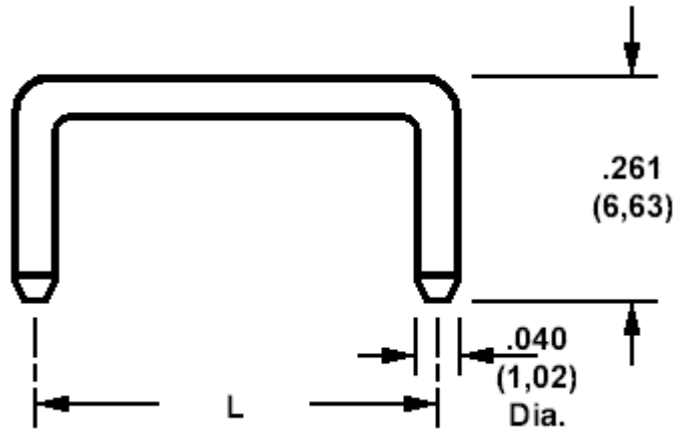


**360-0017 Shorting Link, non-insulated, .040 (1,02) diameter pins**

(For insulated version see 461-2872, 461-2871 and 461-3771)

**How to order code****360-0017-XX-03-00****Basic Part No XX = L dimension**

DIMENSIONS	
Dash No (XX)	L Dimension
-01	.200 (5,08)
-02	.250 (6,35)
-03	.300 (7,62)
-04	.400 (10,16)
-05	.500 (12,70)

MATERIALS		
Component	Material	Finish(-03)
Pin	Brass	Gold over Nickel