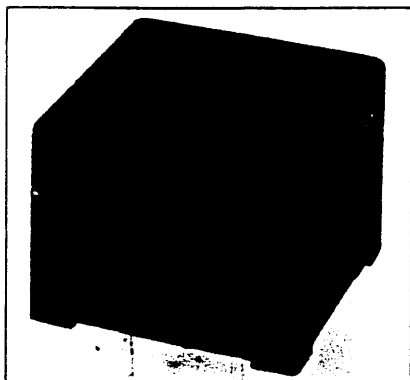


177-497

LOW PROFILE LINE ISOLATION TRANSFORMER

TYPE OEP1200 600:600 Ohms



GENERAL

Provides isolation between modems or similar devices and B.T. lines.

This transformer is designed for use in data transmission circuits where the line d.c. is diverted from the windings by a choke or solid state device.

The use of this transformer should enable the equipment it is used with to comply with the relevant requirements of BS6305.

CONSTRUCTION

Resin encapsulated in a black glass filled nylon box.
The unit is PCB mounting.

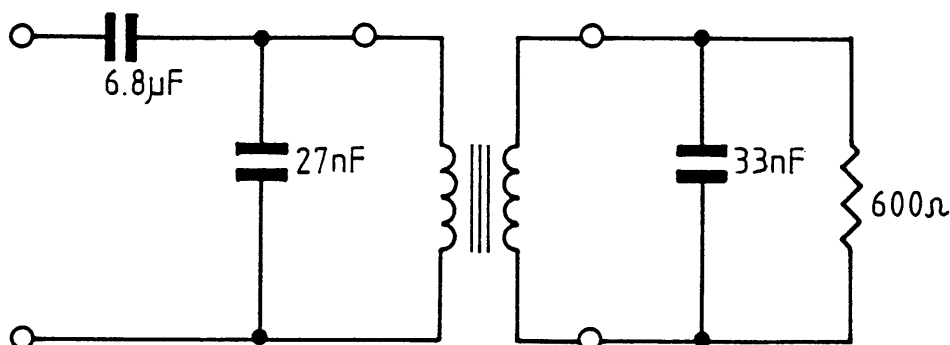
CHARACTERISTICS

(Measured under test circuit conditions)

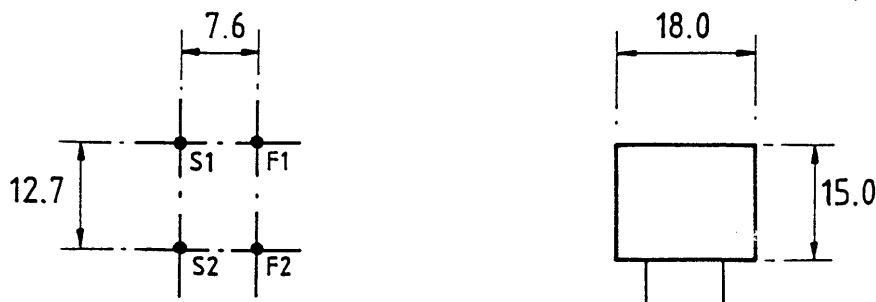
Insertion loss:	1.5dB max @ 2KHz.
Return loss:	-20dB @ 200Hz and 4KHz.
Isolation longitudinal:	3.54KV RMS or 5KV dc.
Saturation:	10V RMS 65V peak.
Balance:	Better than 80dB 200Hz-4KHz.
Signal/noise ratio:	>33dB

APPROVED TO BS415. CERTIFICATE No. 6786

TEST CIRCUIT



DIMENSIONS



SPECIAL DESIGNS

This series is not limited to the standard designs as shown above but can be adapted to suit Customers' specific requirements.