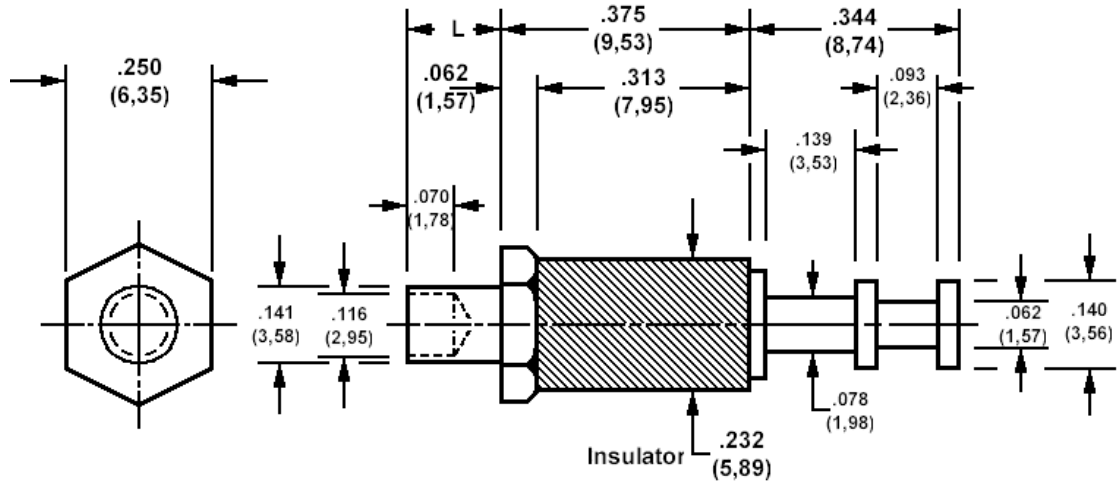


572-4813 Insulated solder terminal, Turreted



How to order code

572-4813-XX-YY-16

Basic Part No (XX = panel thickness, YY = plating finish. See tables for options)

Basic Part No.	XX	L	For Panel Thickness
572-4813	-01	.094 (2,39)	.062 (1,59)
	-02	.125 (3,18)	.094 (2,38)
	-03	.156 (3,96)	.125 (3,18)
	-04	.234 (5,94)	.188 (4,76)

Component	Material	Finish: (YY)	
		-01	-05
Terminal	Brass	Silver	Electro Solder
Stud	Brass	Cadmium (plus chromate)	Cadmium (plus chromate)
Insulator	Diallyl Phthalate (blue)		

Additional Specifications	
Dielectric Withstanding Voltage (VRMS)	6000

Recommended Spinning Tools	
Anvil	435-6805-01-00-00
Tool	435-6851-01-00-00