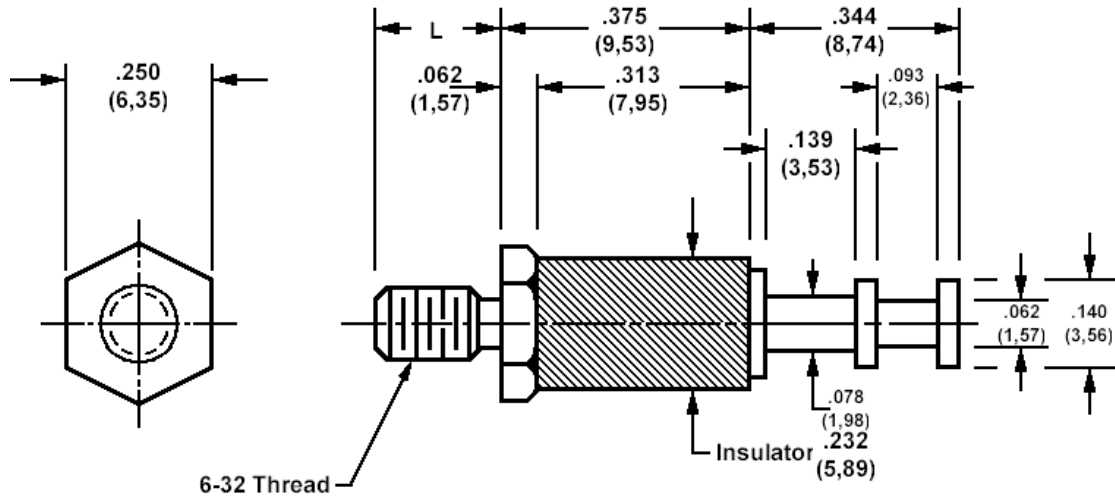


## 572-4811 Insulated solder terminal, Turreted



### How to order code

**572-4811-XX-YY-16**

Basic Part No (XX = thread length, YY = plating finish. See tables for options)

Basic Part No.	XX	L
572-4811	-01	.219 (5,16)
	-02	.250 (6,35)
	-03	.375 (9,53)

Component	Material	Finish <sup>1</sup> (YY)	
		-01	-05
Terminal	Brass	Silver	Electro Solder
Stud	Brass	Cadmium (plus chromate)	Cadmium (plus chromate)
Insulator	Diallyl Phthalate (blue)		

Additional Specifications	
Dielectric Withstanding Voltage (VRMS)	6000