

FEATURES AND SPECIFICATIONS

Features and Benefits

- 6 to 72 circuits
- Holds wires for secure, reliable contact
- Modular construction reduces inventory
- High flammability rating

Reference Information

UL: File No. E48521
 Guide No. XCFR2
 CSA: File No. 025562



**5.08mm (.200") Pitch
 Beau Eurostyle®
 High Profile, Three Level
 Terminal Block**

Electrical

Voltage: 300 V
 Maximum Current: 24 Amp
 Insulation Resistance: >5,000 Megaohms

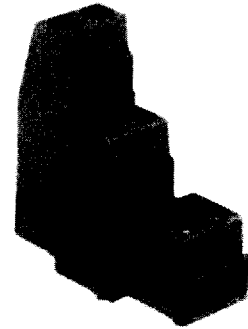
Mechanical

Rec. Tightening Torque: 5 in. lbs, .56 Nm
 Operating Temperature: 110°C
 Wire Strip Length: 1/4" or 6mm

Physical

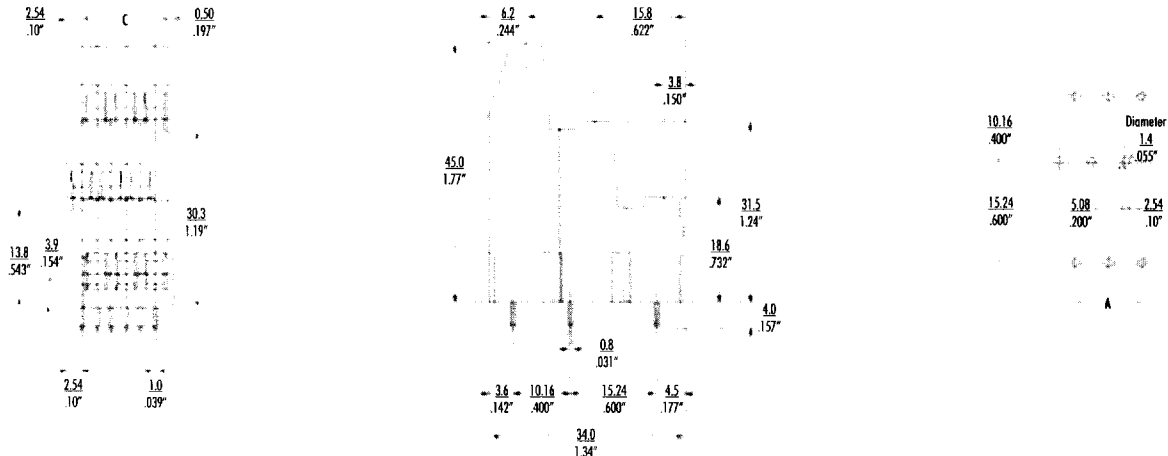
Housing: Polyamide, UL94 V-0, black
 Screws: Bronze
 Screw Plating: Nickel
 Contacts: Copper Alloy
 Contact Plating: Tin
 Pressure Clamp: Brass
 Pressure Clamp Plating: Nickel
 Wire Range: 12 to 26 AWG, 2.5 to 0.2mm²

**39880
 Modular**



88 Series

CATALOG DRAWING (FOR REFERENCE ONLY)



ORDERING INFORMATION AND DIMENSIONS

Order # (Engineering #) Replace XX with # of circuits, 06-72

Tin Plated
 39880-10XX (8834XX)

| # of Circuits | A | | C | | # of Circuits | A | | C | |
|---------------|------|------|------|------|---------------|------|-------|------|-------|
| | in | mm | in | mm | | in | mm | in | mm |
| 6 | .20 | 5.1 | .42 | 10.2 | 42 | 2.60 | 66.0 | 2.82 | 71.1 |
| 9 | .40 | 10.2 | .62 | 15.2 | 45 | 2.80 | 71.1 | 3.02 | 76.2 |
| 12 | .60 | 15.2 | .82 | 20.3 | 48 | 3.00 | 76.2 | 3.22 | 81.3 |
| 15 | .80 | 20.3 | 1.02 | 25.4 | 51 | 3.20 | 81.3 | 3.42 | 86.4 |
| 18 | 1.00 | 25.4 | 1.22 | 30.5 | 54 | 3.40 | 86.4 | 3.62 | 91.4 |
| 21 | 1.20 | 30.5 | 1.42 | 35.6 | 57 | 3.60 | 91.4 | 3.82 | 96.5 |
| 24 | 1.40 | 35.6 | 1.62 | 40.6 | 60 | 3.80 | 96.5 | 4.02 | 101.6 |
| 27 | 1.60 | 40.6 | 1.82 | 45.7 | 63 | 4.00 | 101.6 | 4.22 | 106.7 |
| 30 | 1.80 | 45.7 | 2.02 | 50.8 | 66 | 4.20 | 106.7 | 4.42 | 111.8 |
| 33 | 2.00 | 50.8 | 2.22 | 55.9 | 69 | 4.40 | 111.8 | 4.62 | 116.8 |
| 36 | 2.20 | 55.9 | 2.42 | 61.0 | 72 | 4.60 | 116.8 | 4.82 | 121.9 |
| 39 | 2.40 | 61.0 | 2.62 | 66.0 | | | | | |

*Consult factory for imprinting and other options