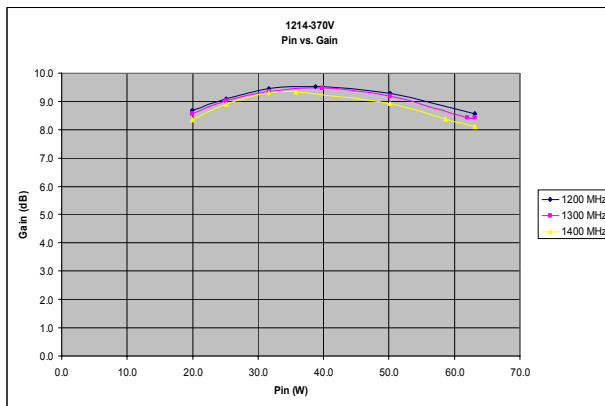
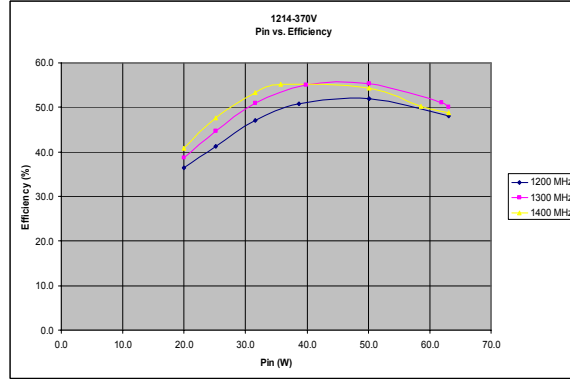
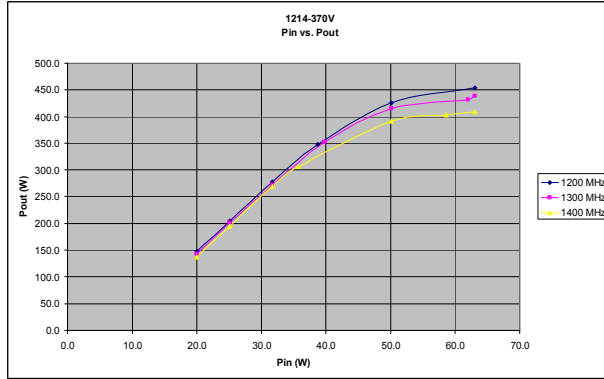


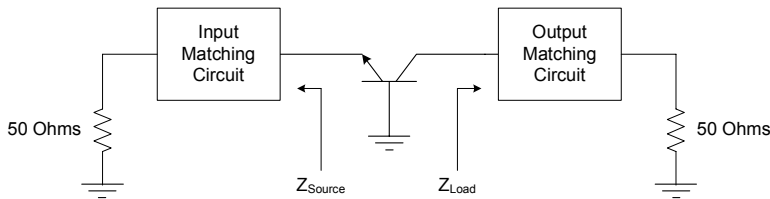


1214-370V

Performance Curves



Impedance Information



Impedance		
Freq	Zs	Zl
1200	1.75-j2.23	1.52-j2.11
1300	1.75-j1.63	1.36-j1.97
1400	1.76-j1.19	1.13-j1.77

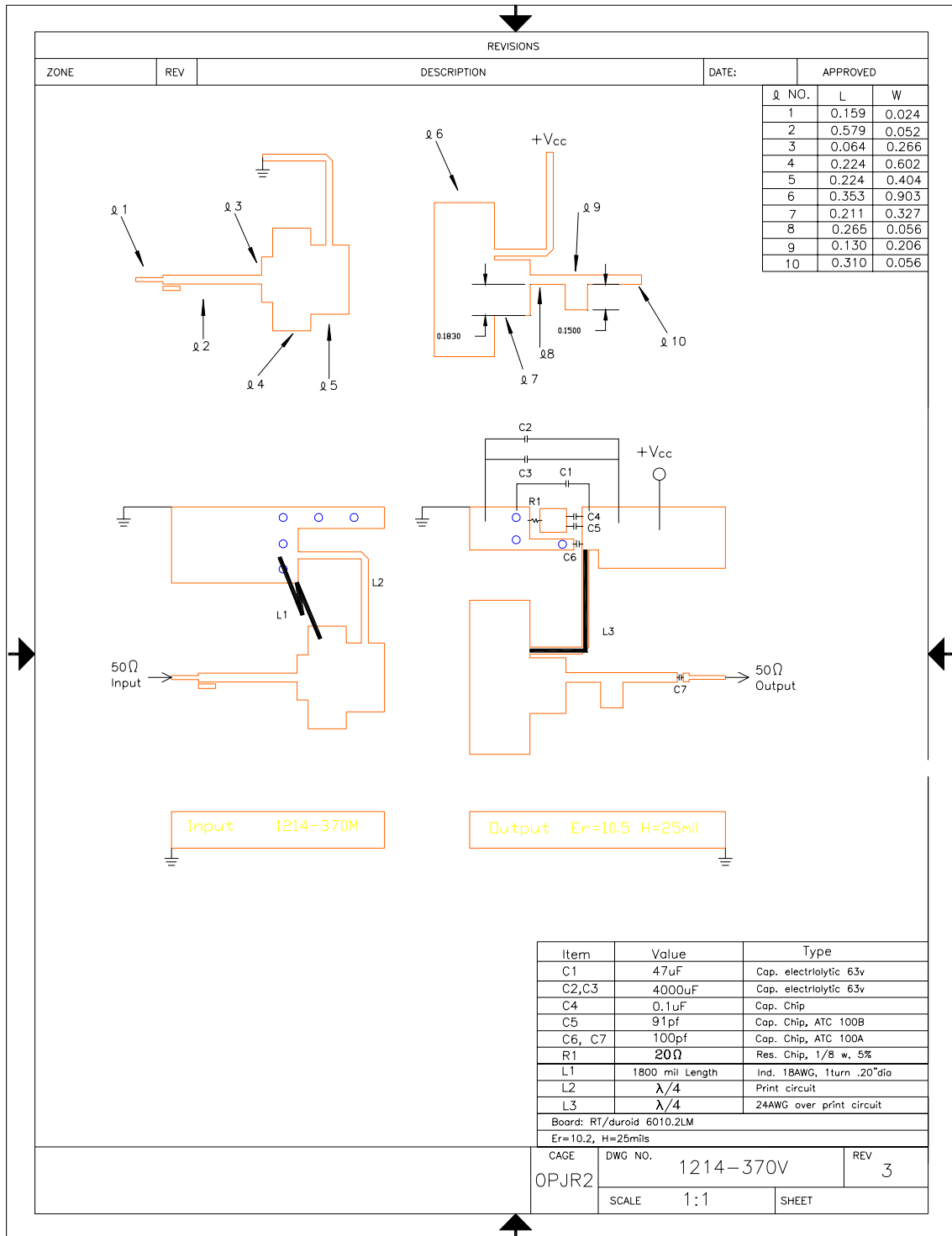
Board Material RT 6010.2 LM 25 Mil
TRL Measurement

MSC Corp., reserves the right to make changes without further notice. MSC recommends that before the product(s) described herein are written into specifications, or used in critical applications, that the performance characteristics be verified by contacting the factory.



1214-370V

Broadband Test Fixture



MSC Corp., reserves the right to make changes without further notice. MSC recommends that before the product(s) described herein are written into specifications, or used in critical applications, that the performance characteristics be verified by contacting the factory.

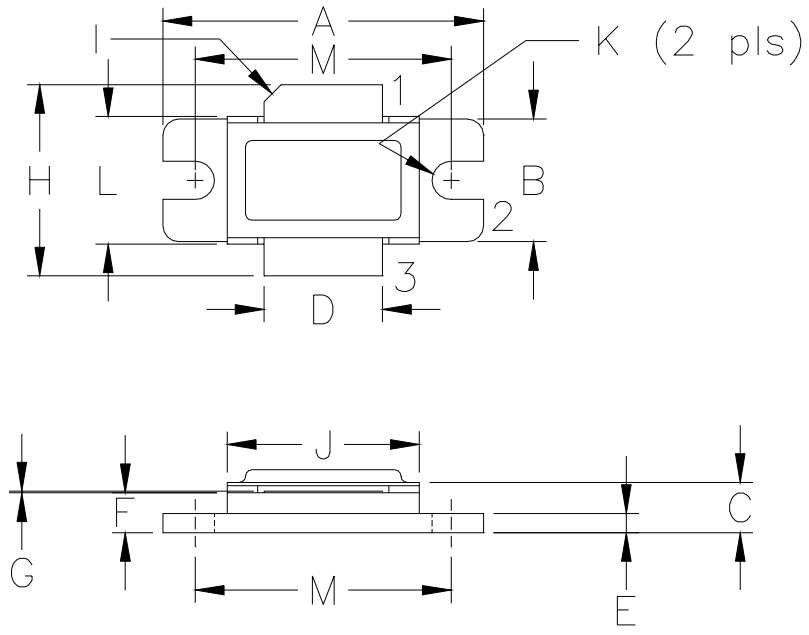


1214-370V R1

1214-370V

MSC Corp., reserves the right to make changes without further notice. MSC recommends that before the product(s) described herein are written into specifications, or used in critical applications, that the performance characteristics be verified by contacting the factory.

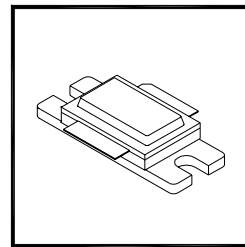
MSC Corp. 3000 Oakmead Village Drive, Santa Clara, CA 95051-0808 TEL. 408-986-8031 FAX 408-869-2324



DIM	MILLIMETER	±TOL	INCHES	±TOL
A	25.40	.25	1.000	.010
B	9.78	.25	.385	.010
C	4.00	.19	.142	.007
D	9.40	.13	.370	.005
E	1.53	.13	.060	.005
F	3.18	.13	.125	.005
G	0.08	+05/-00	.003	+002/ -.000
H	19.05	0.51	.750	.020
I	45°	5°	45°	5°
J	15.24	.25	.600	.010
K	3.05 DIA	.13	.120 DIA	.005
L	10.15	.13	.400	.005
M	20.32	.25	.800	.010

STYLE 1:
 PIN 1 = COLLECTOR
 2 = BASE
 3 = EMITTER

STYLE 2:
 PIN 1 = COLLECTOR
 2 = EMITTER
 3 = BASE



MHz TECHNOLOGY
 RF - MICROWAVE SILICON POWER TRANSISTORS

DWG NO.

55ST

MSC Corp., reserves the right to make changes without further notice. MSC recommends that before the product(s) described herein are written into specifications, or used in critical applications, that the performance characteristics be verified by contacting the factory.

MSC Corp. 3000 Oakmead Village Drive, Santa Clara, CA 95051-0808 TEL. 408-986-8031 FAX 408-869-2324