

**NEW!**

SMT Power Inductors - LPO3310 Series



A mere 3,3 mm square by 1 mm high, the LPO3310 series is our smallest power inductor. It is perfect for low-profile applications with tight board space constraints such as mobile phones, digital cameras, PDAs and other handheld equipment.



Despite their small size, these inductors have very high saturation current ratings: up to 2.8 Amps! The specially designed ceramic case completely protects the windings and provides the best possible surface for pick and place handling.

Coilcraft **Designer's Kit C175** contains samples of all values shown. To order, contact Coilcraft or purchase on-line at <http://order.coilcraft.com>.

SPICE models ON OUR WEB SITE OR CD

Part number ¹	L ² ±20% (µH)	DCR ³ max (Ohms)	SRF ⁴ typ (MHz)	Isat ⁵ (A)	Irms ⁶ (A)
LPO3310-301MX_	0.30	0.040	420	2.8	2.8
LPO3310-471MX_	0.47	0.042	310	2.3	2.3
LPO3310-701MX_	0.70	0.068	200	1.9	1.9
LPO3310-102MX_	1.0	0.076	180	1.6	1.6
LPO3310-152MX_	1.5	0.12	153	1.4	1.4
LPO3310-222MX_	2.2	0.15	112	1.1	1.1
LPO3310-332MX_	3.3	0.20	91	0.95	0.95
LPO3310-472MX_	4.7	0.27	80	0.80	0.80
LPO3310-682MX_	6.8	0.36	68	0.66	0.66
LPO3310-103MX_	10.0	0.52	52	0.57	0.57
LPO3310-153MX_	15.0	0.80	36	0.45	0.45
LPO3310-223MX_	22.0	1.20	34	0.37	0.37
LPO3310-333MX_	33.0	1.78	27	0.30	0.30
LPO3310-473MX_	47.0	2.15	22	0.25	0.25

1. When ordering, please specify **packaging** code:

LPO3310-473MXC

Packaging: C = 7" machine-ready reel. EIA-481 embossed plastic tape (1000 parts per full reel).

B = Less than full reel. In tape, but not machine ready. To have a leader and trailer added (\$25 charge), use code letter C instead.

D = 13" machine-ready reel. EIA-481 embossed plastic tape (3500 parts per full reel).

- Inductance tested at 100 kHz, 0.1 V_{rms} using an Agilent/HP 4192A.
 - DCR measured on a micro-ohmmeter.
 - SRF measured using Agilent/HP 8753ES or equivalent.
 - DC current at which the inductance drops 10% (typ) from its value without current.
 - Average current for a 15°C (max) rise above 25°C ambient.
 - Operating and storage temperature range -40°C to +85°C.
 - Electrical specifications at 25°C.
- See Qualification Standards section for environmental and test data.

Coilcraft®

Specifications subject to change without notice.
Please check our website for latest information.

Document 352-1 Revised 11/10/04

1102 Silver Lake Road Cary, Illinois 60013 Phone 847/639-6400 Fax 847/639-1469

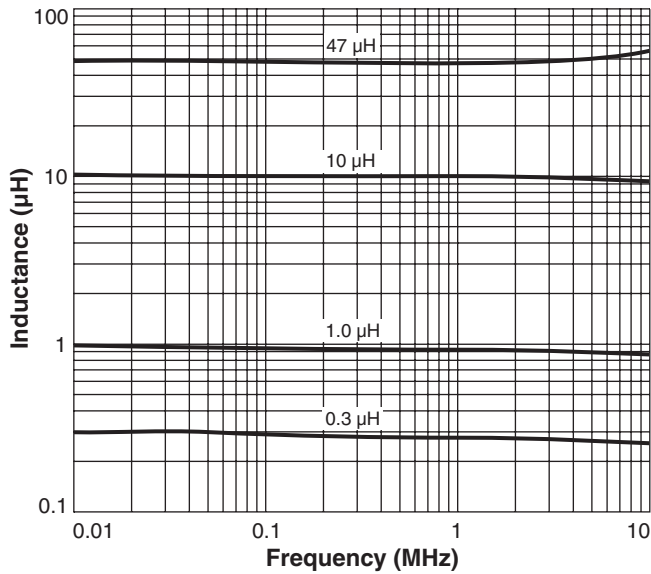
E-mail info@coilcraft.com Web <http://www.coilcraft.com>

NEW!

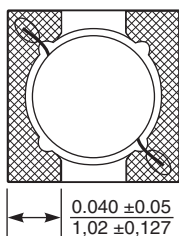
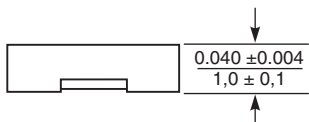
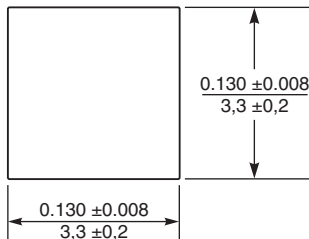
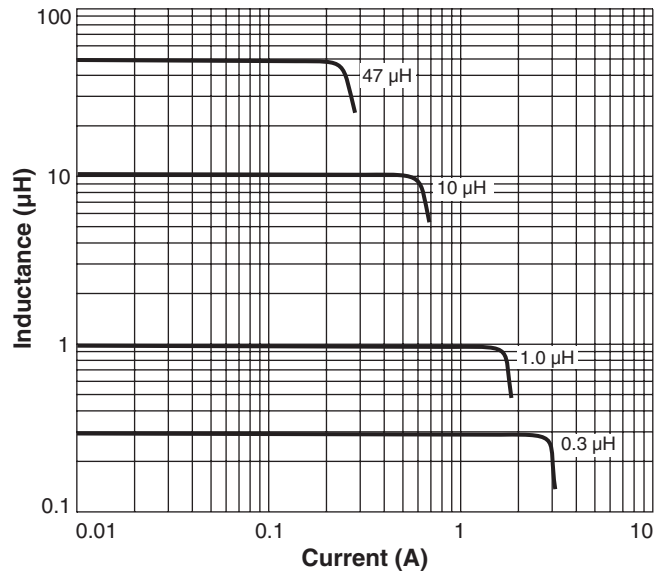


SMT Power Inductors - LPO3310 Series

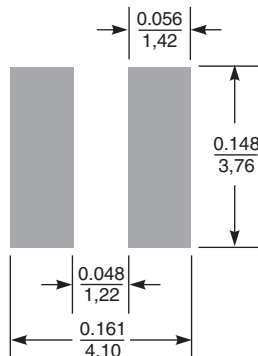
Typical L vs Frequency



Typical L vs Current



Recommended Land Pattern



Terminations: Platinum/palladium/silver
Tape and reel: 1000/7" reel; 3500/13" reel 12 mm tape width
 For packaging data see Tape and Reel Specifications section.



Specifications subject to change without notice.
 Please check our website for latest information. Document 352-2 Revised 12/14/04

1102 Silver Lake Road Cary, Illinois 60013 Phone 847/639-6400 Fax 847/639-1469
 E-mail info@coilcraft.com Web http://www.coilcraft.com