

DO NOT SCALE FROM THIS PRINT

NOTES:

1.  $\text{\textcircled{C}}$  REPRESENTS A CRITICAL DIMENSION.
2. BURR ALLOWANCE: .003[.08] MAX.
3. PARTS TO BE MOLDED TO POSITION.
4. MINIMUM PULLOUT FORCE: 5 lbs[22.24 N].
5. CONTACT MUST BE INSERTED UNTIL RETENTION FEATURE LOCKS INTO PLACE.
6. ALL FINISHED GOODS ARE TO BE LAYER PACKAGED IN SHIPPING.
7. **ONLY AVAILABLE IN TIN PLATING.**
8. ALL PARTS TO PASS ELECTRICAL TEST UPON ASSEMBLY (INCLUDING HI-POT TEST AT 1000 VOLTS DC).
9. APPLICATIONS INVOLVING SEVERE BENDING REQUIRE 6" MINIMUM CABLE LENGTH.
10. SEE DWL-01-XXX-X-XX.XX-XX-XX FOR WIRE PROCESSING AND CRIMP DIMENSIONS
11. NOTE DELETED.

**PMSS-XX-XXXX-XX-XX.XX-X-XXX**

No OF POSITIONS \_\_\_\_\_  
-02 THRU -10

WIRE GAUGE (AWG) \_\_\_\_\_  
[SEE TABLE 1]  
-16  
-18  
-206  
-203  
-22  
-24

WIRE COLOR \_\_\_\_\_  
LEAVE BLANK FOR ALL BLACK WIRE  
C: COLOR CODED WIRE  
[SEE COLOR SEQUENCE TABLE, SHEET 2]

LEAD STYLE \_\_\_\_\_  
-SP: STANDARD POWER (C-169-XX-SP-T)  
-HP: HIGH POWER (C-169-XX-HP-T)

OPTION  
[AVAILABLE ON -D END OPTION ONLY & APPLIES TO END 2 HOUSING]  
-LUS: LATCH UP, STRAIGHT (SEE FIG. 3, SHEET 2)  
-LDS: LATCH DOWN, STRAIGHT (SEE FIG. 4, SHEET 2)

END OPTION  
-S: SINGLE END  
-D: DOUBLE END (SELECT OPTION)

ASSEMBLED LENGTH  
SPECIFY IN INCHES (.03.00 INCH MINIMUM)  
[USE DWC-XX-XX-XXX]

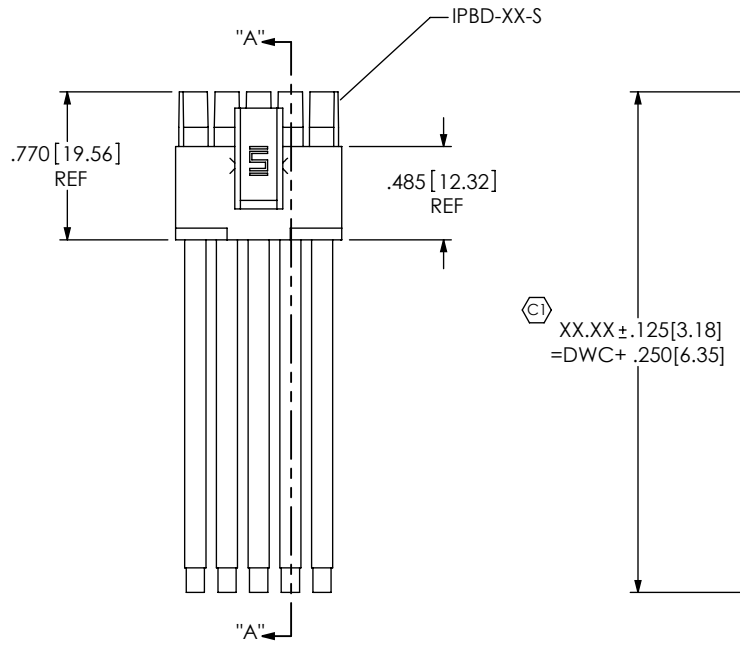
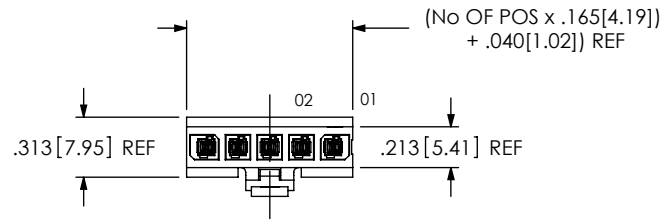
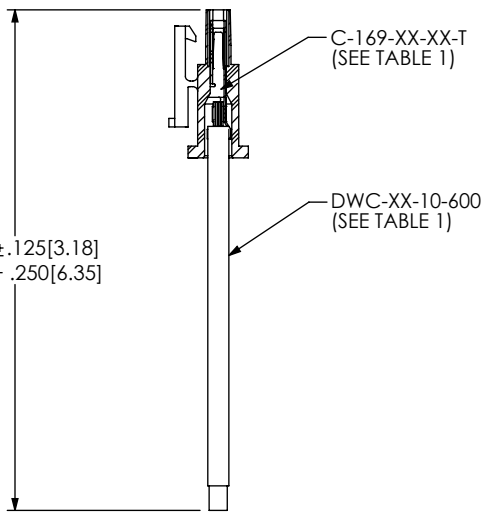


FIG. 1  
PMSS-05-22-XX-XX.XX-S SHOWN



SECTION "A"- "A"

FIG. 2  
PMSS-05-22-XX-XX.XX-D-LUS SHOWN  
[DIFFERENT AS SHOWN, OTHERWISE SAME AS FIG. 1]

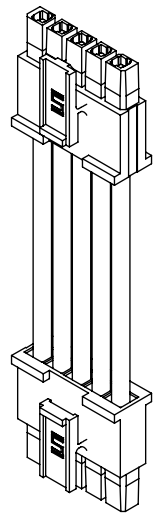
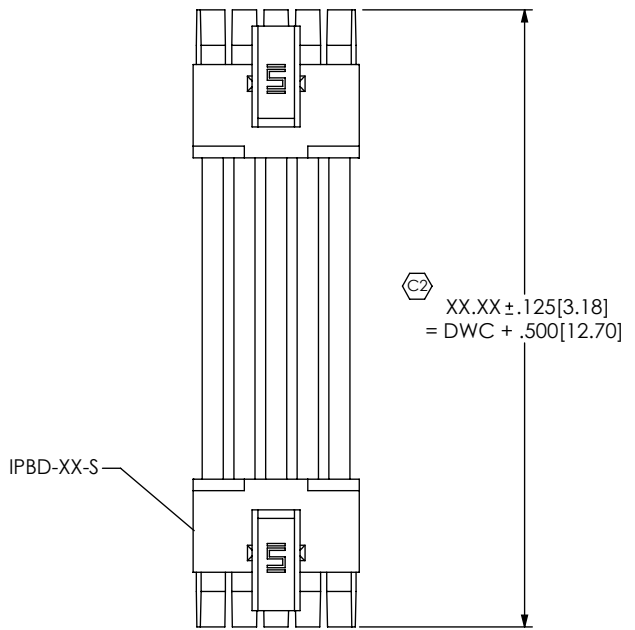



TABLE 1		
CABLE AWG	CABLE	CONTACT
16 AWG	DWC-16-XX-600	C-169-03-XX-T
18 AWG	DWC-18-XX-600	C-169-03-XX-T
206 AWG	DWC-20-XX-600	C-169-03-XX-T
203 AWG	DWC-20-XX-300	C-169-02-XX-T
22 AWG	DWC-22-XX-300	C-169-02-XX-T
24 AWG	DWC-24-XX-300	C-169-02-XX-T

UNLESS OTHERWISE SPECIFIED, DIMENSIONS ARE IN INCHES. TOLERANCES ARE:  
DECIMALS ANGLES  
.XX: ±.01 [.3] 2°  
.XXX: ±.005 [.13]  
.XXXX: ±.0020 [.051]

**PROPRIETARY NOTE**  
THIS DOCUMENT CONTAINS INFORMATION CONFIDENTIAL AND PROPRIETARY TO SAMTEC, INC. AND SHALL NOT BE REPRODUCED OR TRANSFERRED TO OTHER DOCUMENTS OR DISCLOSED TO OTHERS OR USED FOR ANY PURPOSE OTHER THAN THAT WHICH IT WAS OBTAINED WITHOUT THE EXPRESSED WRITTEN CONSENT OF SAMTEC, INC.

**MATERIAL:** DO NOT SCALE DRAWING SHEET SCALE: 1:1  
HOUSING: VALOX 457, COLOR: NATURAL  
CONTACT: PHOS BRONZE  
CABLE: INSULATION: PVC  
WIRE: TINNED COPPER (NOT LEAD FREE)  
F:\DWG\MISC\mktg\PMSS-XX-XXXX-XX-XX-X-XXX-MKT.SLDDRW



520 PARK EAST BLVD, NEW ALBANY, IN 47150  
PHONE: 812-944-6733 FAX: 812-948-5047  
e-Mail: info@SAMTEC.com code: 53322

DESCRIPTION:  
.165[4.19] SOCKET DISCREET CABLE ASSEMBLY

DWG. NO.  
**PMSS-XX-XXXX-XX-XX.XX-X-XXX**

BY: DEAN P 04/14/2005 SHEET 1 OF 2

FIG. 3

PMSS-05-22-XX-XX.XX-D-LUS SHOWN  
 [DIFFERENT AS SHOWN, OTHERWISE SAME AS FIG. 1]

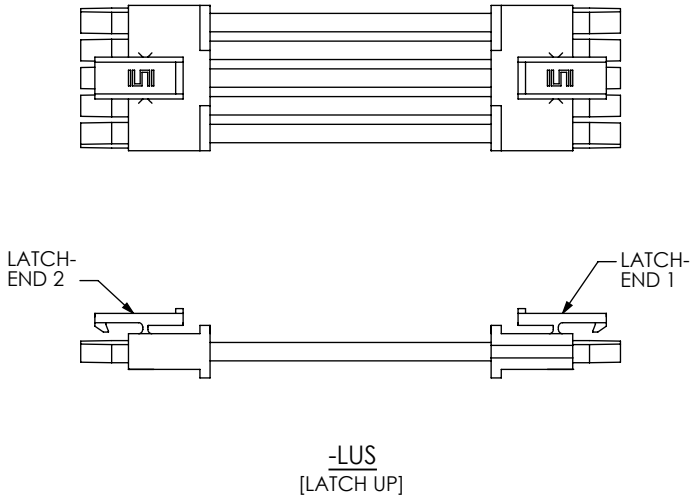
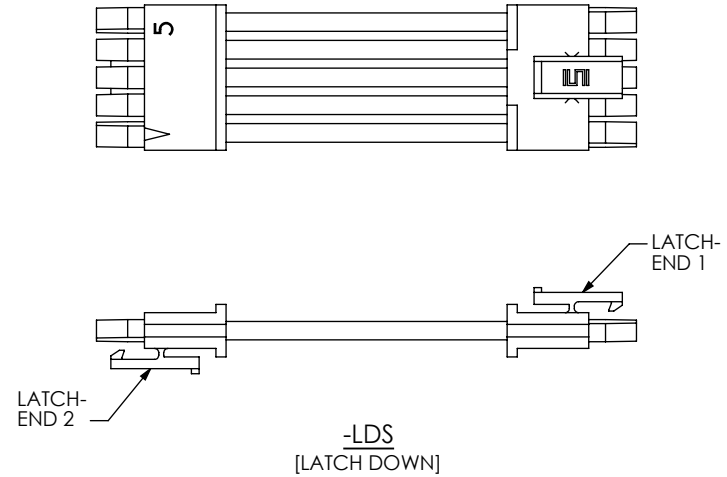


FIG. 4

PMSS-05-22-XX-XX.XX-D-LDS SHOWN  
 [DIFFERENT AS SHOWN, OTHERWISE SAME AS FIG. 1]




**PMSS color coded wire sequence**

pin#	color									
	brown	red	orange	yellow	green	blue	violet	gray	white	black
	1	2	3	4	5	6	7	8	9	10

**PROPRIETARY NOTE**  
 THIS DOCUMENT CONTAINS INFORMATION CONFIDENTIAL AND PROPRIETARY TO SAMTEC, INC. AND SHALL NOT BE REPRODUCED OR TRANSFERRED TO OTHER DOCUMENTS OR DISCLOSED TO OTHERS OR USED FOR ANY PURPOSE OTHER THAN THAT WHICH IT WAS OBTAINED WITHOUT THE EXPRESSED WRITTEN CONSENT OF SAMTEC, INC.

DO NOT SCALE DRAWING

SHEET SCALE: 0.875:1



520 PARK EAST BLVD., NEW ALBANY, IN 47150  
 PHONE: 812-944-6733 FAX: 812-948-5047  
 e-Mail: info@SAMTEC.com code: 55322

DESCRIPTION:  
 .165[4.19] SOCKET DISCREET CABLE ASSEMBLY

DWG. NO.  
**PMSS-XX-XXXX-XX-XX.XX-X-XXX**

BY: DEAN P 04/14/2005 SHEET 2 OF 2