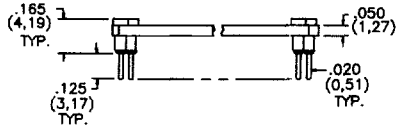


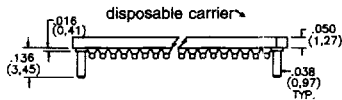
LOW PROFILE



Specify Contact/Shell

- 001B** 30μ" Gold/200μ" Tin
- 002B** 30μ" Gold/10μ" Gold
- 011B** 10μ" Gold/200μ" Tin
- 014B** 200μ" Tin/200μ" Tin
- PTH =** .026 ± .003

FLUSH PROFILE PPC™

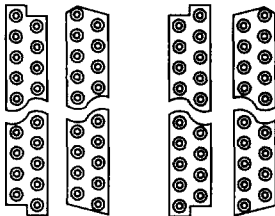


Specify Contact/Shell

- 710C** 30μ" Gold/200μ" Tin
- 711C** 30μ" Gold/10μ" Gold
- 714C** 200μ" Tin-Lead/200μ" Tin-Lead
- PTH =** .044 ± .003

PATTERN OPTIONS

Top View

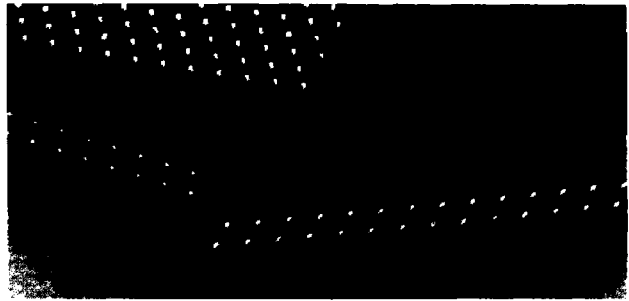


Standard Pattern Inverted Patterns

Insulators are
UL 94V-0 Rated
Thermoplastic

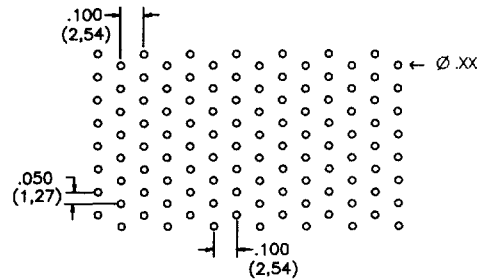
Features

- For high density memory using vertical zig-zag in-line patterns
- Available in 16, 18, 20, 24, and 28 positions
- End-to-end and side-to-side stackability
- PPC™ option provides as low as .016" (0,41) above board profile — near flush
- Wide variety of contact styles available
- Use inverted style to create Quad in-line patterns — no insulator crossbars



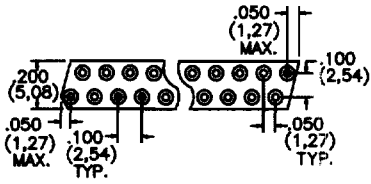
Ganged ZIP Pattern

- Ganged packages maximize device density
- Ganged ZIPs are available in arrays up to 20 ganged ZIPs of 32 pins each for a total of 640 pins
- Available in molded insulator or disposable PPC™



TYPICAL GANGED ZIP PCB LAYOUT

Parallelogram Insulators



VIEWED FROM TOP
OF CONTACTS



How To Order

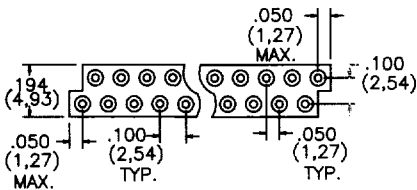
ZIP 1 x 20 - 0 1 1 B - L - E - I

Zig Zag Inline	Contact Style	Inverted (Option)
Number of Ganged Devices	Number of Contacts 16, 18, 20, 28	Hi-Temp Material Call Out (Option)*
	Parallelogram Shape	

*See page B1 for Material Callouts



Stepped Insulators



VIEWED FROM TOP
OF CONTACTS

How To Order

ZIP 1 x 24 - 0 1 1 B - S - E - I

Zig Zag Inline	Contact Style	Inverted (Option)
Number of Ganged Devices	Number of Contacts 16, 18, 28, 40	Hi-Temp Material Call Out (Option)*
	Stepped Shape	

*See page B1 for Material Callouts

Disposable Plastic Pin Carriers

- Available in a wide variety of contacts
- Ideal for flush profile or high-density ganged applications



How To Order

PPCZIP - 1 x 28 - 7 1 0 C

Patent No. 4,420,877

Plastic Pin Carrier (or HPC)	Zig Zag Inline	Number of Contacts per Device	Contact Style
	Number of Ganged Devices		