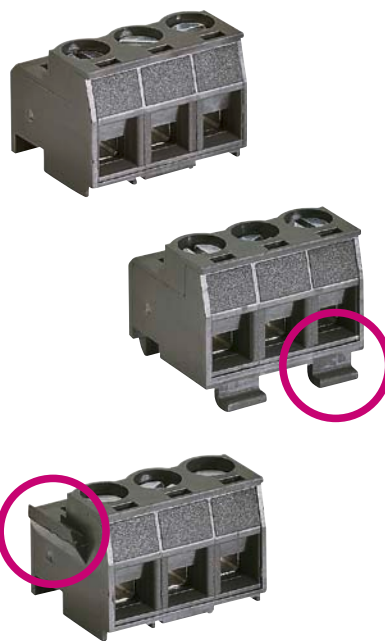


## wiecon type 8142 Z PC board terminal, pluggable

- ❑ Screw connection with rising cage technology
- ❑ Mates with pinstrip style header
- ❑ 5.0 mm spacing
- ❑ Different versions available:
  - 8142 Z: standard version mates with pinstrip header
  - 8142 Z RF: Mounting flanges at block base to attach to housing
  - 8142 Z F2: Lateral mounting flanges to attach block to housing
- ❑ Pin header also available in THR design
- ❑ 2 – 12-poles, can be adjacently mounted without loss of pole position
- ❑ Standard color black (similar to RAL 9005)



### Advantages

- ❑ Screw connection with rising cage technology
- ❑ Ideal for snap-on cover housing applications thanks to its innovative mounting flange options
- ❑ Reference to Wieland 8142
- ❑ Can be snapped together without loss of pole position
- ❑ Pin headers for wave and reflow soldering available

Description	
wiecon	Type 8142 Z
wiecon	Type 8142 Z / RF Mounting flange: base
wiecon	Type 8142 Z / F2 Mounting flange: lateral
Spacing	5 mm
Number of poles	2 – 12
Rated cross section	1.5 mm <sup>2</sup>
Insulation strip length	6 mm
Packaging units	Dependent on the number of poles
Rated current on the basis of 60999-1	8 A (ambient temperature 40 °C)
	3 A (ambient temperature 70 °C)
	8 A (UL), 5 A (CSA)
Rated voltage	250 V
	300 V (UL, CSA)
Rated impulse voltage	2.5 kV
Pollution degree	3
Material: Plastic	PA 6.6
– CTI	> 600
– Halogen-free	yes
– RoHS	compliant
Temperature range	-40° C to + 100° C (temporarily 140 °C)
Flammability according to UL 94	V0
Approvals	UL, CSA
Material: screw	Steel, tin-plated and passivated
Dimension:	M3
Tightening torque	max 0.5 Nm
Material: Clamping body	Tin-plated brass
Material: Contact spring	Tin-plated copper alloy
Pin header, wave soldering (packaging: box)	Z5.530.XX25.0 (XX = number of poles)
Pin header THR (packaging: tape on reel)	Z5.550.7214.0 (2-poles) – Z5.550. 8214.0 (12-poles)





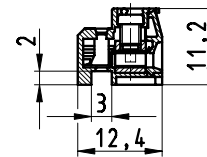
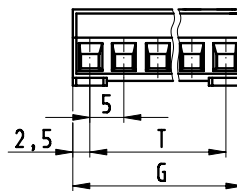
Headquarters:  
Wieland Electric GmbH  
Brennerstraße 10 – 14  
D-96052 Bamberg

Sales- and  
Marketing Center:  
Wieland Electric GmbH  
Benzstraße 9  
D-96052 Bamberg

Phone +49 (951) 93 24-0  
Fax +49 (951) 93 24-198  
www.wieland-electric.com  
www.gesis.com  
info@wieland-electric.com

## Technical information

### Type: 8142 Z



Type	Part. No.
8142 Z / 2 OB	27.602.0253.0
8142 Z / XX OB	27.602.XX53.0

XX = number of poles from 02 (2-poles) – 12 (12-poles)

### Industrial technology

Solutions for the control cabinet

- DIN rail terminal blocks
  - Screw, spring clamp or IDC connection technology
  - Wire cross sections up to 240 mm<sup>2</sup>
  - Numerous special functions
  - Software solutions interfacing to CAE systems
- Safety
  - Safety sensors
  - Safety relays
  - Modular safety systems with fieldbus link
- PLC and fieldbus components
  - Standard applications in IP20
  - Increased environmental conditions with railroad and ship approvals
- Interface
  - Coupling relays, semiconductor switches
  - Measuring and monitoring relays
  - Timer and switching relays
  - Analog modules
  - Passive interfaces
  - Power supply units
  - Overvoltage protection

Solutions for field applications

- Remote automation technology
  - Power distribution
  - Fieldbus interfaces and motor starters
- Connectors for industrial applications
  - Square and round connectors
  - Aluminum or plastic housings
  - Degree of protection up to IP68
  - Current-carrying capacity up to 100 A
  - Connectors for hazardous areas
  - Modular, application specific technology

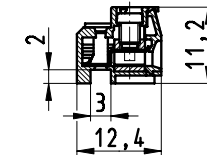
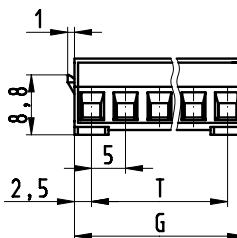
PC board terminals and connectors

- Screw or spring clamp connection technology
- Spacings: 3.5mm to 10.16mm
- Reflow or wave soldering process

### Building and installation technology

- Building installation systems
  - Main power supply connectors IP20/IP65 ... IP68
  - Bus connectors
  - Combined connectors
  - Low-voltage connectors
  - Power distribution system with flat cables
  - Distribution systems
  - Bus systems in KNX, LON and radio technology
  - DIN rail terminal blocks for electrical installations
  - Overvoltage protection

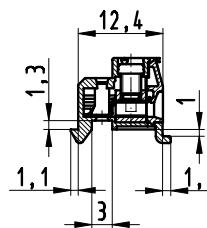
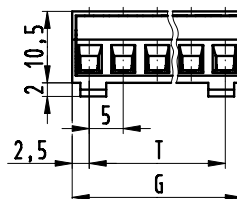
### Type: 8142 Z F2



Type	Part. No.
8142 Z / 2 F2 OB	27.602.3253.0
8142 Z / XX F2 OB	27.602.XX53.0

XX = number of poles from 32 (2-poles) – 42 (12-poles)

### Type: 8142 Z RF



Type	Part. No.
8142 Z / 2 RF OB	27.602.6253.0
8142 Z / XX RF OB	27.602.XX53.0

XX = number of poles from 62 (2-poles) – 72 (12-poles)

Type	Part. No.
Pin headers, 2-poles	Z5.530.0225.0
Pin headers, XX-poles	Z5.530.XX25.0
<b>Packaging: tape on reel</b>	
Pin headers, 2-poles	Z5.550.7214.0
Pin headers, XX-poles	Z5.530.XX14.0

XX = number of poles from 72 (2-poles) – 82 (12-poles)

