



# T1 (3mm) PC BOARD LEDs

DIFFUSED, CLEAR & WATER CLEAR

PART NO: **PC120 TR5-**

MODEL	LENS, COLOR, BRIGHT	LED COLOR	LED SPECS USED	ELECTRO-OPTICAL CHARACTERISTICS Ta=25°C Ir=100µA(MAX)				FEATURES
				If mA	Iv mcd min/typ	Vf typ/max	λ P nm	
<b>T1 (3mm) RT. ANGLE DIFFUSED INDICATOR PCB LEDs</b>								
PC120	TR6	ULTRA RED	L120TR6N	20	8.7/48	1.8/2.4	660	STD PRODUCT LEAVE BLANK 140=LEADS CUT .140 UNDER CASE HT=HI-TEMP PLASTIC CASE SO=STAND OFF P=LOCATING PIN
PCM120	TR5 (N)	HI-EFF RED	L120TR5N	20	3.4/11	2.0/2.8	635	
PCL120	TR5H	HI-EFF RED	L120TR5H	20	14/28	1.8/2.2	635	
SM120	TR1	STD RED	L120TR1N	20	0.3/0.8	1.7/2.0	655	
SMM120	TO5 (N)	ORANGE	L120TO5N	20	0.8/4	2.1/2.8	610	
	TY3K	3K mcd YELLOW	L120TY3KN	20	110/220	1.9/2.4	590	
	TY5 (N)	AMBER YELLOW	L120TY5N	20	3.4/11	2.1/2.8	585	
	TY5H	AMBER YELLOW	L120TY5H	20	21/42	1.9/2.7	585	
	TG6	ULTRA GREEN	L120TG6	20	22/44	2.1/2.8	565	
	TG5 (N)	HI-EFF GREEN	L120TG5N	20	3.4/11	2.1/2.8	565	
TG5H	HI-EFF GREEN	L120TG5H	20	28/56	1.8/2.2	565		
TPG5	PURE GREEN	L120TPG5	20	4/8	2.1/2.5	555		
TB4	BLUE	L120TB4	20	2/3.5	3.2/3.7	470		

<b>T1 (3mm) RT. ANGLE CLEAR ILLUMINATOR PCB LEDs</b>								
PC120	CWR400	ULTRA RED	L120CWR400	20	160/400	1.7/2.2	660	STD PRODUCT LEAVE BLANK 140=LEADS CUT .140 UNDER CASE HT=HI-TEMP PLASTIC CASE SO=STAND OFF P=LOCATING PIN
PCM120	CWR6N	ULTRA RED	LD120CWR6B	20	19/80	1.8/2.4	660	
PCL120	CWR5N	HI-EFF RED	LD120CWR5B	20	8/24	2.0/2.8	635	
SM120	CR5 (N)	HI-EFF RED	L120CR5N	20	8/24	2.0/2.8	635	
SMM120	CW05(N)	ORANGE	L120CW05N	20	6/16	2.0/3.0	610	
	CWY3K	3K mcd YELLOW	L120CWY3K	20	100/250	1.9/2.6	590	
	CWY5N	AMBER YELLOW	L120CWY5N	20	8/24	2.2/2.8	585	
	CY5 (N)	AMBER YELLOW	L120CY5N	20	8/24	2.1/2.8	585	
	CWLY5	LIME YELLOW	L120CWLY5	20	10/15	2.1/2.8	570	
	CWG6	ULTRA GREEN	L120CWG6	20	30/55	2.1/2.8	565	
	CWG5N	HI-EFF GREEN	L120CWG5N	20	8/24	2.1/2.8	565	
	CG5 (N)	HI-EFF GREEN	L120CG5N	20	8/24	2.1/2.8	565	
CWPG5	PURE GREEN	L120CWPG5	20	10/15	2.1/2.8	555		
CWB5	BLUE	L120CWB5	20	7/10	3.2/3.7	470		

<b>T1 (3mm) LOW CURRENT DIFFUSED INDICATOR PCB LEDs</b>								
PC120	TR5N-LC	HI-EFF RED	L120TR5N-LC	2	1.6/2.2	1.8/2.2	635	SAME AS ABOVE
PCM120	TR5H-LC	HI-EFF RED	L120TR5H-LC	2	1.8/2.4	1.8/2.2	635	
PCL120	TY5N-LC	AMBER YELLOW	L120TY5N-LC	2	1.7/2.3	1.9/2.7	585	
SM120	TY5H-LC	AMBER YELLOW	L120TY5H-LC	2	1.6/2.2	1.9/2.7	585	
SMM120	TG5N-LC	HI-EFF GREEN	L120TG5N-LC	2	1.6/2.2	1.8/2.2	565	
	TG5H-LC	HI-EFF GREEN	L120TG5H-LC	2	2.1/2.8	1.9/2.6	565	

### SPECIALS

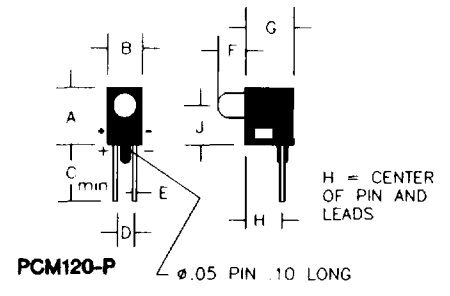
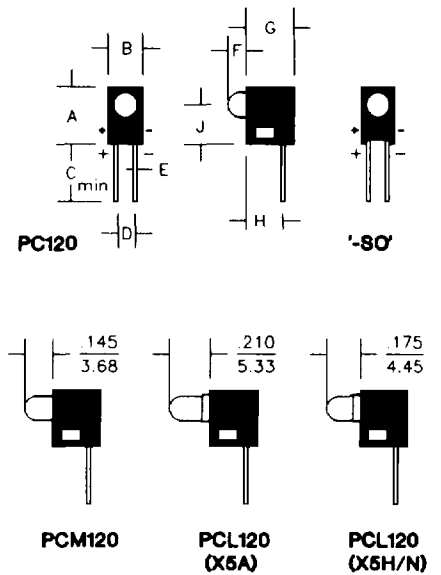
- 5V & 12V INTEGRATED RESISTOR LEDs
- BICOLOR/TRICOLOR LEDs
- INFRARED LEDs
- SURFACE MOUNT PCBs W/HI-TEMP CASE
- MULTIPLE LED ARRAYS

Topr = -30°C TO +85°C Tstg = -30°C TO +100°C

### MECHANICAL SPECIFICATIONS

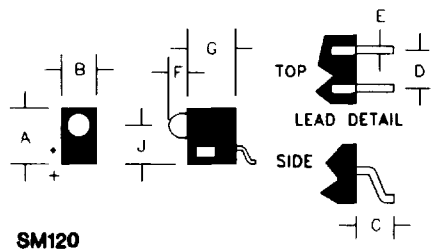
TX5N & CX6N DIRECTLY REPLACES TX4 & CX4 LEDs

MODEL	A (mm)	B (mm)	C (mm)	D (mm)	E (mm)	F (mm)	G (mm)	H (mm)	J (mm)
PC120	.290" (7.37)	.180" (4.57)	.500" (12.7)	.100" (2.54)	.020" (0.51)	.095" (2.41)	.250" (6.35)	.200" (5.08)	.200" (5.08)
PCM120-P	.290" (7.37)	.180" (4.57)	.500" (12.7)	.100" (2.54)	.020" (0.51)	.145" (3.68)	.250" (6.35)	.200" (5.08)	.200" (5.08)
SM120	.290" (7.37)	.180" (4.57)	.100" (2.54)	.100" (2.54)	.020" (0.51)	.095" (2.41)	.250" (6.35)	—	.200" (5.08)
SMM120	.290" (7.37)	.180" (4.57)	.100" (2.54)	.100" (2.54)	.020" (0.51)	.145" (3.68)	.250" (6.35)	.200" (5.08)	.200" (5.08)

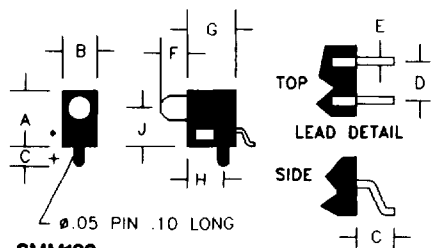


HOUSING MAT'L., COLOR  
NYLON OR VALOX, BLACK  
UL94VO, GRAY

### SURFACE MOUNT



SM120



SMM120

HOUSING MAT'L., COLOR  
UL94VO, GRAY