

PLEASE CHECK WWW.MOLEX.COM FOR LATEST PART INFORMATION

Part Number: **0872800500**
Status: **Active**
Description: 2.00mm (.079") Pitch Cable Holder, for Discrete Wire, Flat Cable and Ribbon Cable, 5 Circuits

Documents:

[3D Model](#) [Product Specification PS-87130-001 \(PDF\)](#)
[Drawing \(PDF\)](#) [RoHS Certificate of Compliance \(PDF\)](#)

Agency Certification

CSA LR19980

General

Product Family Ribbon Cable / Wire Trap Connectors
 Series [87280](#)
 Component Type One Piece
 Glow-Wire Compliant No
 Product Name Board-In, Cable Holder

Physical

Circuits (Loaded) 5
 Circuits (maximum) 5
 Color - Resin Natural
 Entry Angle Vertical
 Flammability 94V-0
 Lock to Mating Part None
 Material - Resin Polyester
 Number of Rows 1
 PCB Locator Yes
 PCB Retention Yes
 PCB Thickness Recommended (in) 0.062 In
 PCB Thickness Recommended (mm) 1.60 mm
 Packaging Type Bag
 Pitch - Mating Interface (in) 0.079 In
 Pitch - Mating Interface (mm) 2.00 mm
 Pitch - Term. Interface (in) 0.079 In
 Pitch - Term. Interface (mm) 2.00 mm
 Polarized to Mating Part Yes
 Polarized to PCB No
 Shrouded Fully
 Stackable No
 Surface Mount Compatible (SMC) No
 Temperature Range - Operating -40°C to +105°C
 Wire Insulation Diameter 1.42mm (.056") max.
 Wire Size AWG 26, 28
 Wire/Cable Type Discrete Wire, Ribbon Cable

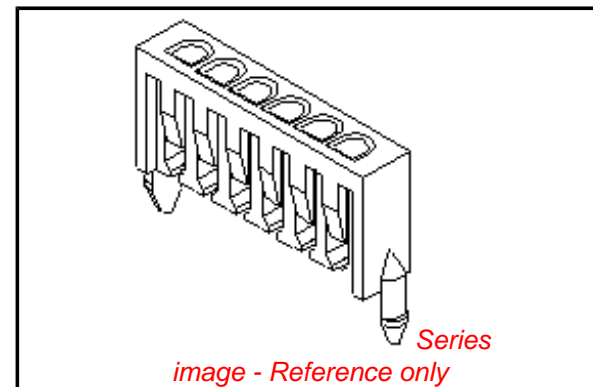
Electrical

Current - Maximum per Contact 1A
 Voltage - Maximum 125V

Material Info

Reference - Drawing Numbers

Product Specification PS-87130-001
 Sales Drawing SD-87280-**00



EU RoHS

ELV and RoHS Compliant
REACH SVHC Contains SVHC: No
Halogen-Free Status

China RoHS



Not Halogen-Free
Need more information on product environmental compliance?

Email productcompliance@molex.com
 For a multiple part number RoHS Certificate of Compliance, [click here](#)

Please visit the [Contact Us](#) section for any non-product compliance questions.

Search Parts in this Series

[87280Series](#)

Mates With

N/A

Use With

Discrete Wire, Flat Cable, or Ribbon Cable

This document was generated on 04/19/2010

PLEASE CHECK WWW.MOLEX.COM FOR LATEST PART INFORMATION

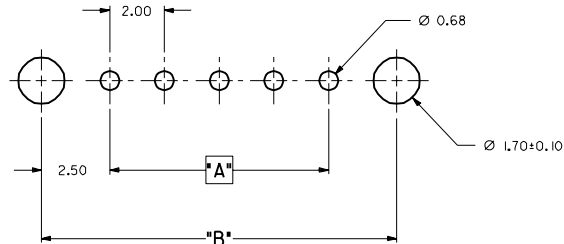
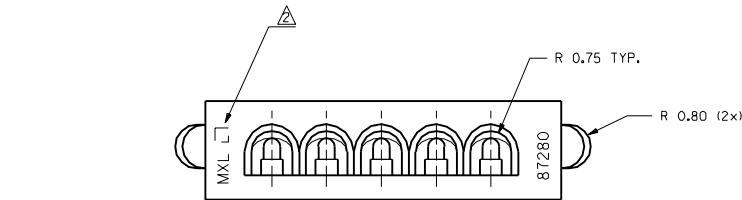
ENG. NO SD-87280-**-00

EDP NO.

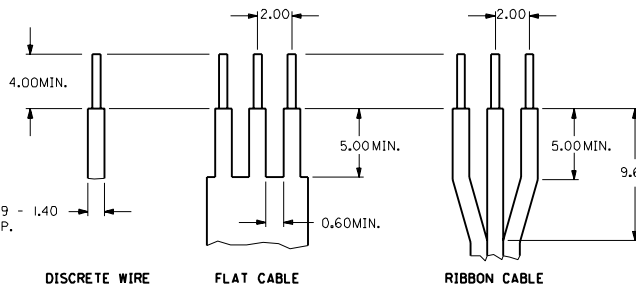
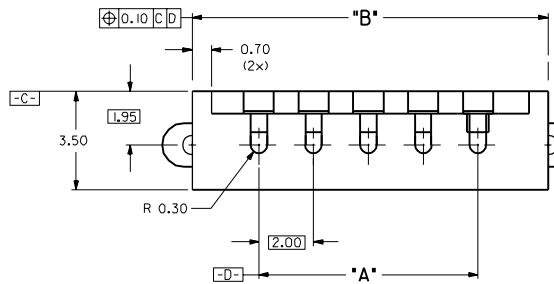
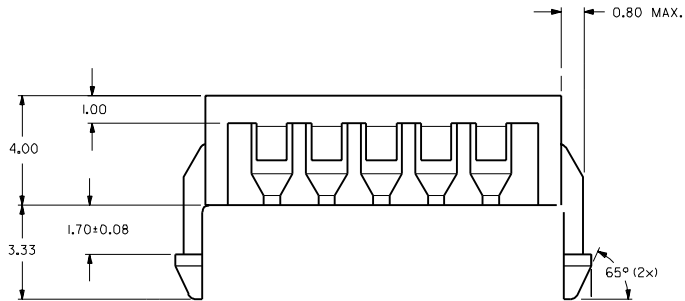
SIMILAR ITEM

PROJECT NO. S87280.DGN

DO NOT SCALE DRAWING



RECOMMENDED P.C. BOARD LAYOUT
PCB THICKNESS = 1.57mm



CABLE DIMENSIONS REF.

NOTES:

- FOR ILLUSTRATION PURPOSES, 5 CIRCUITS HAS BEEN SHOWN.
- MXL LOGO, CAVITY IDENT, ENG. NO. TO BE AS LARGE AS POSSIBLE AND AS LOCATED.
- PARTS TO BE FLAT WITHIN .0045mm/mm AT WIRE ENTRY POSITION.
- THIS WIRE HOLDER IS FOR USE WITH 28 TO 26 AWG WIRE.

MM

ENG. NO.	CKT SIZE	"A" MM	"B" MM
SD-87280-0200	2	2.00	7.00
SD-87280-0300	3	4.00	9.00
SD-87280-0400	4	6.00	11.00
SD-87280-0500	5	8.00	13.00
SD-87280-0600	6	10.00	15.00
SD-87280-0700	7	12.00	17.00
SD-87280-0800	8	14.00	19.00
SD-87280-0900	9	16.00	21.00
SD-87280-1000	10	18.00	23.00
SD-87280-1100	11	20.00	25.00
SD-87280-1200	12	22.00	27.00
SD-87280-1300	13	24.00	29.00
SD-87280-1400	14	26.00	31.00
SD-87280-1500	15	28.00	33.00

MATERIAL : VALOX 310, UL 94V-0 COLOR : NATURAL				MOLEX F.E.M.L South SHEET 1 OF 1	
FINISH : _____				GENERAL TOLERANCES ANGLE : ± 1° DIM : ± .25/0.10	
B	UPDATE PER - S1468	AY	91301	ENG. NO. SD-87280-**-00	
A1	CORR NOTE 3 - S1323	AY	901211	REV B	
A	RFM PER S1290	AY	901129		
2	UPDATE PER S1231	AY	901101		
1	X-REL PER S0442	AY	900419		
LTR	REVISION RECORD	DR	DATE	DRAWN BY 900419 T A Y	CHK'D BY
REVISE ONLY ON CAD SYSTEM				APPR'D BY 900430 N K WONG	SCALE 6 : 1
				TITLE : 2.0mm CABLE HOLDER	