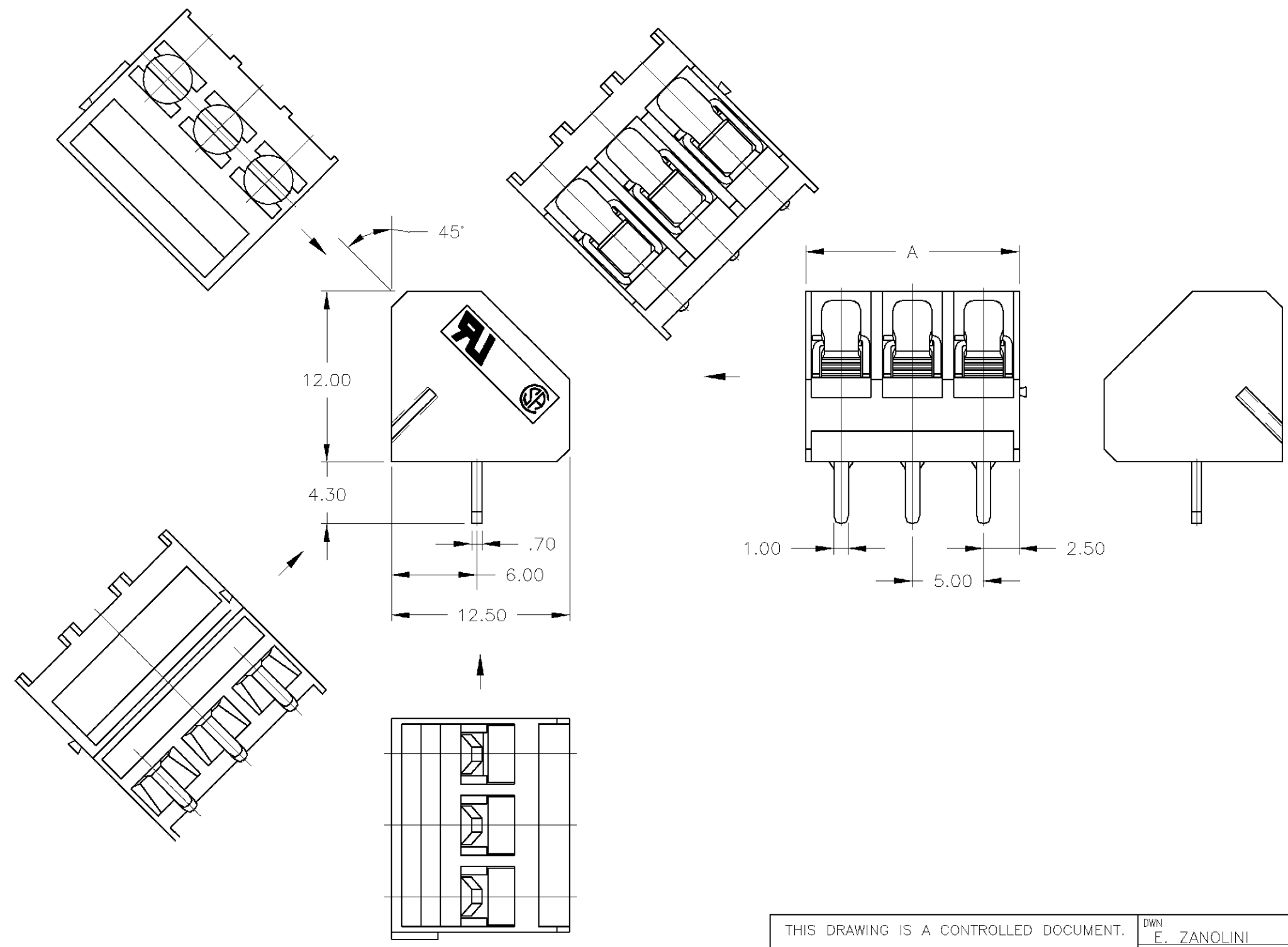


THIS DRAWING IS UNPUBLISHED. RELEASED FOR PUBLICATION
 © COPYRIGHT BY TYCO ELECTRONICS CORPORATION. ALL RIGHTS RESERVED.

LOC	DIST	REVISIONS			
P	LTR	DESCRIPTION	DATE	DWN	APVD
FT	0	B	REVISED PER 0G3B-0603-01	19OCT01	EZ DB



DIM. A	NO. OF POS.	PART NUMBER
120.00	24	2-796422-4
115.00	23	2-796422-3
110.00	22	2-796422-2
105.00	21	2-796422-1
100.00	20	2-796422-0
95.00	19	1-796422-9
90.00	18	1-796422-8
85.00	17	1-796422-7
80.00	16	1-796422-6
75.00	15	1-796422-5
70.00	14	1-796422-4
65.00	13	1-796422-3
60.00	12	1-796422-2
55.00	11	1-796422-1
50.00	10	1-796422-0
45.00	9	796422-9
40.00	8	796422-8
35.00	7	796422-7
30.00	6	796422-6
25.00	5	796422-5
20.00	4	796422-4
15.00	3	796422-3
10.00	2	796422-2

796422-3 AS SHOWN

THIS DRAWING IS A CONTROLLED DOCUMENT.		DWN E. ZANOLINI 26JAN01	BUCHANAN Tyco Electronics Corporation Harrisburg, PA 17105-3608	
DIMENSIONS: MM		CHK D. BIEVENOUR 26JAN01		
TOLERANCES UNLESS OTHERWISE SPECIFIED:		APVD D. BIEVENOUR 26JAN01	NAME TERMINAL BLOCK 45' WIRE INLET W/INTERLOCK, 5.00mm PITCH (LT)	
0 PLC ± - 1 PLC ± .3 2 PLC ± .25 3 PLC ± - 4 PLC ± - ANGLES ± -		PRODUCT SPEC -	SIZE A3	
MATERIAL -		FINISH -	CAGE CODE 00779	DRAWING NO C-796422
CUSTOMER DRAWING			RESTRICTED TO -	SCALE 3:1
			SHEET 1	OF 2
			REV B	

THIS DRAWING IS UNPUBLISHED. RELEASED FOR PUBLICATION
 © COPYRIGHT BY TYCO ELECTRONICS CORPORATION. ALL RIGHTS RESERVED.

LOC	DIST	REVISIONS			
P	LTR	DESCRIPTION	DATE	DWN	APVD
	B	SEE PAGE 1	-	-	-

1. Application and Features:

- 1-1. This series of terminal block has a built-in self lift wire guard clamp to protect against wire pinching.
- 1-2. Standard sizes are 2 and 3 way-blocks, but every number of contact can be combined, by simply plugging them together and can be ordered as required**
- 1-3. Since the wire inlet and the screw are in a 45° position, these terminal blocks are designed specifically to solve poor accessibility problems.—

2. Technical Data:

- 2-1. Material:
 - 2-1-1. HOUSING: PBT (Glass filled), or NY-FR15 UL 94 V-0 (Blue).
 - 2-1-2. Contact: Brass(Cu Zn)
Cu, Tin plated.
 - 2-1-3. Screw: Steel galvanized and chromatized, M2.6

2-2. Electrical:

- 2-2-1. Current rating: 10 Amps/way max.
- 2-2-2. Contact resistance: 20mΩ (Max).
- 2-2-3. Insulation resistance: 5000MΩ /1000V.
- 2-2-4. Withstanding Voltage: 1500VAC (1min).
test time =60sec/1pcs
- 2-2-5. Operation Voltage: 300 VAC.
- 2-2-6. Wire Range: 14-22 AWG.

2-3. Mechanical:

- 2-3-1. Torque: 4 Kg.cm (Max).
- 2-3-2. Operating temperature: -55°C to +105°C.
- 2-3-3. Solderability: 95% coverage (min).
test temperature=230°C±10°C
test time= 3sec ± 0.5sec.

THIS DRAWING IS A CONTROLLED DOCUMENT.		DWN E. ZANOLINI 26JAN01	Tyco Electronics Corporation														
DIMENSIONS: MM		CHK E. ZANOLINI 26JAN01	BUCHANAN Harrisburg, PA 17105-3608														
TOLERANCES UNLESS OTHERWISE SPECIFIED:		APVD D. BIEVENOUR 26JAN01	NAME TERMINAL BLOCK														
<table border="0"> <tr><td>0 PLC</td><td>± -</td></tr> <tr><td>1 PLC</td><td>± -</td></tr> <tr><td>2 PLC</td><td>± -</td></tr> <tr><td>3 PLC</td><td>± -</td></tr> <tr><td>4 PLC</td><td>± -</td></tr> <tr><td>ANGLES</td><td>± -</td></tr> </table>		0 PLC	± -	1 PLC	± -	2 PLC	± -	3 PLC	± -	4 PLC	± -	ANGLES	± -	PRODUCT SPEC -	45 DEGREE WIRE INLET		
0 PLC	± -																
1 PLC	± -																
2 PLC	± -																
3 PLC	± -																
4 PLC	± -																
ANGLES	± -																
MATERIAL -		FINISH -	APPLICATION SPEC -	W/INTERLOCK, 5.00mm PITCH (LT)													
		WEIGHT -	SIZE A3	CAGE CODE 00779	DRAWING NO C-796422												
CUSTOMER DRAWING			RESTRICTED TO -	SCALE 1:1	SHEET 2 OF 2												
			REV B														