

PLEASE CHECK WWW.MOLEX.COM FOR LATEST PART INFORMATION

Part Number: **5025781500**
Status: **Active**
Overview: clikmate wiretoboard connectors
Description: 1.50mm (.059") Pitch CLIK-Mate™ Wire-to-Board Housing, Single Row, Positive Lock, 15 Circuits

Documents:

3D Model	Product Specification PS-503175-001 (PDF)
Drawing (PDF)	Product Specification PS-503339-001 (PDF)
Application Specification (PDF)	Product Specification PS-503395-001 (PDF)
Product Specification PS-502584-001 (PDF)	RoHS Certificate of Compliance (PDF)
Product Specification PS-503159-001 (PDF)	

General

Product Family	Crimp Housings
Series	<u>502578</u>
Overview	<u>clikmate wiretoboard connectors</u>
Product Name	CLIK-Mate™

Physical

Circuits (maximum)	15
Color - Resin	Beige
Gender	Plug
Glow-Wire Compliant	No
Keying to Mating Part	Yes
Lock to Mating Part	Yes
Number of Rows	1
Packaging Type	Bag
Panel Mount	No
Pitch - Mating Interface (in)	0.059 In
Pitch - Mating Interface (mm)	1.50 mm
Polarized to Mating Part	Yes
Stackable	No
Temperature Range - Operating	-25°C to +85°C

Electrical

Current - Maximum per Contact	2A
-------------------------------	----

Material Info

Reference - Drawing Numbers

Application Specification	AS-502578-001, AS-502578-002, AS-503395-001
Product Specification	PS-502584-001, PS-503159-001, PS-503175-001, PS-503339-001, PS-503395-001, RPS-502584-002, RPS-502584-003, RPS-502584-004, RPS-502584-005, RPS-502584-006, RPS-503159-001, RPS-503159-003, RPS-503175-001, RPS-503175-002, RPS-503339-001
Sales Drawing	SD-502578-001

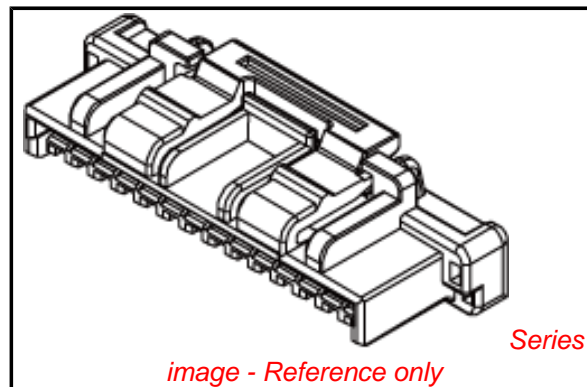


image - Reference only

EU RoHS

ELV and RoHS Compliant
REACH SVHC Contains SVHC: No
Halogen-Free Status

China RoHS



Not Reviewed

Need more information on product environmental compliance?

Email productcompliance@molex.com
 For a multiple part number RoHS Certificate of Compliance, [click here](#)

Please visit the [Contact Us](#) section for any non-product compliance questions.

Search Parts in this Series

502578Series

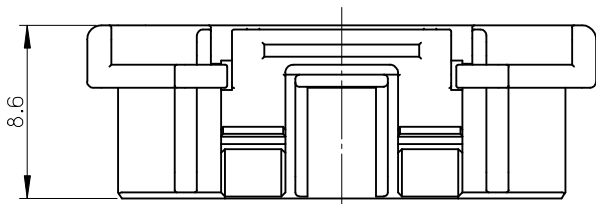
Mates With

502584 PCB Receptacle . 502585 PCB Receptacle

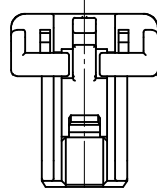
Use With

502579 Crimp Terminal

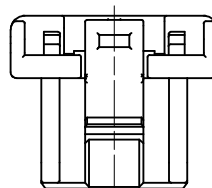
10 9 8 7 6 5 4 3 2 1



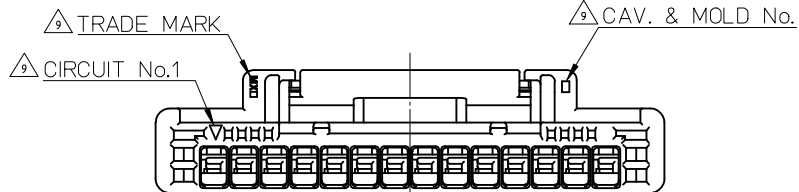
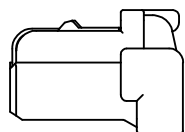
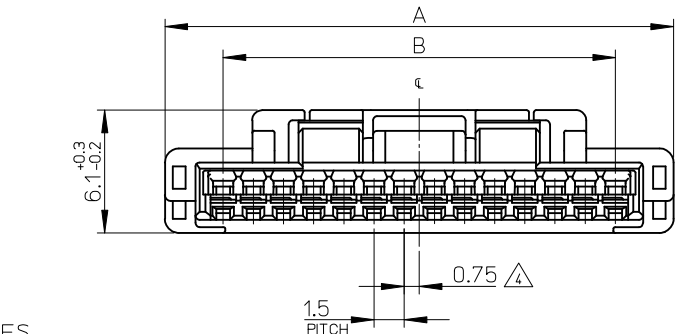
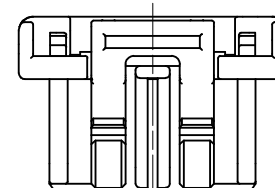
2,3極形状 (1ロック)
FIGURE OF 2.3 CIRCUIT (1 LOCK)



4,5極形状 (1ロック)
FIGURE OF 4.5 CIRCUIT (1 LOCK)



6極形状 (2ロック)
FIGURE OF 6 CIRCUIT (2 LOCK)



NOTES

1. 材料 MATERIAL
ハウジング : PBT , UL94-V0
HOUSING : PBT , UL94-V0
2. 嵌合相手 : 502584,502585,503159,503175,503339,503340,503395 シリーズ
MATE WITH : 502584,502585,503159,503175,503339,503340,503395 SERIES.
3. 適合ターミナル : 502579, 503429 シリーズ
APPLICABLE TERMINAL : 502579, 503429 SERIES.

△ 極数/2=偶数極の場合に適用
APPLY FOR (CIRCUIT/2)=EVEN

△ 注文番号
ORDER No.

502578 - * * * * *



6. 本製品のプラスチック部に黒点・白点等が確認される場合や色合いが異なる場合がありますが、製品性能に影響はありません。
THERE IS NO INFLUENCE IN THE PRODUCT PERFORMANCE THOUGH THE BLACK AND WHITE SPOT ETC. MIGHT BE CONFIRMED TO THE PLASTIC PART OF THIS PRODUCT AND THE SHADE MIGHT BE DIFFERENT.
7. アプリケーション仕様書(コネクタ取扱説明書) : AS-502578-001, AS-502578-002
APPLICATION SPECIFICATIONS (CONNECTOR MANUAL): AS-502578-001, AS-502578-002
8. 製品仕様書 : PS-502584-001
Product specification: PS-502584-001

△ トレードマーク : MX プラス1文字の製造工場を示すアルファベットにて表示。但し"J"は JAPAN を示す。(例 MXJ)

キャビティ番号 : 1桁から2桁の数字にて表示。
金型番号 : アルファベット1文字にて表示。

FORMED BY MX AND 1 MORE LETTER OF ALPHABET WHICH MEAN THE MANUFACTORY. BUT "J" MEANS JAPAN. (TO TRADE MARK) (e.g. MXJ) AND BY 1 - 2 DIGIT NUMBER (TO CAVITY No.) AND BY 1 LETTER OF ALPHABET (TO MOLD No.)

10. ELV 及び RoHS 適合品
ELV AND RoHS COMPLIANT

No.	COLOR	CIRCUIT	
00	ベージュ BEIGE	2~15	
01	黒 BLACK		
02	赤 RED		
03	黄 YELLOW		
04	青 BLUE		
05	桃 PINK		
06	緑 GREEN		
07	茶 BROWN		
08	橙 ORANGE		
09	紫 VIOLET		
14	水 PALE BLUE		2

21	26.8	502578-15**	15	
19.5	25.3	↑	-14**	14
18	23.8		-13**	13
16.5	22.3		-12**	12
15	20.8		-11**	11
13.5	19.3	-10**	10	
12	17.8	-09**	9	
10.5	16.3	-08**	8	
9	14.8	-07**	7	
7.5	13.3	-06**	6	
6	11.8	-05**	5	
4.5	10.3	-04**	4	
3	8.8	-03**	3	
1.5	7.3	502578-02**	2	
B	A	PLASTIC BAG	CIRCUIT No.	
		△ ORDER No.		

REVISED EC NO.: J2009-2139 DRW:KSETO 2009/03/23 CHKD:KASAKAWA 2009/03/24 APPR: S ICHIKAWA 2009/03/24	GENERAL TOLERANCES (UNLESS SPECIFIED)		DIMENSION STYLE MM ONLY		SCALE 4:1	DESIGN UNITS METRIC		THIRD ANGLE PROJECTION	
	10 UNDER	±0.2	DRAWN BY N. ITO	DATE '07/07/09	TITLE 1.5MM W/B CONN. SINGLE PLUG HOUSING				
	10 OVER 30 UNDER	±0.25	CHECKED BY K. ASAKAWA	DATE '07/07/10	MOLEX INCORPORATED				
	30 OVER	±0.3	APPROVED BY Y. ITO	DATE '07/07/10					
ANGULAR ±3 °	DRAFT WHERE APPLICABLE MUST REMAIN WITHIN DIMENSIONS		MATERIAL NO. SEE TABLE		DOCUMENT NO. SD-502578-001		SHEET NO. 1 OF 1		
SIZE A3 THIS DRAWING CONTAINS INFORMATION THAT IS PROPRIETARY TO MOLEX INCORPORATED AND SHOULD NOT BE USED WITHOUT WRITTEN PERMISSION									