

DC-AC INVERTER UNIT

CXA-0384 (8 W DUAL OUTPUTS WITH DIMMING FUNCTION)

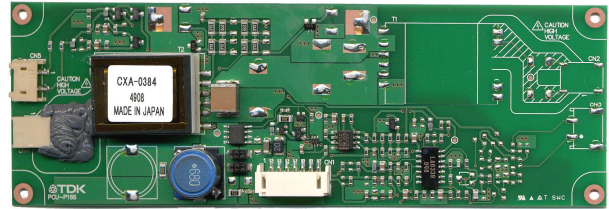
(PRELIMINARY INFORMATION)

DESCRIPTION :

This low profile DC to AC Inverter is developed for Dual lamps, low power LCD back-light.

APPLICABLE LCD:

- AA150XN01 (MITSUBISHI)
- T-351863D150-FW-A-AA (OPTREX)
- 6.4 to 15 inches Dual lamp type
- Lamp Voltage 600 Vrms
- Lamp Current 6.5 mArms
- Lamp Start Up Voltage 1.600 Vrms (Vin : 12.0 Vdc)



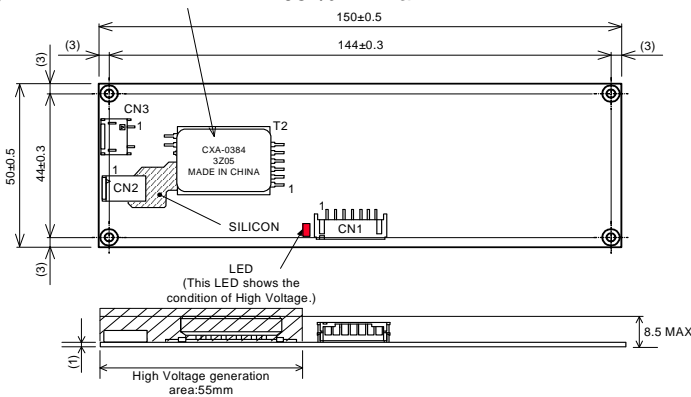
FEATURES :

- Dimming function PWM
- Remote ON/OFF
- Open Lamp Detection

TEMPERATURE & HUMIDITY :

- Operating Temperature Range 0°C ~ +70°C
- Storage Temperature Range -30°C ~ +85°C
- Humidity 95 %RH max

DIMENSIONS :



Unit : mm
Weight :43 (g) typ.

Components

No.	Part Discription	Qty.	Material	Note
1	PWB	1	ComPOSITE (CEM-3)	t=1mm
2	Connector CN1	1	S7B-PH-SM3	JST or equal
3	Connector CN2	1	SM02B-BHSS-1-TB	JAE or equal
4	Connector CN3	1	SM02(4.0)B-BHS-1-TB	JST or equal

Input side CN1:

Pin No.	Symbols	Ratings
CN 1-1~2	Vin	10.8 ~ 13.2 Vdc
CN 1-3~4	GND	
CN 1-5	Vbr / Rbr	0 ~ 2.5 Vdc / 0 ~ 50 kΩ
CN 1-6	Vst	0 / 5.0 Vdc
CN 1-7	Vrmt	0 ~ 0.4 Vdc: Off 2.5 ~ Vin: On

Output side CN2

Pin No.	Symbols	Ratings
CN 2-1	Vhigh1	600 Vrms (6.5 mArms)
CN 2-2	Vhigh2	600 Vrms (6.5 mArms)

Output side CN3

Pin No.	Symbols	Ratings
CN 3-1	Vlow1	(GND)
CN 3-2	Vlow2	(GND)

Power Systems – The Power Solution

Web: www.Power-Systems.de
Email: Info@Power-Systems.de

Address: Dörnet 8 ; 74360 Ilsfeld-Auenstein / Germany
Tel. : + 49 / 70 62 / 67 59 - 6
Fax: + 49 / 70 62 / 67 59 - 80

DC-AC INVERTER UNIT

CXA-0384 (8 W DUAL OUTPUTS WITH DIMMING FUNCTION)

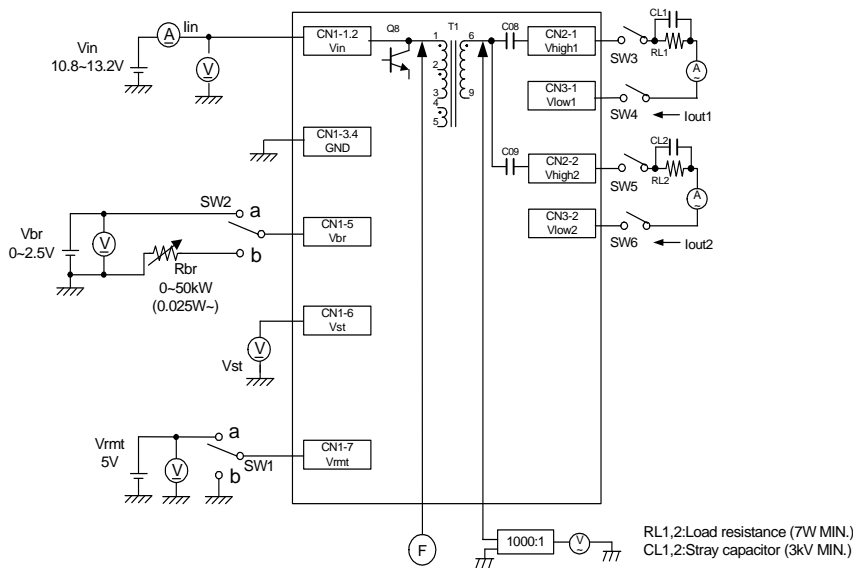
(PRELIMINARY INFORMATION)

ELECTRICAL CHARACTERISTICS :

Parameters	Symbols	Conditions				Specification			Unit	Note
		Vin (V)	Vrmt (V)	Vbr (V)	Tu (°C)	Min.	Typ.	Max.		
Output Current	lout1	12.0±1.2	5±0.05	0	0 ~ +70	6.0	6.5	7.0	mArms	Max
Output Current	lout2	12.0±1.2	5±0.05	2.5	0 ~ +70	2.3	3.0	3.7	mArms	Max
Input Current	lin1	12.0±1.2	5±0.05	0	0 ~ +70	-	0.9	1.0	Adc	
Input Current	lin2	12.0±1.2	0	0 ~ 2.5	0 ~ +70	-	-	1	mAdc	Remote Off
Frequency	F1	12.0±1.2	5±0.05	0	0 ~ +70	45	50	55	kHz	
Frequency (Duty)	F2	12.0±1.2	5±0.05	2.5	0 ~ +70	240	270	300	Hz	
Open Circuit Voltage	Vopen	12.0±1.2	5±0.05	0	0 ~ +70	1.500	1.600	-	kVrms	
		12.0±1.2	5±0.05	0	0 ~ +70	0.0	0.1	0.5	Vdc	Normal
Alarm Signal	Vst	12.0±1.2	5±0.05	0 ~ 2.5	0 ~ +70	4.5	5.1	5.5	Vdc	operation Alarm Signal

Note 1 : Please keep minimum of 2mm clearance (all directions) between inverter high voltage area as marked on mechanical drawing and any conductors.

TEST CIRCUIT :



SW1	Operation of Unit
a	Operation
b	Non Operation
OPEN	Non Operation

SW2	Operation of Unit
a	Voltage dimming Vbr=0~2.5V (Vbr=0V : Max Brightness)
b	Variable resistance dimming Rbr=0~50kΩ (Rbr=0Ω : Max Brightness)

Power Systems – The Power Solution

Web: www.Power-Systems.de
 Email: Info@Power-Systems.de

Address: Dörnet 8 ; 74360 Ilsfeld-Auenstein / Germany
 Tel. : + 49 / 70 62 / 67 59 - 6
 Fax: + 49 / 70 62 / 67 59 - 80