

# Monolithic crystal filter

## MQF130...180-1500/B



### Application

- 6 pol filter
- antenna filter
- use in mobile and stationary transceivers

### Limiting values

		Unit	Value
Nominal frequency	$f_0$	MHz	130.0...180.0
Insertion loss		dB	< 8.0
Pass band at 3.0dB		kHz	$\pm > 7.5$
Ripple in pass band	$f_0 \pm 5$ kHz	dB	< 1.0
Stop band attenuation	$f_0 \pm 25$ kHz	dB	> 20
	$f_0 \pm 60$ kHz	dB	> 60
Alternate attenuation		dB	> 60 except spurious
Spurious responses	$> f_0 + 60$ kHz	dB	> 40

Note: The nominal frequency  $f_0$  is determined by customer

Terminating impedance Z

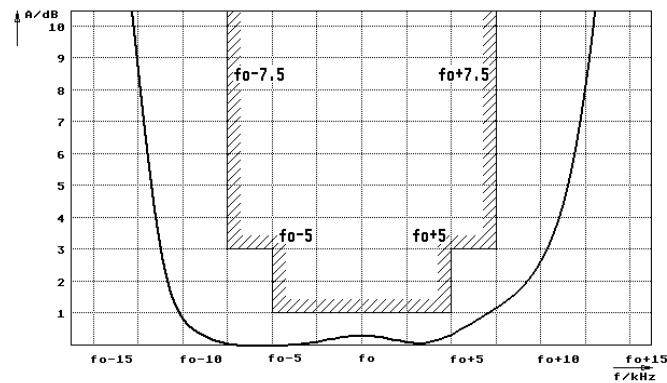
R1  C1	Ohm/pF	50    0
R2  C2	Ohm/pF	50    0

Operating temp. range

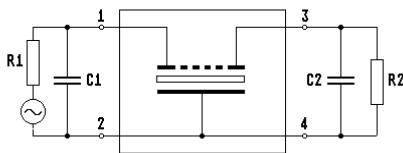
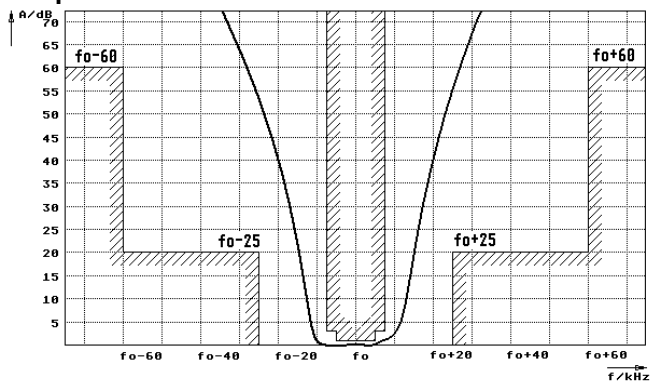
°C -20... +70

### Characteristics MQF130...150-1500/B

#### Pass band



#### Stop band



- Pin connections:
- 1 Input
  - 2 Ground-Input
  - 3 Output
  - 4 Ground-Output

