

DIMENSIONS IN INCHES (MILLIMETERS)  
DO NOT SCALE DRAWING

Dwg. No.

GC-536BQ-0400

**SPECIFICATIONS:**

**MATERIALS:**

HOUSING & BASE - Nylon and or Glass Filled  
Nylon 6/6 UL 94-V2 minimum

ACTUATOR - Delrin UL 94-HB minimum

MOVING CONTACT - Copper Alloy/Phos. Bronze Silver Plated

STATIONARY CONTACT - BeCu 174 Alloy/75µin. Silver Plated

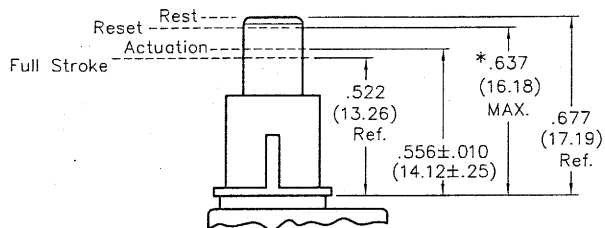
ELECTRICAL RATING - 1A. 125V.A.C.  
3A. 14V.D.C.

MECHANICAL PERFORMANCE - 30,000 Cycles minimum  
at Rated Load.

② OPERATING FORCE - 15 - 22 ozs. Typical,  
4.2 - 6.1 Newtons Typical,

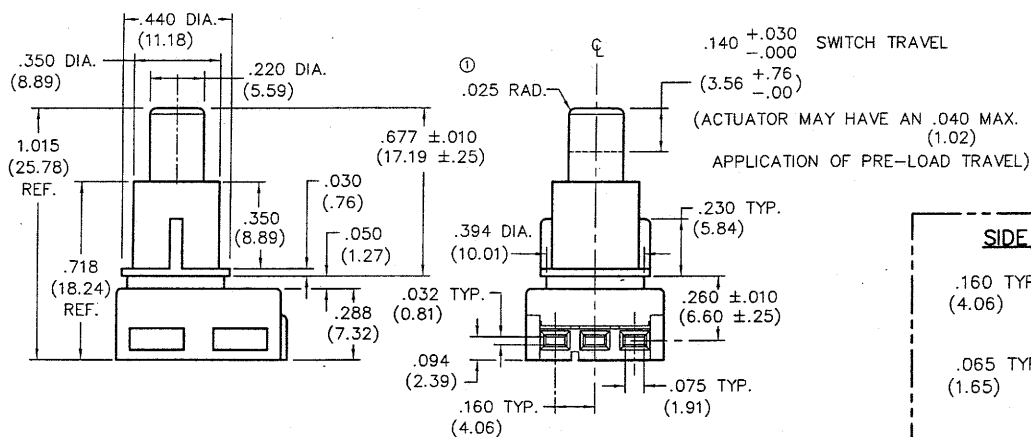
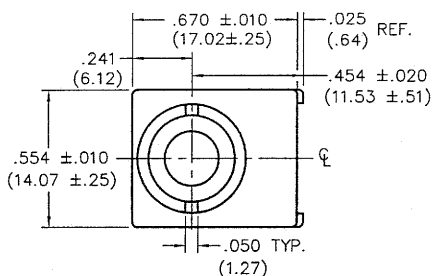
VOLTAGE DROP - .030V. MAX @ .7A

TERMINATION - Insert male tabs into switch housing  
using side termination. Refer  
to termination layout for dimensions."

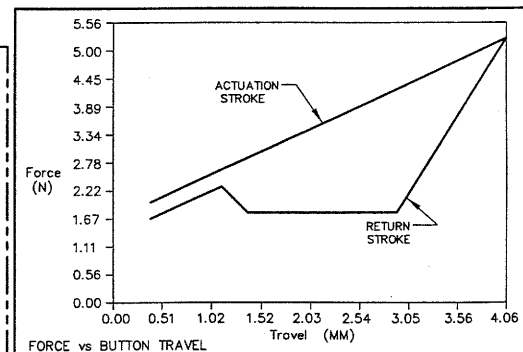
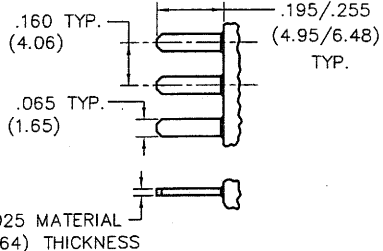


**SWITCH TRAVEL SPECIFICATIONS**

\* Mating Part can Pre-Load Actuator  
down to .637 (16.18) max..



**SIDE TERMINATION LAYOUT**



FORM-B3	1	2	3	4	5	6	7	8	9	10
<b>REVISIONS</b>	0	1	2							
RELEASED. DGW 11-19-2007 CH NOV. 19, 2007	ADDED .025 RAD. TO TOP OF BUTTON. DGW 3-03-2008	OPERATING FORCE RANGE 15-22 ozs. (4.2-6.1 N) WAS 17-24 ozs. (4.6-6.6 N). BWF 3-14-2008								
		<b>GG</b>								
		<b>MAR 14 2008</b>								

PDF File Made	<b>CW INDUSTRIES</b> Southampton, Pa. 18966	Title: <b>QUIET SWITCH ASSEMBLY</b>	
	TOLERANCES UNLESS OTHERWISE SPECIFIED	<b>PUSH ON-PUSH OFF S.P.D.T. W/RIBS</b>	
	2 Place Decimal ±.010 METRIC	Division: <b>SWITCH</b>	
	3 Place Decimal ±.005	1 Place Dec. ±.25mm	Dwg. No. <b>GC-536BQ-0400</b>
	Angles ..... ±1'	2 Place Dec. ±.13mm	
Made for: CW IND.	Drawn by: DGW 11-19-2007	Checked by: <b>G. Guld 3-14-08</b>	
Approval: <i>[Signature]</i> 3-14-08			

**MASTER**