



TAI-SAW TECHNOLOGY CO., LTD.

No. 3, Industrial 2nd Rd., Ping-Chen Industrial District,
Taoyuan, 324, Taiwan, R.O.C.

TEL: 886-3-4690038 FAX: 886-3-4697532

E-mail: tstsales@mail.taisaw.com Web: www.taisaw.com

Approval Sheet For Product Specification

Issued Date:

Product Name: SAW Filter 280 MHz for WLAN

TST Parts No.:TB0137A

Customer Parts No.:_____

Company:_____
Division:_____
Approved by :_____
Date:_____

Checked by:_____ Andy Lee

Approval by:_____ Francis Chen

Date:_____ 2003/3/18



TAI-SAW TECHNOLOGY CO., LTD.

No. 3, Industrial 2nd Rd., Ping-Chen Industrial District,
Taoyuan, 324, Taiwan, R.O.C.

TEL: 886-3-4690038 FAX: 886-3-4697532

E-mail: tstsales@mail.taisaw.com Web: www.taisaw.com

SAW Filter 280 MHz for WLAN

MODEL NO.: TB0137A

REV. NO.:2

A. MAXIMUM RATING:

RoHS Compliant
Lead free
Lead-free soldering

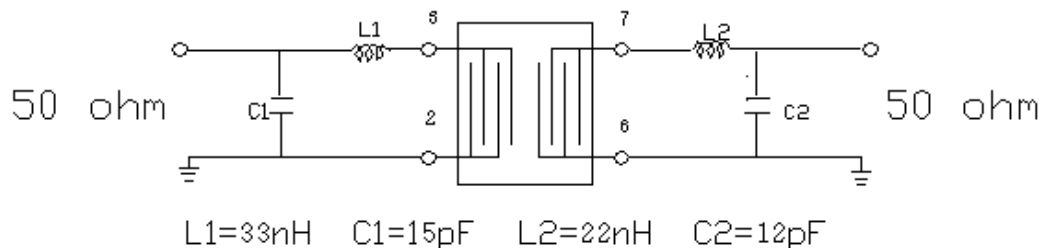
1. Input Power Level: 10 dBm
2. Operating Temperature: -10°C to 85°C
3. Storage Temperature: -40°C to 85°C

B. ELECTRICAL CHARACTERISTICS :

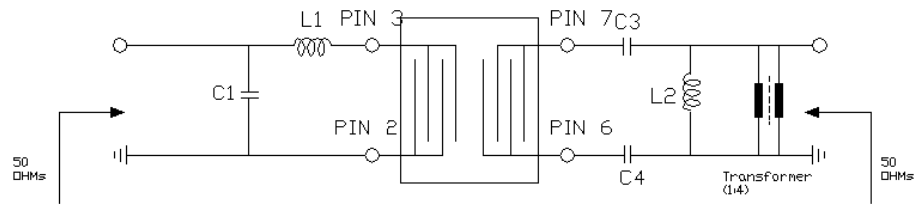
Item	Unit	Min.	Type.	Max.	Note
Center frequency, F_c	MHz	-	280	-	
Insertion Loss, IL	dB	-	8.3	10	
Passband width, BW_3	MHz	18.5	19.8	23	
Amplitude Ripple in $F_c \pm 9\text{MHz}$	dB	-	2	3	
Group delay ripple in $F_c \pm 9\text{MHz}$	nS	-	60	100	
Attenuation:(Reference level from Min IL)					
$F_c -60$ to -40MHz	dB	40	46	-	
$F_c -40$ to -22MHz	dB	37	39	-	
$F_c -22$ to -16MHz	dB	30	39	-	
$F_c +16$ to $+22\text{MHz}$	dB	25	33	-	
$F_c +22$ to $+40\text{MHz}$	dB	34	36	-	
$F_c +40$ to $+60\text{MHz}$	dB	40	45	-	

C. MATCHING CONFIGURATION:

1. For Single End In, Single End Out



2.For Single End In, Balance Out



C1=15pF C2=75pF
 C3=68pF
 L1=33nH L2=27nH

D. FREQUENCY CHARACTERISTICS(For Single Un ,Balance out Type):

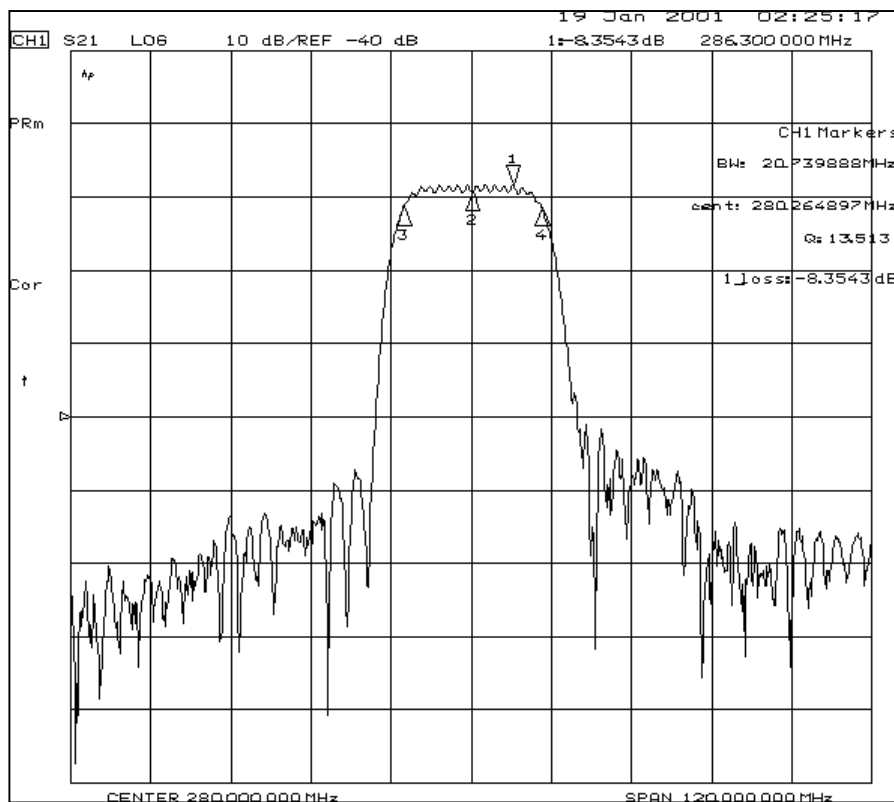


Fig-1 S21 Response

Note2: Insertion loss of balun transformers is around -0.7dB.

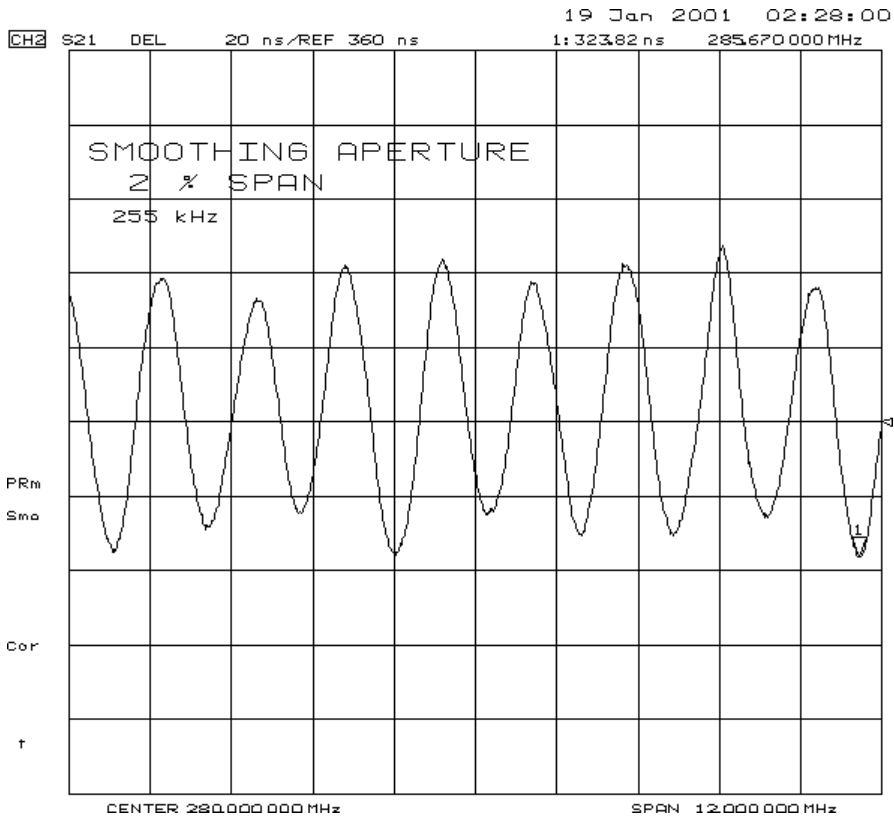
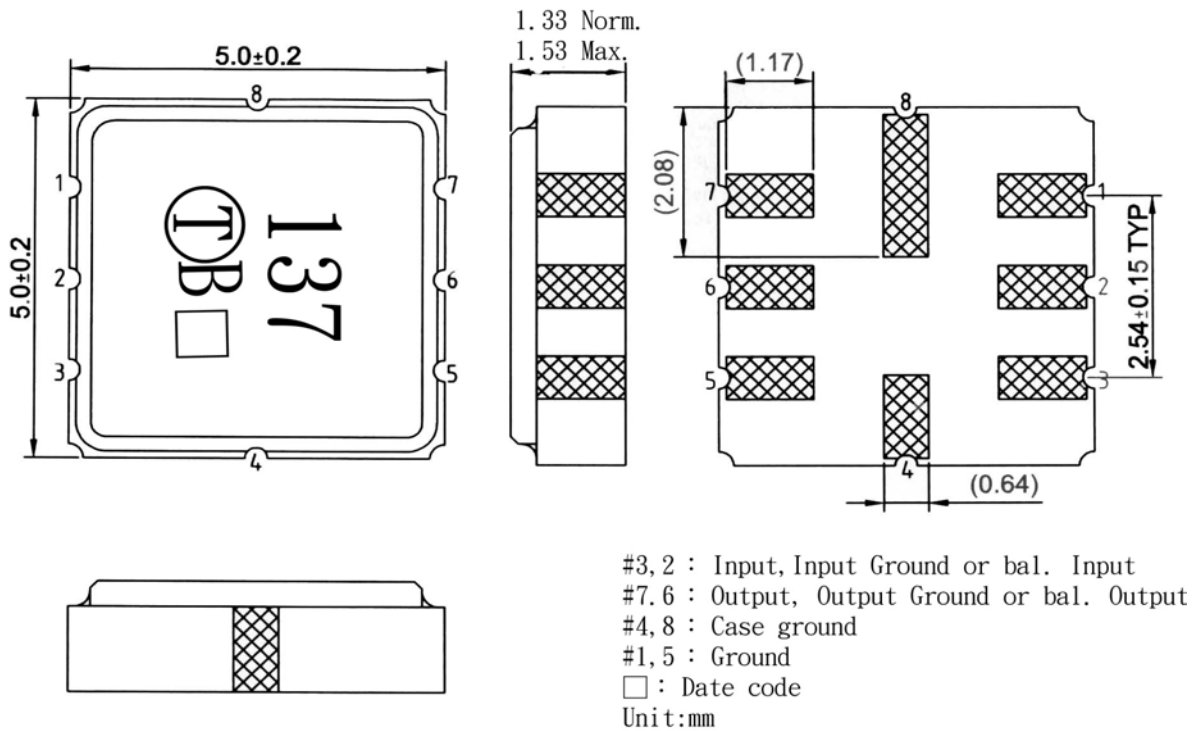


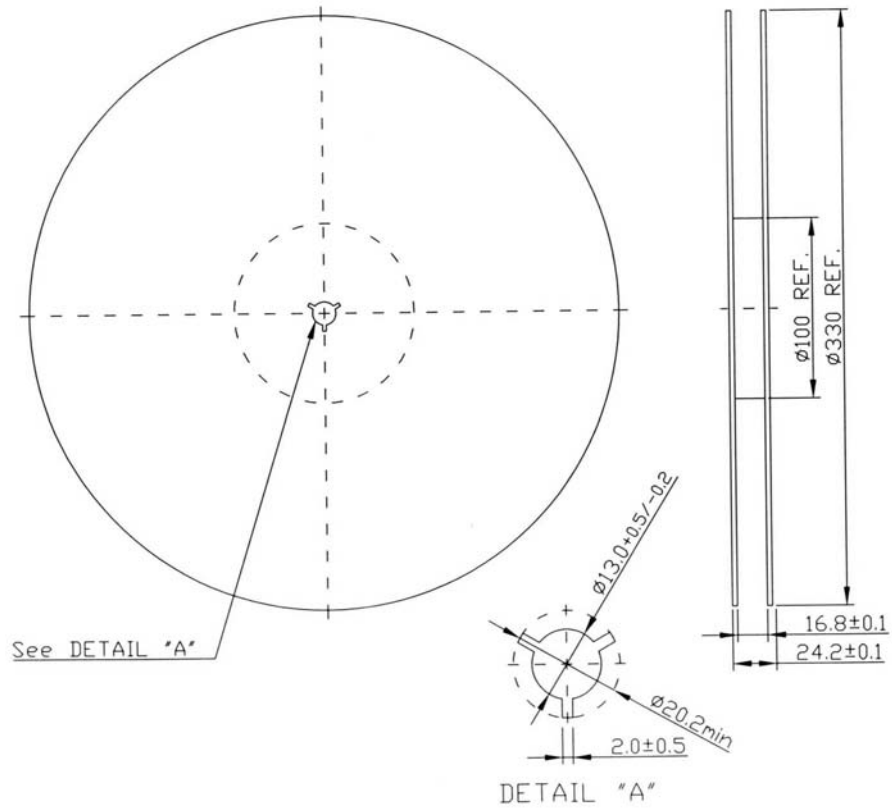
Fig-2 Group Delay

E. OUTLINE DRAWING:

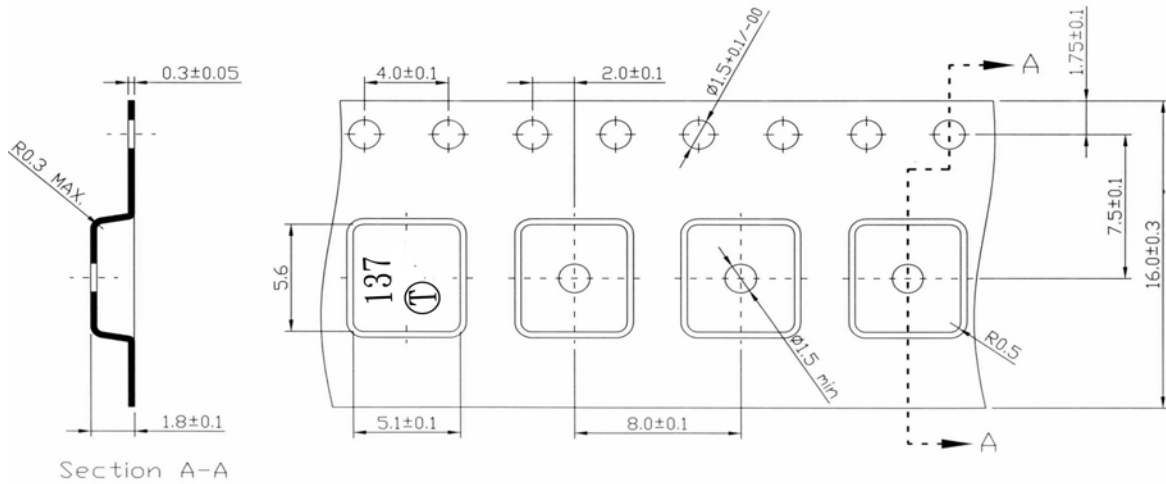


F. PACKING:

1. REEL DIMENSION



2. TAPE DIMENSION



$A_0 = 5.30 \pm 1$ mm

$B_0 = 5.30 \pm 0.2 / -0.0$ mm

$K_0 = 2.0 \pm 0.1$ mm