

WM72016-6-EVAL-915-ANT

Evaluation Board for 16Kbit Wireless Memory with Serial Port



FEATURES

For a full list of features, please refer to the WM72016 datasheet.

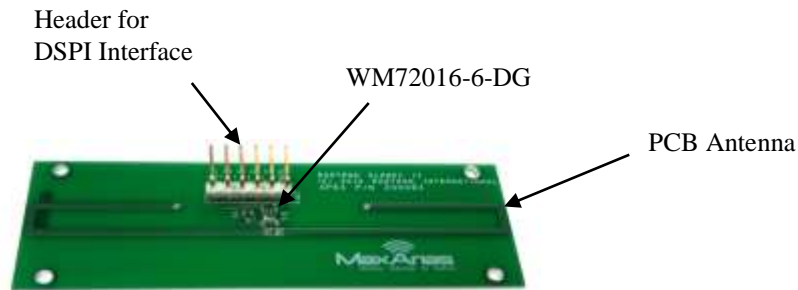
Evaluation Board Features

- Provides Access to the DSPI Interface via an Easy to Use Pin Header
- Allows the WM72016 to be Powered Either from the RF Energy or the DSPI Interface
- Antenna Tuned to 915MHz
- PCB Antenna for Low Cost

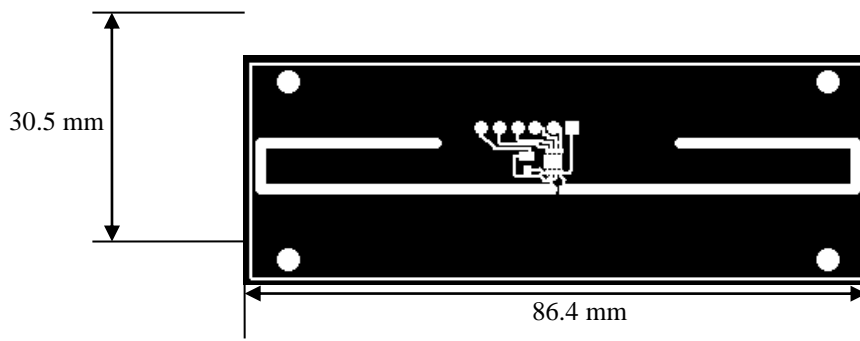
ORDERING INFORMATION

Product	Description
WM72016-6-EVAL-915-ANT	Evaluation board for the WM72016-6-DG with a 915MHz PCB antenna

DESCRIPTION



MECHANICAL DRAWINGS

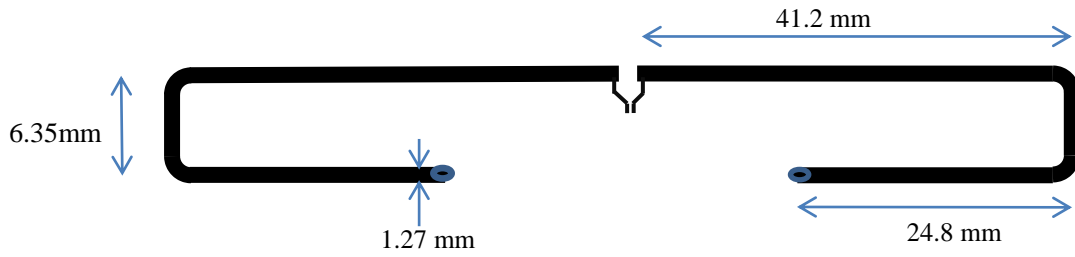


This is a product that has fixed target specifications but are subject to **change pending characterization results.**

Ramtron International Corporation
1850 Ramtron Drive, Colorado Springs, CO 80921
(800) 545-FRAM, (719) 481-7000
<http://www.ramtron.com>

PCB ANTENNA DETAILS

Dimensions are in millimeters



REVISION HISTORY

Revision	Date	Summary
0.1	10/14/2011	Initial release