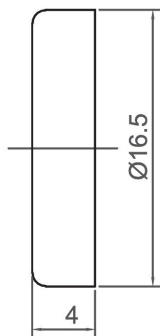
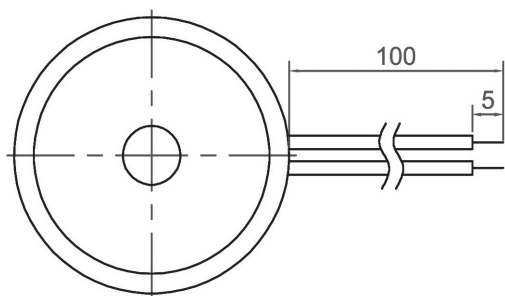
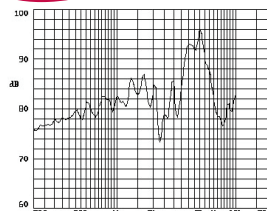


External Drive Piezo Transducer (AC)



CPT1604

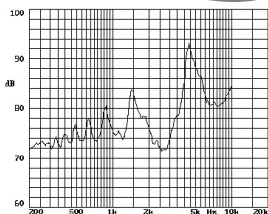
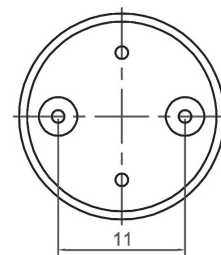
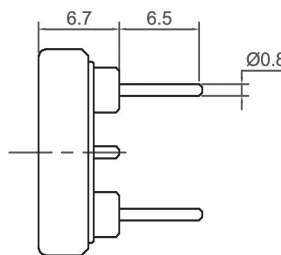
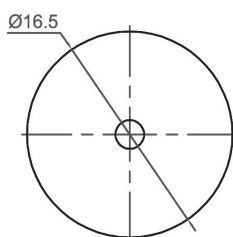


Canopus Part no.	Min sound Output (dBA)	Rated Voltage (V)	Max Input Voltage (V)	Resonant Frequency (Hz)	Capacitance (pF)	Operating Temperature (°C)	Housing	Weight (g)
CPT1604G40BW	80 AT 10cm	9 Vp-p	25 Vrms	4000	95000 ± 30% at 1000Hz	-20 ~ +60	ABS	1

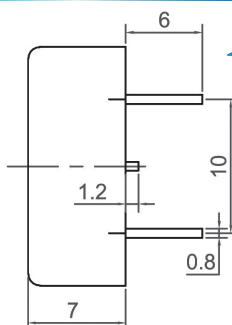
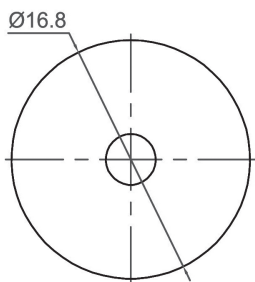
CANOPUS



CPT1607

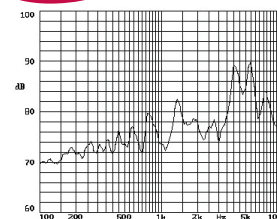


Canopus Part no.	Min sound Output (dBA)	Rated Voltage (V)	Max Input Voltage (V)	Resonant Frequency (Hz)	Capacitance (pF)	Operating Temperature (°C)	Housing	Weight (g)
CPT1607C40NP	75 AT 10cm	3 Vp-p	25 Vrms	4000	10000 ± 30% at 1000Hz	-20 ~ +60	Noryl	5



CPT1707

Canopus Part no.	Min sound Output (dBA)	Rated Voltage (V)	Max Input Voltage (V)	Resonant Frequency (Hz)	Capacitance (pF)	Operating Temperature (°C)	Housing	Weight (g)
CPT1707C20BW	75 AT 10cm	3 Vp-p	30 Vrms	2000	23000 ± 30% at 1000Hz	-20 ~ +70	ABS	1
CPT1707C28BW	80 AT 10cm	3 Vp-p	30 Vrms	2800	23000 ± 30% at 1000Hz	-20 ~ +70	ABS	1
CPT1707G40TP	80 AT 10cm	9 Vp-p	30 Vrms	4000	10500 ± 30% at 1000Hz	-20 ~ +70	PBT	3



Your Efficient Supplier
www.canopus.com.hk

TEL.: (852) 2806 2812

Fax: (852) 2652 2216