

PLEASE CHECK WWW.MOLEX.COM FOR LATEST PART INFORMATION

Part Number: [0359570310](#)
Status: **Planned for Obsolescence**
Description: 2.79mm (.110") Width Tab Receptacle Housing, 3 Circuits

Documents:

[Drawing \(PDF\)](#) [RoHS Certificate of Compliance \(PDF\)](#)
[Product Specification PS-35957-001 \(PDF\)](#)

General

Product Family Crimp Housings
 Series [35957](#)
 Product Name N/A

Physical

Circuits (maximum) 3
 Color - Resin Natural
 Gender Female
 Glow-Wire Compliant No
 Lock to Mating Part Yes
 Material - Resin Nylon
 Number of Rows 1
 Packaging Type Bag
 Panel Mount No
 Pitch - Mating Interface (in) 0.157 In
 Pitch - Mating Interface (mm) 4.00 mm
 Polarized to Mating Part Yes
 Stackable No
 Temperature Range - Operating -40°C to +105°C

Electrical

Current - Maximum per Contact 10A

Material Info

Reference - Drawing Numbers

Product Specification PS-35957-001
 Sales Drawing SD-35957-031

EU RoHS

**ELV and RoHS
Compliant**

REACH SVHC

Not Reviewed

Halogen-Free

Status

Halogen-Free

China RoHS



**Need more information on product
environmental compliance?**

Email productcompliance@molex.com
 For a multiple part number RoHS Certificate of
 Compliance, [click here](#)

Please visit the [Contact Us](#) section for any
 non-product compliance questions.

Search Parts in this Series

[35957Series](#)

Mates With

Tab Receptacle Housing [35957](#)

Use With

Quick Disconnect [35711](#)

DO NOT SCALE DRAWING
DIMENSION IN METRIC

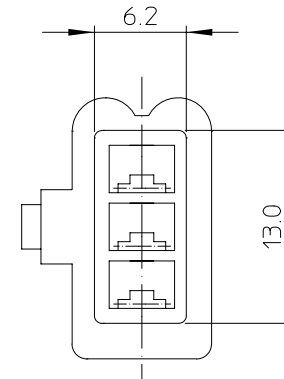
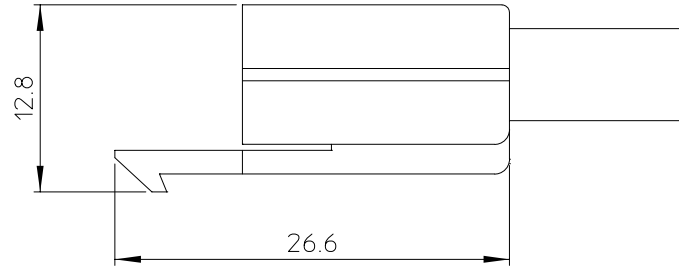
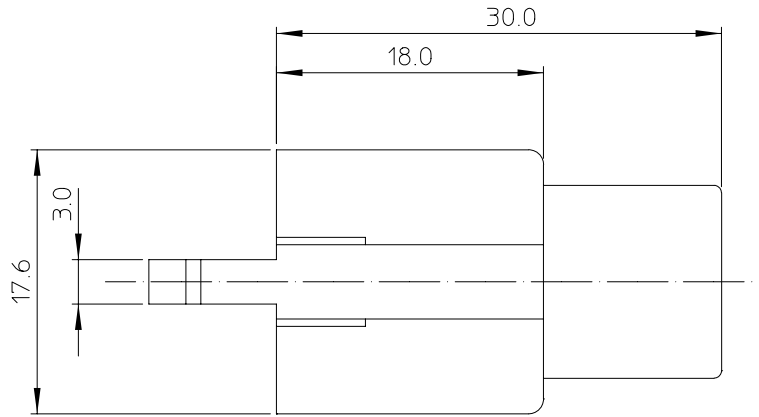
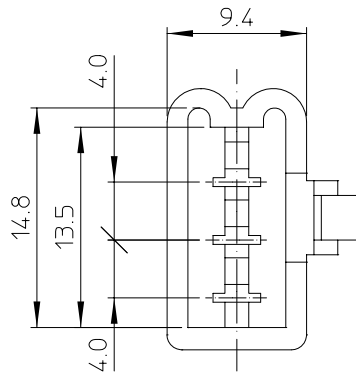
B

C

PROJECT NO.

SIMILAR ITEM

DWG. NO.
SD-35957-031



MATERIAL No.	ENG No.	MATERIAL	COLOR
359570310	35957-0310	NYLON 66	NATURAL
359570311	35957-0311	(UL94V-2)	BLACK

NOTES

1. APPLICABLE TERMINAL : 35711-02*0

F

E

D

C

B

A

REVISED ECN NO. KOR2002-0152 DRWN: C.B.CHIN 02/06/10 CHK: W.Y.YANG APPR: C.W.LEE	DESCRIPTION MAJOR =0 CRITICAL C=0	GENERAL TOLERANCES: (UNLESS SPECIFIED)		SCALE 3:1	DESIGN UNITS <input checked="" type="checkbox"/> mm <input type="checkbox"/> INCH	THIRD ANGLE PROJECTION	DIMENSIONS: <input type="checkbox"/> mm <input type="checkbox"/> INCH <input checked="" type="checkbox"/> mm ONLY		SHT	REV
		4 PLACES	±0.	±.	DRAWN BY & DATE J.S.KANG 96/04/29		TITLE: .110 W/W CONN. RECEPTACLE HOUSING-3P			
B	REV	2 PLACES	±0.30	±.	CHECKED BY & DATE B.K.CHOI 96/04/29	MOLEX INCORPORATED				
		1 PLACE	±0.30	±.	APPROVED BY & DATE C.W.LEE 96/04/29	CAD FILENAME S35957031MI	MATERIAL NO. SEE CHART	DRAWING NO. SD-35957-031	SHEET NO. 1 OF 1	SIZE B
DRAFT WHERE APPLICABLE MUST REMAIN WITHIN DIMENSIONS				THIS DRAWING CONTAINS INFORMATION THAT IS PROPRIETARY TO MOLEX INCORPORATED AND SHOULD NOT BE USED WITHOUT WRITTEN PERMISSION.						

8

7

6

5

4

3

2

KOREA

MX-A3