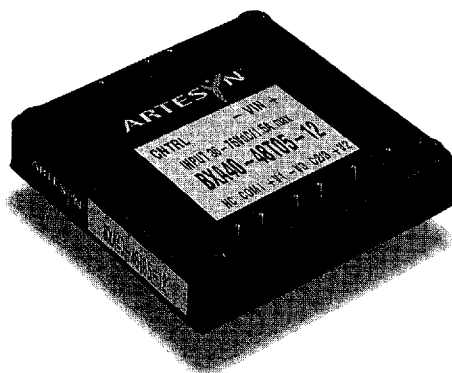


BXA40 SERIES

Triple output



[2 YEAR WARRANTY]

CE (LVD) (48V models only)

- Meets telecom power supply interface standard ETS300-132-2
- EN60950, CSA950 and UL1950 safety approvals
- EN61000-4-2, -3, -4, -5, -6 immunity compliant
- Fixed frequency operation at 400kHz
- MTBF in excess of 500,000 hours
- Basic insulation system with 1500V isolation
- Pin-compatible with NFC40 Series

The BXA40 Series providing up to 40 Watts, comprising 4 different models, has been conceived as an applications-specific range of DC/DC converters, specifically addressing telecommunications, industrial electronics, test equipment, mobile telecommunications and distributed power applications. The series offers two wide input voltage ranges, 18-36VDC and 36-75VDC, and is available with 5 \pm 12V and 5 \pm 15V triple outputs. The BXA40 series is designed to meet ETSI telecoms interface standard ETS300-132-2. With safety approval to IEC950 and basic insulation, the 48VDC models are ideal for telecommunications applications. The 24V models are particularly suited to industrial and test equipment applications, featuring EN61000-4-2, -3, -4, -5 and -6 immunity compliance. Other features include low output ripple, overvoltage protection, short circuit protection and remote enable.

SPECIFICATION

All specifications are typical at nominal input, full load at 25°C unless otherwise stated

OUTPUT SPECIFICATIONS		
Line regulation (See Note 2)	Main output Auxiliary output	$\pm 0.5\%$ $\pm 2.0\%$
Load regulation (See Note 3)	Main output Auxiliary output	$\pm 1.0\%$ $\pm 3.0\%$ typ., $\pm 5.0\%$ max.
Load cross regulation (See Note 4)	Main output Aux. output	$\pm 1.0\%$ $\pm 3.0\%$ typ., $\pm 5.0\%$ max.
Ripple and noise 20MHz bandwidth	Main output Auxiliary output	50mV pk-pk 20mV rms 100mV pk-pk 20mV rms
Temperature coefficient		$\pm 0.02\%/^{\circ}\text{C}$
Overvoltage protection transorbs fitted	Main output Auxiliary outputs	6.8V (nom.) 16/20V (nom.)
Short circuit protection	Main output Auxiliary output, See Note 5	11A 5A
Transient response	25% to 100% load	4.0%
Voltage accuracy	Main output Auxiliary output	$\pm 1.0\%$ $\pm 3.0\%$
Minimum Load	Main output Auxiliary outputs	0.6A 0.03A/0.04A
INPUT SPECIFICATIONS		
Input voltage range	24Vin nominal 48Vin nominal	18 to 36VDC 36 to 75VDC
Reverse voltage protection	External fuse	See Note 7
Max. input rise and fall time	48V	5V/ms ETS300-132
Start-up time		30ms typ.
Remote ON/OFF Logic compatibility ON OFF		CMOS/TTL Open-circuit <1VDC

EMC CHARACTERISTICS		
Conducted emissions	EN55022, FCC part 15, See Notes 6 and 9	Level B
Radiated emissions	EN55022, FCC part 15	Level A
ESD air	EN61000-4-2, level 3	Perf. criteria 1
ESD contact	EN61000-4-2, level 4	Perf. criteria 1
Surge	EN61000-4-5, level 3	Perf. criteria 1
Fast transients	EN61000-4-4, level 3	Perf. criteria 1
Radiated immunity	EN61000-4-3, level 3	Perf. criteria 1
Conducted immunity	EN61000-4-6, level 3	Perf. criteria 1
GENERAL SPECIFICATIONS		
Efficiency		See table
Isolation voltage	Input/output Basic insulation, input/case	1500VDC 1500VDC
Switching frequency	Fixed	400kHz (typical)
Approvals and standards (pending)	Safety	EN60950, UL1950 CSA C22.2 No. 950
Case material		Aluminum substrate with plastic case
Material flammability		UL94V-0
Weight		85g typ. (3.0oz)
MTBF	MIL-HDBK-217F	500,000 hours
Size		2.2 x 2.2 x 0.5 inches 55.9 x 55.9 x 12.7 mm
ENVIRONMENTAL SPECIFICATIONS		
Thermal performance	Baseplate operating temperature Non-operating	-25°C to +105°C -55°C to +105°C
Thermal impedance See Note 8	No air flow, no heatsink No air flow, with heatsink	8.5°C/W 7.2°C/W

40 Watt Wide input DC/DC converters

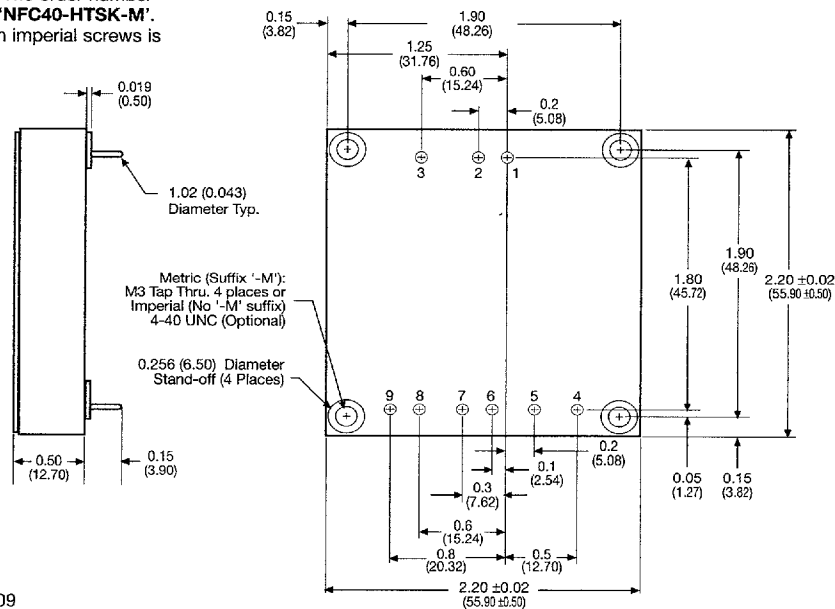
INPUT VOLTAGE	OUTPUT VOLTAGE	OUTPUT CURRENT (MAX.)	INPUT CURRENT (1)	TYPICAL EFFICIENCY	MODEL NUMBER (1)
18-36VDC	5V/±12V	6A/±0.4A	50mA	83%	BXA40-24T05-12-M
18-36VDC	5V/±15V	6A/±0.3A	50mA	83%	BXA40-24T05-15-M
36-75VDC	5V/±12V	6A/±0.4A	30mA	83%	BXA40-48T05-12-M
36-75VDC	5V/±15V	6A/±0.3A	30mA	83%	BXA40-48T05-15-M

Notes

- 1 Nominal line, at no load.
- 2 Nominal line to high line, nominal line to low line.
- 3 Load regulation:
Main output (V1): 25 to 100% with 25% to 100% balanced on auxiliaries.
Auxiliary outputs (V2 and V3): 25% to 100% balanced on all outputs.
- 4 Cross regulation:
Main output 100% load, auxiliary 100%, other auxiliary 25% to 100%.
Auxiliary outputs (V2 and V3): main output 100% load, auxiliary 100%,
other auxiliary 25% to 100% or main output 25%, auxiliary 25%, other
auxiliary 25% to 100%.
- 5 Short circuit protection, ≤ 1 minute on auxiliary outputs.
- 6 For EMI compliance to EN55022 level B please consult factory for details.
- 7 For EMI compliance to EN55022 level A, refer to BXA40 Design Note 101.
- 8 Reverse voltage protection, refer to BXA40 Design Note 101.
- 9 The maximum operating ambient temperature, without derating depends
on internal power dissipation and module efficiency and cooling method.
**Contact your local distributor or the Artesyn Technologies web-site
for a copy of BXA40 Design Note 101 which provides detailed thermal
calculations and design-in hints.**
- 10 An external filter capacitor is necessary for safe operation of the 24V input
models. It is also suggested that an external filter capacitor be used on
the 48V input models. A 4 μ F (or greater) film capacitor such as: ITW
Paktron Capctisk series, part number 405K100CS4 4 μ F/100V is
recommended, if filtering is not used. See BXA40 Design Note 101.
- 11 Units with the suffix '-M' at the end of the model number are offered as
standard with metric threaded inserts (M3). To order units with imperial
threaded inserts (4-40 UNC) please remove the suffix '-M' from the model
number. These inserts are used for bolting the unit to a PCB and/or fixing
heatsinks.
- 12 A top mounted heatsink kit is available for the BXA40. The heatsink may
be oriented parallel to or perpendicular to the direction of the pins, thus
providing optimum flexibility for cooling requirements. The order number
for the top mounted heatsink kit with metric screws is '**NFC40-HTSK-M**'.
The order number for the top mounted heatsink kit with imperial screws is
'**NFC40-HTSK-I**'.

PIN CONNECTIONS

PIN NUMBER	TRIPLE OUTPUT
1	+ Input
2	- Input
3	Control
4	+ Output (V2)
5	Common
6	- Output (V3)
7	+ Output (V1)
8	- Output (V1)
9	No Connection



International Safety Standard Approvals



VDE0805/EN60950/IEC950 File No. 14501-3336-7009
Licence No. 6296



UL1950 File No. E174104



CSA C22.2 No. 950 File No. LR41062C

BOTTOM VIEW

ALL DIMENSIONS IN INCHES (mm)

TOLERANCE : ± 0.004 (0.1)
unless otherwise specified