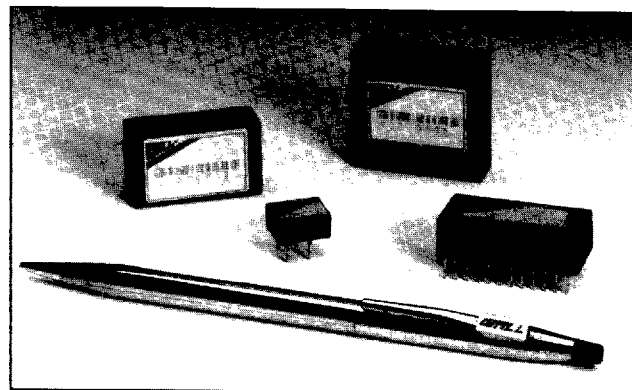


LAN Series to 2 Watts

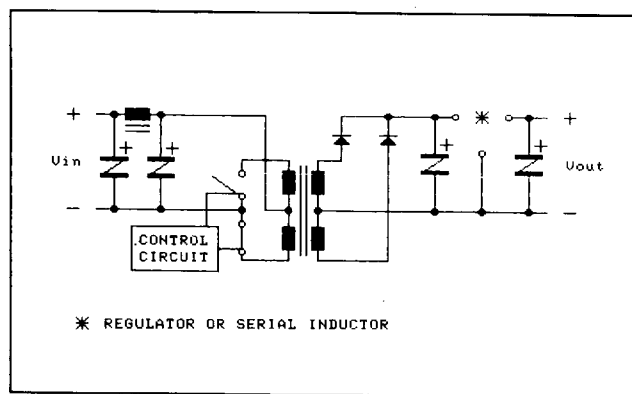
FEATURES

- Choice of 4 Different Package Sizes
- Regulated and Unregulated Outputs
- Short Circuit Protection
- Isolation Voltage to 2500 VDC
- IEEE 802.3 LAN Compatible
- Pi-Input Filter



The LAN Series from Wall Industries

The new LAN Series of DC/DC Converters offers up to 2 watts of output power from 4 different package/pin-out configurations. The LAN Series is intended to provide power and isolation for local area network (LAN) transceiver chips. The LAN Series covers Ethernet, Cheapernet or Starlan local area network applications.



SPECIFICATIONS

All specifications apply @ + 25°C ambient unless otherwise noted.

INPUT SPECIFICATIONS

Input Voltage Range ± 10% VDC
Input Filter . . . Pi-input filter for LAN-A, LAN-B and LAN-C models

OUTPUT SPECIFICATIONS

Output Voltage Current see table
Output Voltage Tolerance ± 5% (nominal line and full load)
Ripple/Noise (Typical) LAN-A: 40mV P-P
 LAN-B/C: 50mV P-P
 LAN-D: 200mV P-P
Line Regulation see table
Load Regulation see table
Short Circuit Protection momentary

GENERAL SPECIFICATIONS

Efficiency see table
Isolation Voltage, input to output LAN-A: 2500 VDC

Switching Frequency 20KHz, minimum

ENVIRONMENTAL SPECIFICATIONS

Operating Temperature (case temp) LAN-A: -25°C - +85°C
Storage Temperature LAN-A: -40° - +125°C
 LAN-B/C/D: -25° - +125°C
Humidity 20% - 95% R.H. (non-condensing)

PHYSICAL SPECIFICATIONS

Dimensions LAN-A: 1.33 x 1.33 x 0.5"
 LAN-B: 1.27 x 0.58 x 0.4"
 LAN-C: 1.25 x 0.8 x 0.40"
 LAN-D: 0.5 x 0.4 x 0.28"
Case Material non-metallic

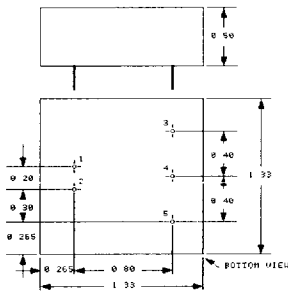
Specifications subject to change without notice.



SINGLE OUTPUT

LAN Series

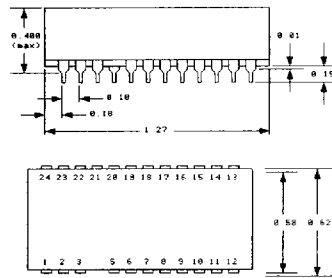
INPUT VOLTAGE (VDC)	OUTPUT VOLTAGE (VDC)	OUTPUT CURRENT (mA)	EFFICIENCY 'TYPICAL' (%)	REGULATION 'TYPICAL'		MODEL NUMBER
				± Line %	± Load %	
5	9	250	50	0.5	0.5	LANA509
5	12	200	50	0.5	0.5	LANA512
5	5	300	42	0.5	0.5	LANB505R
5	9	170	50	0.5	0.5	LANB509R
5	9	250	75	1.2	8.0	LANB509N
5	12	125	50	0.5	0.5	LANB512R
5	15	100	50	0.5	0.5	LANB515R
5	5	300	50	0.5	0.5	LANC505R
5	9	170	60	0.5	0.5	LANC509R
5	9	250	75	1.2	8.0	LANC509N
5	12	125	60	0.5	0.5	LANC512R
5	15	100	60	0.5	0.5	LANC515R
5	5	200	65	1.2	8.0	LAND505N
5	9	140	75	1.2	8.0	LAND509N
5	12	100	75	1.2	8.0	LAND512N
5	15	85	75	1.2	8.0	LAND515N
12	9	250	50	0.5	0.5	LANA1209
12	12	200	50	0.5	0.5	LANA1212
12	5	300	42	0.5	0.5	LANB1205R
12	9	200	50	0.5	0.5	LANB1209R
12	9	250	75	1.2	8.0	LANB1209N
12	12	125	50	0.5	0.5	LANB1212R
12	15	100	50	0.5	0.5	LANB1215R
12	5	300	50	0.5	0.5	LANC1205R
12	9	170	60	0.5	0.5	LANC1209R
12	9	250	75	1.2	8.0	LANC1209N
12	12	125	60	0.5	0.5	LANC1212R
12	15	100	60	0.5	0.5	LANC1215R
12	5	200	65	1.2	8.0	LAND1205N
12	12	100	75	1.2	8.0	LAND1212N
12	15	85	75	1.2	8.0	LAND1215N



LAN-A

Pin Functions:

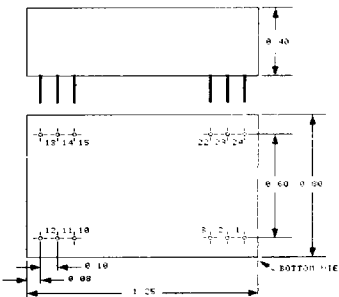
- LAN-A
- 1. + Vin
- 2. - Vin
- 3. N/C
- 4. + Vout
- 5. - Vout



LAN-B

Pin Functions:

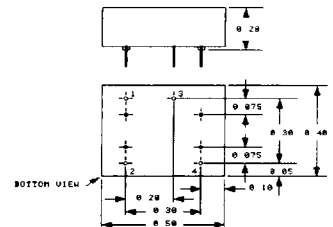
- LAN-B
- 1 & 24 + Vin
- 12 & 13 - Vin
- 11 & 14 + Vout
- 10 & 15 - Vout



LAN-C

Pin Functions:

- LAN-C
- 1 & 24 + Vin
- 2 & 23 N/C
- 3 & 22 N/C
- 10 & 15 -Vout
- 11 & 14 + Vout
- 12 & 13 -Vin



LAN-D

Pin Functions:

- LAN-D
- 1. +Vout
- 2. +Vin
- 3. -Vout
- 4. -Vin

Notes

1. All case and pin to case dimensions are reference only unless otherwise noted.



9564164 0000253 T9T

2