

Premia 9

CONTROL SYSTEM

Remote Keypad

This stylish unit has been designed to blend in with any environment, and as such will not look out of place in any domestic or commercial premises. The front cover pulls down to reveal a tactile, backlit keypad designed with ease of operation as its overriding feature. A clear and concise user interface with setting option buttons and a twin seven segment LED display, combines with a separate overlay to aid engineer programming and ensure ease of operation. The unit also contains built in double push fire and panic alarm buttons, and connections for push to set and Zone 1 inputs to simplify system configuration.

Intelligent Auto-Rearm

After an alarm activation any zones which are closed will again be included in the system. A second activation of that zone will not operate the external bell/sounder output. Third and subsequent activations will then only operate the strobe and communicator outputs. A full alarm will however be generated should a previously unviolated zone be activated.

Graduated Alarm Response

If an alarm condition is generated while the system is part set, an initial low volume audible alarm will be generated, which will escalate to a full alarm over a 30 second period. If, however, during this period a second zone is violated, the alarm will immediately escalate to full.

The above two features have been designed to reduce the possibility of false alarms causing a nuisance both to other residents and the police force, who may refuse to respond to alarms with a history of false activation.

Flexible Zone Allocation

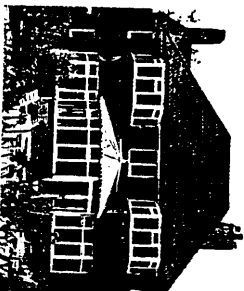
Each of the Premia 9's eight programmable zones can be programmed as any of the following: Intruder, Panic, Exit/Entry, Entry Route, Jamper, Fire, Test or Disabled. In addition, any zone or combination of zones can be programmed to any of the three setting levels incorporated within the Premia 9.

General Features

- Steel endstation and remote keypad
- 8 fully programmable zones
- Three setting levels plus zone omit
- 'Smart' proximity key control
- Flexible Zone Allocation
- Engineer Friendly Programming System
- Flexible 'Lifestyle' Entry Zones
- Comprehensive event memory (124 events)
- Three Communicator Outputs

The SmartKey

- Will last indefinitely
- Requires no batteries
- Cannot be copied
- Is coded with one of 16 million combinations
- If lost, can easily be removed from the alarm system



- Intelligent Auto-Rearm
- Graduated Alarm Response
- Sensible Default Configurations
- Double Pole or End of Line Operation

Introducing the CQR Smartkey

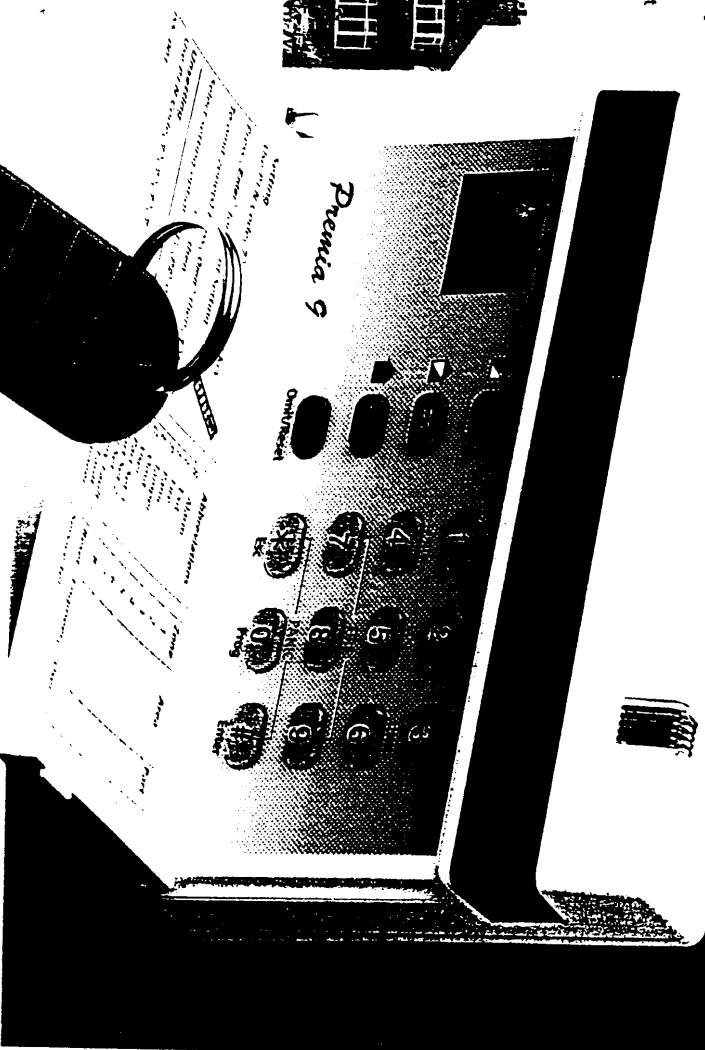
Every Premia 9 remote keypad contains a proximity reader compatible with the CQR Smartkey. This reader automatically reads the high security code held within the key when the key is held in front of the keypad (within 15mm).

Flexible 'Lifestyle' Entry Zones

Given that in certain circumstances entry to the premises may be made by some route other than the normal entry point i.e. rear or garage door, the Premia 9 features flexible entry zones, whereby an entry route zone (normally instant in full set) automatically becomes an entry/exit zone when the system is part set. This allows increased flexibility when the premises are occupied, without compromising security.

Engineer Friendly Programming System

The specification of the Premia 9 was developed with ease of engineer programming as a primary consideration. To this end CQR have developed a logical path programming system, which serves to direct the engineer with the aid of a twin seven segment LED display, easy to understand abbreviations, logical grouping of control functions and easy identification of function keys using a customised engineer overlay.



720 653
665
67

Comprehensively specified and studiously engineered, the Premia 9 is CQR's latest and most dynamic product innovation. Designed with ease of installation and programming as overriding features, the Premia 9 offers the next advance in useable intruder alarm technology.

The Future of Alarm Control Is now in your hands.



Central to this is the CQR Smartkey, a high security proximity key that sets and unsets the system when presented to the proximity reader situated within the remote keypad. What could be simpler for the elderly, infirm or technophobic, to whom a PIN code often forms a formidable barrier to using the system.

The **Premia 9** will accept up to four programmed Smartkeys and four remote keypads, making it suitable for both domestic and light commercial applications. And, as you would expect of any CQR product, reliability and performance levels are guaranteed by the exceptional build quality. So a good looks come as standard.

TECHNICAL SPECIFICATION

Blank End Station

Zones: 8 Fully Programmable + Fixed Tamper
Zone Types: Intruder, Exit, E/Route, 24hr, PA, Fire, Test
Configuration: Selectable double pole or EOL zones (individual AVT)
Part Set Groups: 3 (2 + Full Set only)
Exit Modes: Final door or Timed (both with Exit Terminate)
Event Logs: Up to 100 (operation and trouble events)
Monitoring: Bell Output, Battery and Mains Power + Programmable Se/Fire
Digicom Outputs: 3 off - 2 fixed (Alarm and PA)
Alarm Outputs: Bell, Strobe and Loudspeaker (up to 8 ohm)
Keypads: Up to 4 per system
DC Outputs: Total 1 amp continuous (1.5 amp in alarm)
Fusing: all DC outputs (Bell/Aux, RKP, Battery) and 240v ac
Dimensions: 90mm (D) x 250mm (H) x 297mm (W)
Case Material: 1.2mm mild steel
Compliance: BS4737 parts 1 and 2

Remote Keypad

System Control: Smartkey Proximity Reader or PIN code
Display: Dual 7 segment L.E.D.
System Users: 6 (4 and Master and Engineer) + 4 smartkeys
Keyboard: Backlit full travel keys
Keypress: Internal piezo sounder plus visual display
Confirmation: Double push panic and fire alarm
Emergency Buttons: Engineer friendly interactive programming
System Programming: Zone 1, tamper and exit terminator
Local Inputs: 12v dc, 60mA max.
Supply Power: 3mm polycarbonate (to BS4737)
Case Material:

Product Codes

RKP/Blank Endstation
Remote Keypad Only
Smartkey (10)

PREMIA 9
PREMIA 9KEY
PREMIA 9TAG

CQR also produce additional Premia 9 product literature aimed at the end user, which is available to the installer free of charge. Contact the CQR sales office on 0151 606 1000 for more details.

DISTRIBUTED BY

CQR

SECURITY COMPONENTS

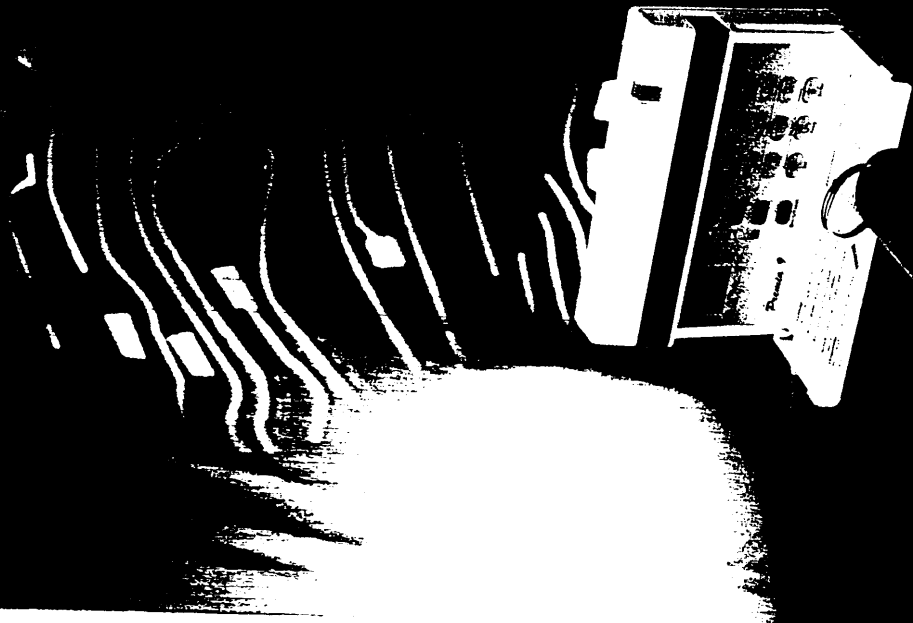
25 Pasture Road, Moreton, Wirral, Merseyside L46 4TH.
Tel: 0151 606 1000 Fax: 0151 606 1122

720 653
665
677

CQR

SECURITY COMPONENTS

DARES TO BE DIFFERENT!



Premia 9
CONTROL SYSTEM