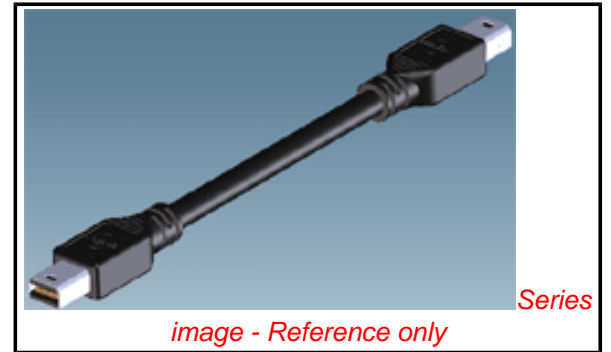


PLEASE CHECK WWW.MOLEX.COM FOR LATEST PART INFORMATION

Part Number: [0687850004](#)
Status: **Active**
Overview: [displayport](#)
Description: Mini DisplayPort*(Plug)-to-Mini DisplayPort*(Plug) Cable Assembly, 1.0m (3.28'), Lead-free

Documents:

[Drawing \(PDF\)](#) [RoHS Certificate of Compliance \(PDF\)](#)
[Product Specification PS-68785-0004 \(PDF\)](#)



General

Product Family	Cable Assemblies
Series	68785
Connector to Connector	Mini DisplayPort* Both Ends
Overview	displayport
Product Name	DisplayPort*, Mini DisplayPort*

Physical

Cable Length	1.0m (3.28')
Circuits (Loaded)	20
Color - Resin	Black
Gender	Male-Male
Lock to Mating Part	Yes
Material - Metal	Copper Alloy
Material - Plating Mating	Gold
Material - Resin	High Temperature Thermoplastic
Packaging Type	Carton
Pitch - Mating Interface (in)	0.024 In
Pitch - Mating Interface (mm)	0.60 mm
Single Ended	No
Waterproof / Dustproof	No
Wire Insulation Diameter	N/A
Wire/Cable Type	Round

Electrical

Current - Maximum per Contact	.5A
Impedance	100 ohms
Shield Type	Full Shield
Shielded	Yes
Voltage - Maximum	40V AC

Material Info

Reference - Drawing Numbers

Product Specification	PS-68785-0004
Sales Drawing	SD-68785-0004

Mini DisplayPort* and DisplayPort* are trademarks or registered trademarks of VESA

EU RoHS

**ELV and RoHS
Compliant**
**REACH SVHC
Not Reviewed**
**Halogen-Free
Status**

China RoHS



**Need more information on product
environmental compliance?**

Email productcompliance@molex.com
 For a multiple part number RoHS Certificate of Compliance, [click here](#)

Please visit the [Contact Us](#) section for any non-product compliance questions.

Search Parts in this Series

[68785Series](#)

Mates With

[105081](#) Mini DisplayPort* Receptacles

7

6

5

4

3

2

1

REVISIONS

ECN NO	DATE	REVISION	DESCRIPTION	CHANGER
	SEP 07,09	A	INITIAL RELEASE	JOE XIE

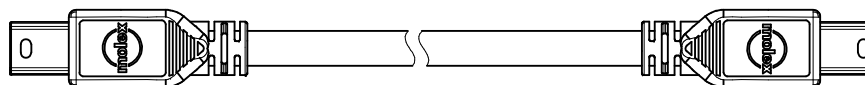
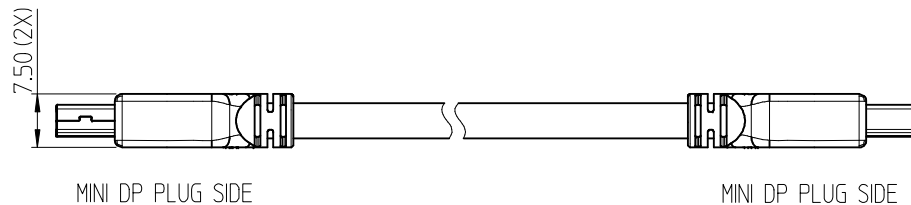
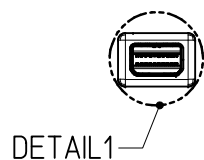
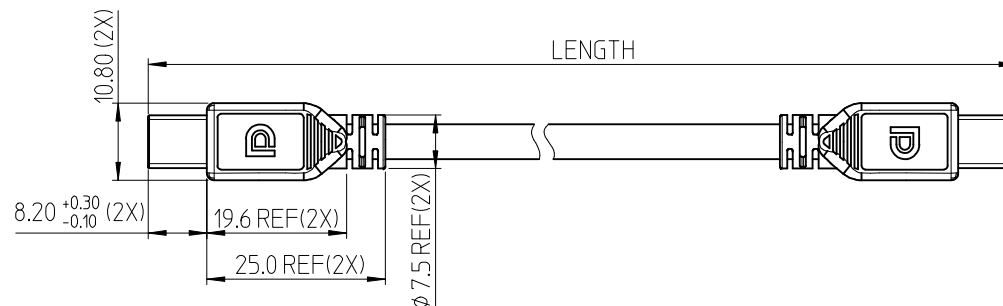
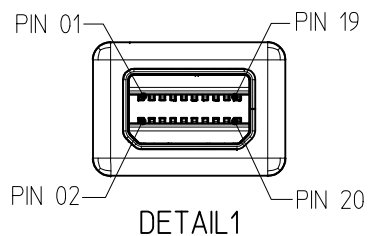


TABLE-1:

687850006	2000±40
687850005	1500±30
687850004	1000±20
PART NO.	LENGTH

EC NO: DG2010-0085 2009/11/02 DRWN: YOXIE CHKD: CLU0 APPR: CLU0 2009/11/03 2009/11/03	DESCRIPTION	QUALITY SYMBOLS	GENERAL TOLERANCES (UNLESS SPECIFIED)	DIMENSION STYLE	SCALE	DESIGN UNITS	THIRD ANGLE PROJECTION												
		$\blacktriangledown = 0$ $\triangleleft = 0$	<table border="1"> <thead> <tr> <th></th> <th>mm</th> <th>INCH</th> </tr> </thead> <tbody> <tr> <td>4 PLACES</td> <td>± ---</td> <td>± ---</td> </tr> <tr> <td>3 PLACES</td> <td>± ---</td> <td>± ---</td> </tr> <tr> <td>2 PLACES</td> <td>± 0.25</td> <td>± ---</td> </tr> <tr> <td>1 PLACE</td> <td>± 0.5</td> <td>± ---</td> </tr> </tbody> </table>		mm	INCH		4 PLACES	± ---	± ---	3 PLACES	± ---	± ---	2 PLACES	± 0.25	± ---	1 PLACE	± 0.5	± ---
	mm	INCH																	
4 PLACES	± ---	± ---																	
3 PLACES	± ---	± ---																	
2 PLACES	± 0.25	± ---																	
1 PLACE	± 0.5	± ---																	
A	REV	DRAFT WHERE APPLICABLE MUST REMAIN WITHIN DIMENSIONS	ANGULAR $\pm 3^\circ$	DRAWN BY	DATE	TITLE	MINIDP PLUG TO MINIDP PLUG CABLE ASSY												
				CHECKED BY	DATE														
				APPROVED BY	DATE	MOLEX INCORPORATED													
				MATERIAL NO.	SEE TABLE-1	DOCUMENT NO.	SD-68785-0004												
				SIZE	A4	THIS DRAWING CONTAINS INFORMATION THAT IS PROPRIETARY TO MOLEX INCORPORATED AND SHOULD NOT BE USED WITHOUT WRITTEN PERMISSION													
						SHEET NO.	1 OF 2												

6

5

4

3

2

1

7

6

5

4

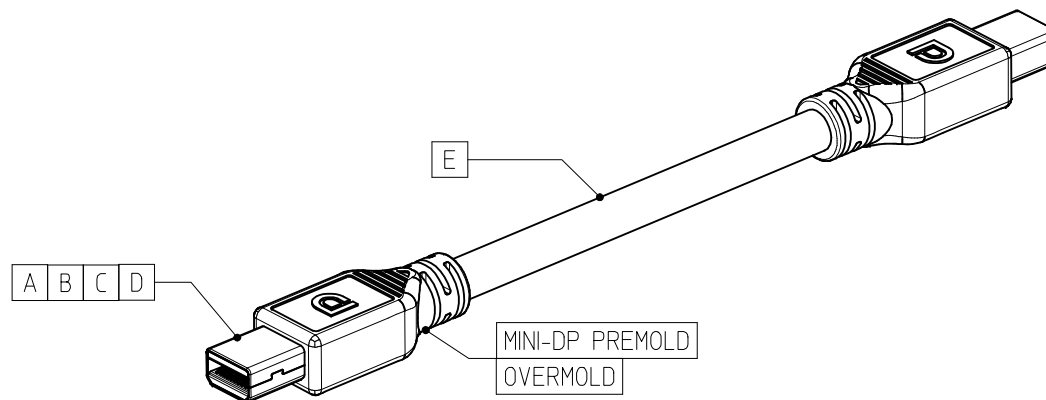
3

2

1

WIRING DIAGRAM

MINI DP PLUG SOURCE SIDE	FUNCTION	MINI DP PLUG SINK SIDE
PIN 01	GROUND	PIN 08
PIN 03	ML0+	PIN 12
PIN 05	ML0-	PIN 10
PIN 07	GROUND	PIN 13
PIN 09	ML1+	PIN 17
PIN 11	ML1-	PIN 15
PIN 13	GROUND	PIN 07
PIN 15	ML2+	PIN 11
PIN 17	ML2-	PIN 09
PIN 19	GROUND	PIN 19
PIN 02	HOT PLUG DETECT	PIN 02
PIN 04	CONFIG 1	PIN 04
PIN 06	CONFIG 2	PIN 06
PIN 08	GROUND	PIN 01
PIN 10	ML3+	PIN 05
PIN 12	ML3-	PIN 03
PIN 14	GROUND	PIN 14
PIN 16	AUX+	PIN 16
PIN 18	AUX-	PIN 18
PIN 20	NO CONNECTION	PIN 20
SHELL	GROUND	SHELL



NOTES:

1. MATERIALS:

OVERMOLD: PVC, COLOR BLACK, UL94-V0.
 CABLE: PVC JACKET, BLACK, UL94-VW-1.
 HOUSING: HIGH TEMPERATURE THERMOPLASTIC.
 TERMINAL: COPPER ALLOY, GOLD PLATING, NICKEL UNDERPLATE.
 SHELL: COPPER ALLOY, NICKEL PLATING.

2. ELECTRICAL PROPERTY:

3.1 APPLIED VOLTAGE RATING: 40V AC (RMS).
 3.2 CURRENT RATING: 0.5A.
 3.3 DIELECTRIC WITHSTAND: 300V.
 3.4 INSULATION RESISTANCE: 100M OHM (UNMATING),
 10M OHM (MATING).

3. OPERATION TEMPERATURE: -20°C TO +80°C.

4. THE PRODUCT COMPLIANT TO MOLEX ES-40000-5016.

ITEM	DESCRIPTION	MATERIAL	USAGE
E	MINI DP CABLE	---	---
D	BOTTOM SHELL FOR MINI DP PLUG	COPPER ALLOY	2 PCS
C	TOP SHELL FOR MINI DP PLUG	COPPER ALLOY	2 PCS
B	SHIELD SHELL FOR MINI DP PLUG	COPPER ALLOY	2 PCS
A	SUB-ASSEMBLY FOR MINI DP PLUG	---	2 PCS

EC NO: DG2010-0085 2009/11/02 DRWN:YOXIE 2009/11/03 CHKD:CLU0 APPR:CLU0	DESCRIPTION	QUALITY SYMBOLS	GENERAL TOLERANCES (UNLESS SPECIFIED)		DIMENSION STYLE MM ONLY		SCALE ---	DESIGN UNITS METRIC	THIRD ANGLE PROJECTION															
		▽=0 ▽=0	<table border="1"> <thead> <tr> <th></th> <th>mm</th> <th>INCH</th> </tr> </thead> <tbody> <tr> <td>4 PLACES</td> <td>± ---</td> <td>± ---</td> </tr> <tr> <td>3 PLACES</td> <td>± ---</td> <td>± ---</td> </tr> <tr> <td>2 PLACES</td> <td>± 0.25</td> <td>± ---</td> </tr> <tr> <td>1 PLACE</td> <td>± 0.5</td> <td>± ---</td> </tr> </tbody> </table>		mm	INCH	4 PLACES	± ---	± ---	3 PLACES	± ---	± ---	2 PLACES	± 0.25	± ---	1 PLACE	± 0.5	± ---	ANGULAR ± 3 °		DRAWN BY DATE		TITLE	
	mm	INCH																						
4 PLACES	± ---	± ---																						
3 PLACES	± ---	± ---																						
2 PLACES	± 0.25	± ---																						
1 PLACE	± 0.5	± ---																						
DRAFT WHERE APPLICABLE MUST REMAIN WITHIN DIMENSIONS		CHECKED BY DATE		APPROVED BY DATE		MOLEX MOLEX INCORPORATED																		
A	REV	MATERIAL NO. SEE TABLE-1		DOCUMENT NO. SD-68785-0004		SHEET NO. 2 OF 2		THIS DRAWING CONTAINS INFORMATION THAT IS PROPRIETARY TO MOLEX INCORPORATED AND SHOULD NOT BE USED WITHOUT WRITTEN PERMISSION																

6

5

4

3

2

1