

TOTAL POWER INTERNATIONAL, INC.

# 10 TO 12 WATTS 2:1 INPUT RANGE SINGLE and DUAL OUTPUT DC - DC CONVERTERS

## TP 3E SERIES

### Features:

- 65-75% Efficiency
- Wide Input Range
- Pi Input Filter
- Regulated Outputs
- Low Ripple and Noise
- Short Circuit Protection
- Over Voltage Protection



### Specifications:

#### Input

Input Voltage Range : 2:1  
Input Filter : Pi Network

#### Output

Voltage/Current Ratings : See order information table  
Line Regulation :  $\pm 0.5\%$  max.  
Load Regulation :  $\pm 1\%$  max.  
Dielectric Withstand : 500 VDC min.  
Ripple and Noise : 0.5-1%/p-p max.  
Isolation Resistance :  $10^9$  ohms  
Isolation Capacitance : 30pF  
Efficiency : 65-75%  
Switching Frequency : 50 KHz min.  
Output Protection : Short Circuit Protection, Continuous  
Over Voltage Protection

#### Environmental

Operating Temperature : -25C to + 71C  
Storage Temperature : -55C to +105C  
Temperature Coefficient :  $\pm 0.02\%$ /degree C  
EMI/RFI : Six-Sided Continuous Metal Case

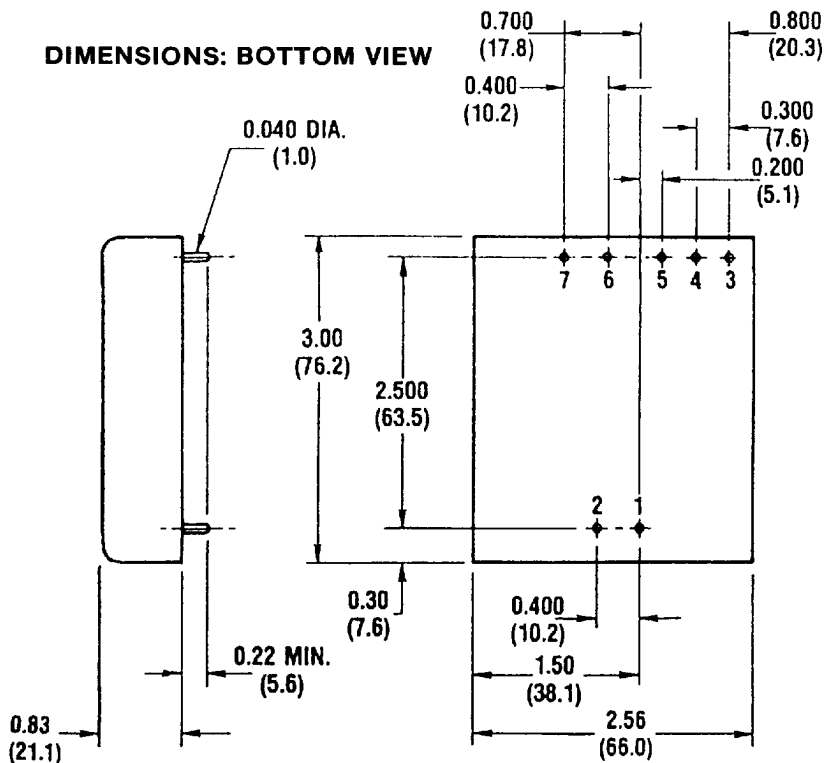
#### Mechanical

Case Material : Black Coated Copper Case with Non-Conductive Base

### ORDER INFORMATION TABLE

INPUT VOLTAGE (Vdc)	OUTPUT VOLTAGE (Vdc)	OUTPUT CURRENT (mA)	INPUT CURRENT (mA)		MODEL NO.
			NO LOAD	FULL LOAD	
4.5-6.0	5	2000	215	2996	3E201-05S05
4.5-6.0	12	1000	245	3470	3E101-05S12
4.5-6.0	15	670	260	3025	3E670-05S15
4.5-6.0	± 12	400	265	2824	3E400-05D12
4.5-6.0	± 15	330	260	2966	3E330-05D15
9-18	5	2000	90	1280	3E201-12S05
9-18	12	1000	100	1450	3E101-12S12
9-18	15	670	110	1540	3E670-12S15
9-18	± 12	400	115	1176	3E400-12D12
9-18	± 15	330	110	1260	3E330-12D15
18-36	5	2000	45	640	3E201-24S05
18-36	12	1000	50	714	3E101-24S12
18-36	15	670	55	600	3E670-24S15
18-36	± 12	400	55	588	3E400-24D12
18-36	± 15	330	55	600	3E330-24D15
36-72	5	2000	20	320	3E201-48S05
36-72	12	1000	25	360	3E101-48S12
36-72	15	670	25	320	3E670-48S15
36-72	± 12	400	25	294	3E400-48D12
36-72	± 15	330	25	306	3E330-48D15

#### DIMENSIONS: BOTTOM VIEW



#### PIN CONNECTIONS:

PIN	SINGLE	DUAL
1.	+ INPUT	+ INPUT
2.	- INPUT	-- INPUT
3.	NC	+ OUTPUT
4.	NC	COMMON
5.	NC	- OUTPUT
6.	+ OUTPUT	NC
7.	- OUTPUT	NC