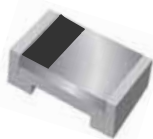


Small Signal Diode

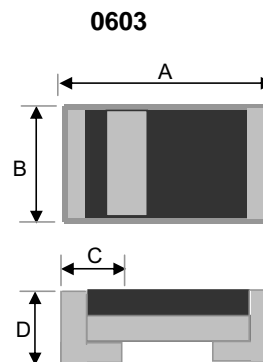


Features

- ◇ Designed for mounting on small surface.
- ◇ Extremely thin/leadless package
- ◇ High mounting capability, strong surge with stand, high reliability.
- ◇ Pb free version and RoHS compliant
- ◇ Halogen Free

Mechanical Data

- ◇ Case :0603 standard package, molded plastic
- ◇ Terminal: Gold plated, solderable per MIL-STD-750, Method 2026 guaranteed
- ◇ High temperature soldering guaranteed: 260°C/10s
- ◇ Polarity: Indicated by cathode band
- ◇ Weight : 0.004gram (approximately)



Dimensions	Unit (mm)		Unit (inch)	
	Min	Max	Min	Max
A	1.45	1.65	0.057	0.065
B	0.70	0.90	0.028	0.035
C	0.25	0.45	0.010	0.018
D	0.55	0.75	0.022	0.030

Ordering Information

Part No.	Package	Packing
TS4148C RZG	0603	5K / 7" Reel

Maximum Ratings and Electrical Characteristics

Rating at 25°C ambient temperature unless otherwise specified.

Maximum Ratings

Type Number	Symbol	Value	Units
Power Dissipation	P_D	200	mW
Repetitive Peak Reverse Voltage	V_{RRM}	75	V
Repetitive Peak Forward Current	I_{FRM}	200	mA
Mean Forward Current	I_o	100	mA
Non-Repetitive Peak Forward Surge Current	I_{FSM}	0.4	A
at $t < 1s$ and $T_j = 25^\circ C$ at $t \leq 8.3ms$ and $T_j = 25^\circ C$		0.1	
Thermal Resistance (Junction to Ambient)	$R_{\theta JA}$	375	$^\circ C/W$
Junction and Storage Temperature Range	T_J, T_{STG}	-55 to +150	$^\circ C$

Electrical Characteristics

Type Number	Symbol	Min	Max	Units
Reverse Breakdown Voltage	$V_{(BR)}$	-	75	V
Forward Voltage	V_F	-	1.00	V
		-	1.25	V
Reverse Leakage Current	I_R	-	0.025	μA
		-	5.0	
Junction Capacitance	C_J	-	4	pF
Reverse Recovery Time	T_{rr}	-	4.0	ns

Small Signal Diode

Rating and Sharacteristic Curves

FIG 1 Typical Forward Characteristics

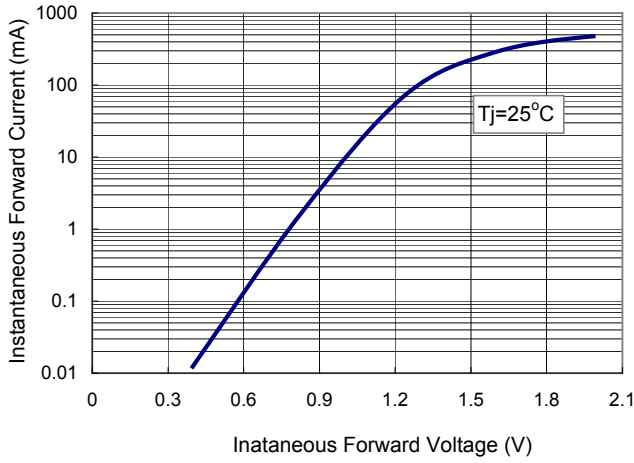


FIG 2 Typical Reverse Characteristics

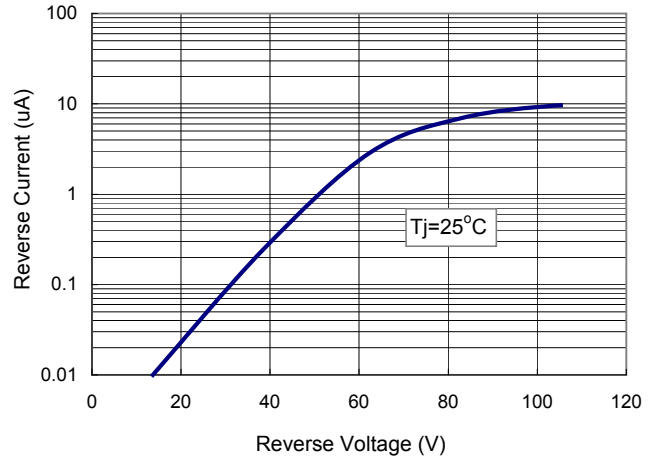


FIG 3 Admissible Power Dissipation Curve

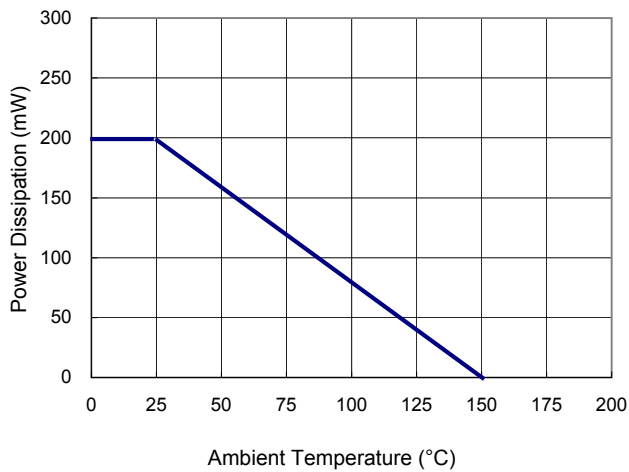


FIG 4 Typical Junction Capacitance

