

**PLEASE CHECK WWW.MOLEX.COM FOR LATEST PART INFORMATION**

**Part Number:** [0876362102](#)  
**Status:** **Active**  
**Description:** 1.27mm (.050") Pitch DDR DIMM Socket, Vertical, Black Latch, Single Key, with Beveled Metal Pins, 2.5V Left Voltage Key, 3.23mm (.127") Tail Length, 0.38µm (15µ") Gold (Au) Plating, 184 Circuits, Leadfree

**Documents:**

[3D Model](#) [Product Specification PS-87736-003 \(PDF\)](#)  
[Drawing \(PDF\)](#) [RoHS Certificate of Compliance \(PDF\)](#)

**General**

Product Family	Memory Module Sockets
Series	87636
Comments	<LI>Latches in Black Color<LI> 3.23mm (.127") Tail Length
Component Type	Memory Module
JEDEC Outline	MO-206
Product Name	DDR DIMM

**Physical**

Circuits (Loaded)	184
Color - Resin	Black
Durability (mating cycles max)	25
Entry Angle	Vertical (Top Entry)
Keying to Mating Part	Yes
Material - Metal	Phosphor Bronze
Material - Plating Mating	Gold
Material - Plating Termination	Tin
Material - Resin	High Temperature Thermoplastic
PC Tail Length (in)	0.127 In
PC Tail Length (mm)	3.23 mm
PCB Retention	Yes
PCB Thickness Recommended (in)	0.093 In
PCB Thickness Recommended (mm)	2.40 mm
Packaging Type	Tray
Pitch - Mating Interface (in)	0.050 In
Pitch - Mating Interface (mm)	1.27 mm
Plating min: Mating (µin)	15
Plating min: Mating (µm)	0.375
Plating min: Termination (µin)	100
Plating min: Termination (µm)	2.5
Temperature Range - Operating	-10°C to +85°C
Termination Interface: Style	Through Hole

**Electrical**

Current - Maximum per Contact	1A
Voltage - Maximum	50V
Voltage Key	2.5V, Left

**Solder Process Data**

Duration at Max. Process Temperature (seconds)	30
Lead-free Process Capability	SMC & Wave Capable (TH only)
Max. Cycles at Max. Process Temperature	1
Process Temperature max. C	240

**Material Info**

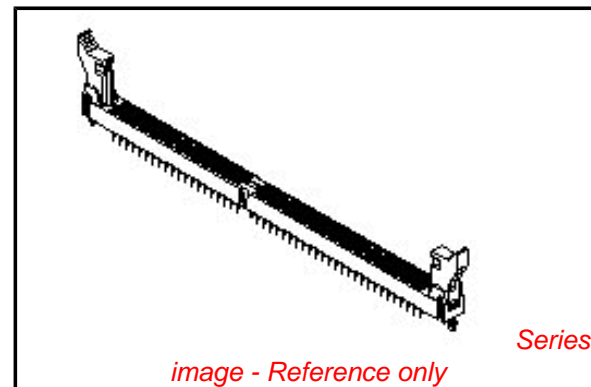


image - Reference only

**EU RoHS**

**ELV and RoHS Compliant**  
**REACH SVHC**  
 Not Reviewed  
**Halogen-Free Status**

**China RoHS**



**Not Reviewed**

**Need more information on product environmental compliance?**

Email [productcompliance@molex.com](mailto:productcompliance@molex.com)  
 For a multiple part number RoHS Certificate of Compliance, [click here](#)

Please visit the [Contact Us](#) section for any non-product compliance questions.

**Search Parts in this Series**

87636Series

**Mates With**

JEDEC MO-206 modules

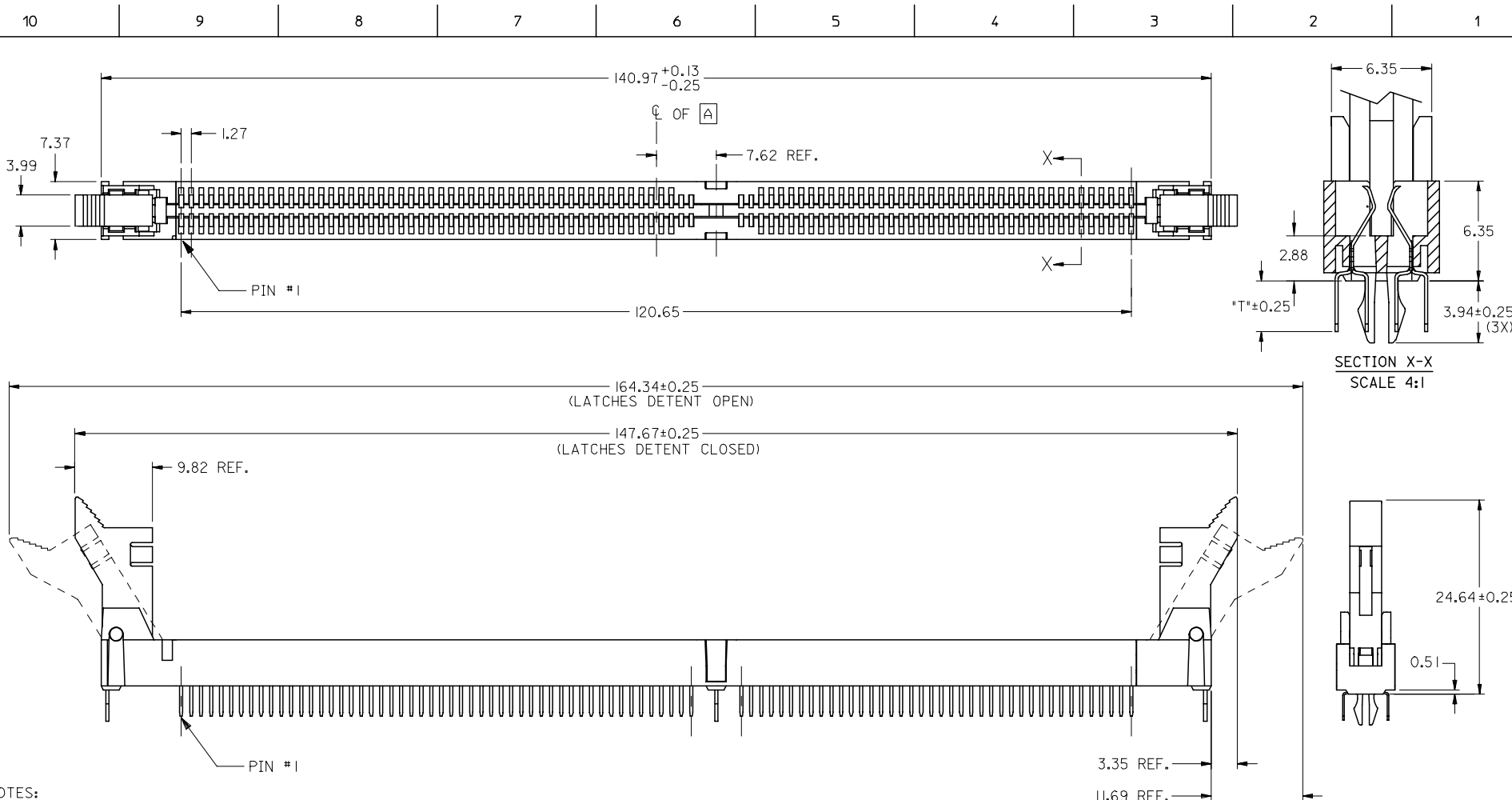
**Reference - Drawing Numbers**

Product Specification  
Sales Drawing

PS-87736-003  
SD-87636-001

This document was generated on 04/13/2010

**PLEASE CHECK [WWW.MOLEX.COM](http://WWW.MOLEX.COM) FOR LATEST PART INFORMATION**



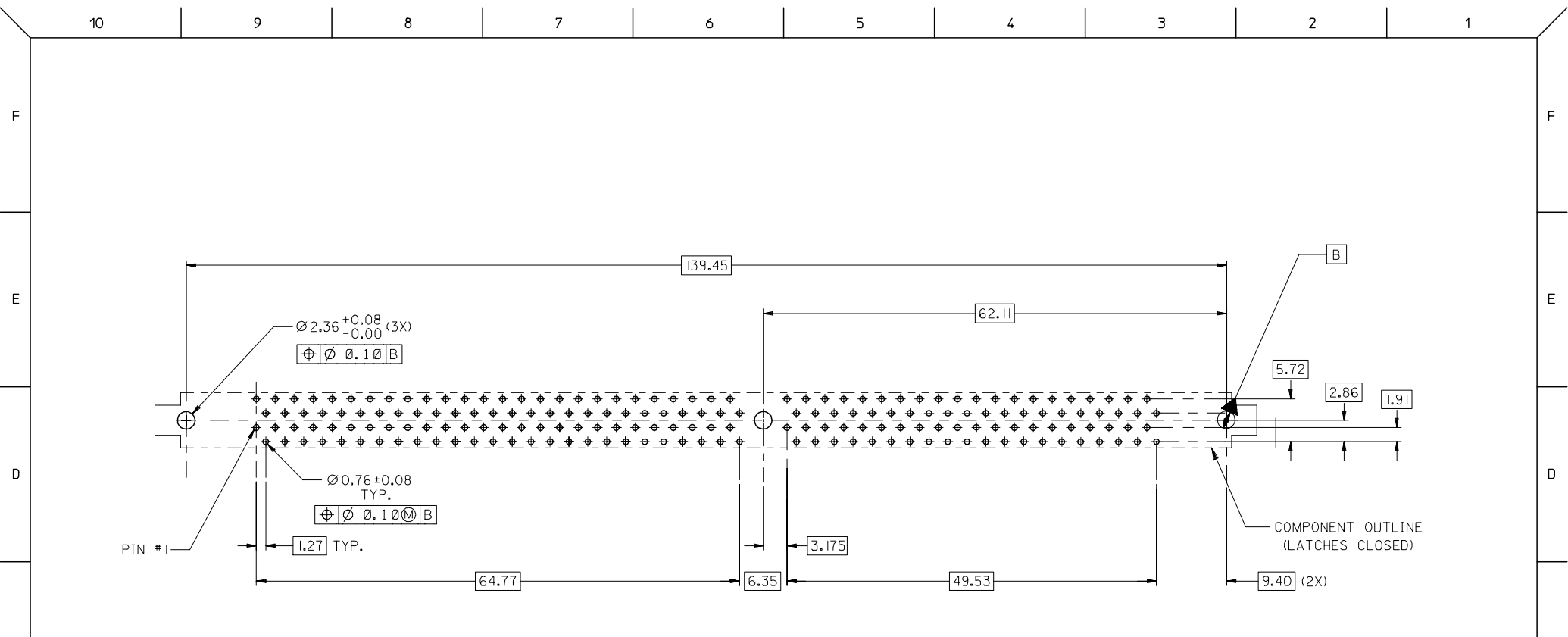
NOTES:

- CARD SLOT ACCEPTS  $1.27 \pm 0.10$  MM MODULE THICKNESS. (MEASURED OVER P.C. PADS).
- REFER TO PRODUCT SPEC. PS-87736-003 FOR PERFORMANCE SPECIFICATIONS.
- RECOMMENDED MODULE LAYOUT SHALL BE PER M0-206.
- RECOMMENDED PLATING ON MODULE PADS:  $0.76 \mu\text{M}$  MIN HARD GOLD (Au) OVER  $2.0 \mu\text{M}$  MIN NICKEL (Ni).
- PRODUCT WILL HAVE DATE CODE STAMPED ON SIDE OF HOUSING.

**MATERIALS:**  
 HOUSING - LCP, GLASS FILLED, UL94V-0, COLOR: BLACK  
 TERMINAL - COPPER ALLOY  
 LATCHES - HIGH TEMP NYLON, GLASS FILLED, UL94V-0

**PLATING:**  
 CONTACT AREA: SEE TABLE IN SHEET 3.  
 SOLDER TAILS: TIN THICKNESS:  $1.91 \mu\text{M}$  / ( $75 \mu\text{IN}$ ) MIN.  
 UNDERPLATE:  $1.27 \mu\text{M}$  / ( $50 \mu\text{IN}$ ) MIN NICKEL (Ni).

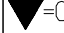
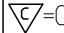
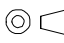

ADD DIMENSION EC NO: S2007-0163 DRWN:CMTEO 2006/08/17 CHKD:SHLENI 2006/08/17 APPR:GJLEE 2006/08/18	QUALITY SYMBOLS $\nabla=0$ $\triangle=0$	GENERAL TOLERANCES (UNLESS SPECIFIED)		DIMENSION STYLE MM ONLY		SCALE NTS	DESIGN UNITS METRIC	THIRD ANGLE PROJECTION		
		4 PLACES	$\pm$ ---	$\pm$ ---	DRAWN BY MLONG	DATE 2000/05/10	TITLE DDR DIMM, 1.27MM PITCH 184 CKTS, SINGLE KEY	MOLEX INCORPORATED		
		3 PLACES	$\pm$ ---	$\pm$ ---	CHECKED BY SQUEK	DATE 2000/05/11				
		2 PLACES	$\pm 0.15$	$\pm$ ---	APPROVED BY SKTOH	DATE 2000/05/12	DOCUMENT NO. SD-87636-001	SHEET NO. 1 OF 4		
1 PLACE	$\pm$ ---	$\pm$ ---	DRAFT WHERE APPLICABLE MUST REMAIN WITHIN DIMENSIONS		SEE TABLE		THIS DRAWING CONTAINS INFORMATION THAT IS PROPRIETARY TO MOLEX INCORPORATED AND SHOULD NOT BE USED WITHOUT WRITTEN PERMISSION			
		ANGULAR $\pm 3^\circ$								



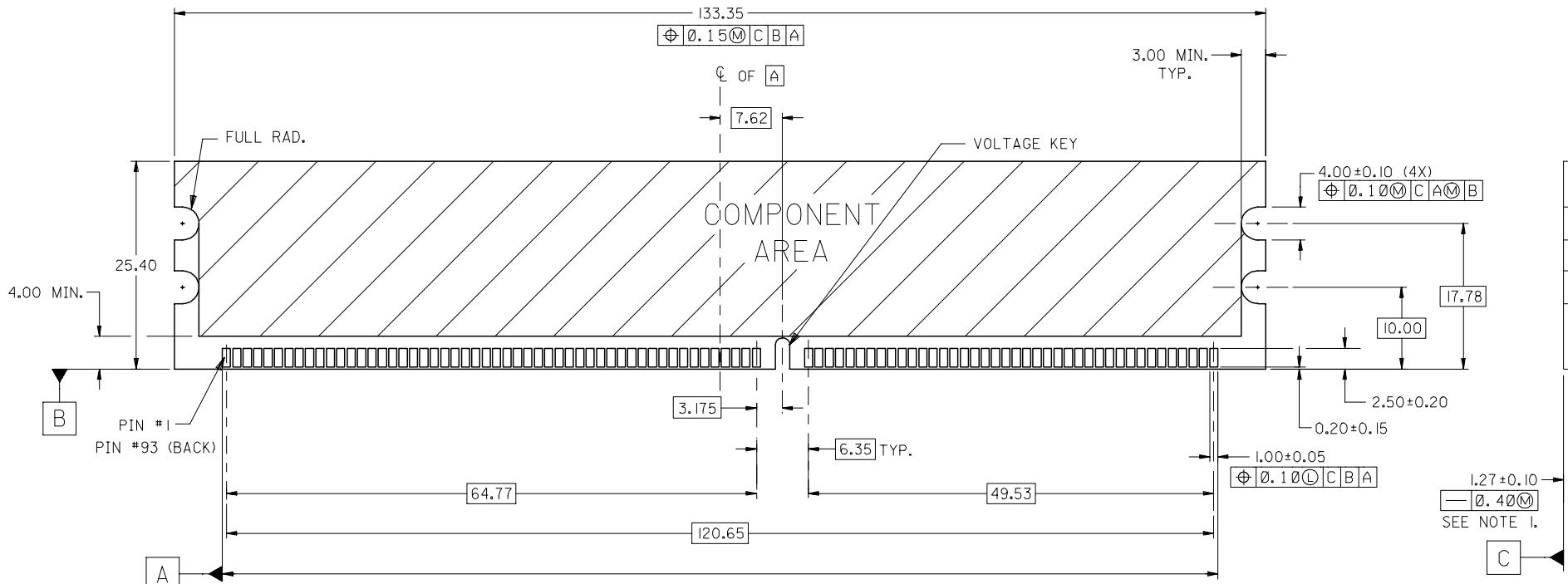
RECOMMENDED P.C. BOARD HOLE PATTERN  
(CONNECTOR SIDE)

ADD DIMENSION EC NO: S2007-0163 DRWN:CMTEO CHKD:SHLENI APPR:GGLLEE	2006/08/17 2006/08/17 2006/08/18	DESCRIPTION REV	QUALITY SYMBOLS	GENERAL TOLERANCES (UNLESS SPECIFIED)		DIMENSION STYLE MM ONLY		SCALE NTS	DESIGN UNITS METRIC	THIRD ANGLE PROJECTION
			▽=0 ∇=0	mm	INCH	DRAWN BY MLONG	DATE 2000/05/10	TITLE DDR DIMM, 1.27MM PITCH 184 CKTS, SINGLE KEY		
				4 PLACES ± ---	± ---	CHECKED BY SQUEK	DATE 2000/05/11			
				3 PLACES ± ---	± ---	APPROVED BY SKTOH	DATE 2000/05/12	MOLEX INCORPORATED		
				1 PLACE ± ---	± ---	ANGULAR ± 3 °				
				DRAFT WHERE APPLICABLE MUST REMAIN WITHIN DIMENSIONS		SIZE A3	SEE TABLE	DOCUMENT NO. SD-87636-001	SHEET NO. 2 OF 4	

PART NUMBER	DATUM VOLTAGE KEY	PACKAGING TYPE	DIM "T"	RECOMMENDED PCB THICKNESS	LATCH COLOR	CONTACT AREA PLATING
87636-2001	CENTER (1.8V)	TRAY	3.23	2.36	BEIGE	0.38uM/15uIN MIN. GOLD
87636-2002	LEFT (2.5V)					
87636-2011	CENTER (1.8V)					
87636-2012	LEFT (2.5V)					
87636-3001	CENTER (1.8V)		3.23	2.36	BLACK	0.76uM/30uIN MIN. GOLD
87636-3002	LEFT (2.5V)					
87636-3011	CENTER (1.8V)					
87636-3012	LEFT (2.5V)					
87636-2102	LEFT (2.5V)		3.23	2.36	BLACK	0.38uM/15uIN MIN. GOLD

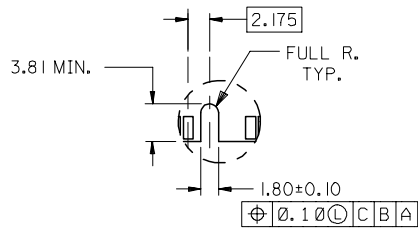
<b>ADD DIMENSION</b> EC NO: S2007-0163 DRWN:CMTEO 2006/08/17 CHKD:SHLENI 2006/08/17 APPR:GGLLEE 2006/08/18	<b>QUALITY SYMBOLS</b>  = 0  = 0	<b>GENERAL TOLERANCES (UNLESS SPECIFIED)</b>		<b>DIMENSION STYLE</b> MM ONLY		SCALE NTS	DESIGN UNITS METRIC	 <b>THIRD ANGLE PROJECTION</b>		
			mm	INCH	DRAWN BY	DATE	<b>DDR DIMM, 1.27MM PITCH          184 CKTS, SINGLE KEY</b>			
		4 PLACES	± ---	± ---	MLONG	2000/05/10				
		3 PLACES	± ---	± ---	CHECKED BY	DATE	 <b>MOLEX INCORPORATED</b>			
		2 PLACES	± 0.15	± ---	SQUEK	2000/05/11				
1 PLACE	± ---	± ---	APPROVED BY	DATE	MATERIAL NO. SKT0H 2000/05/12		DOCUMENT NO. SD-87636-001		SHEET NO. 3 OF 4	
<b>DRAFT WHERE APPLICABLE          MUST REMAIN          WITHIN DIMENSIONS</b>			<b>SEE TABLE</b>		THIS DRAWING CONTAINS INFORMATION THAT IS PROPRIETARY TO MOLEX INCORPORATED AND SHOULD NOT BE USED WITHOUT WRITTEN PERMISSION					

10 9 8 7 6 5 4 3 2 1

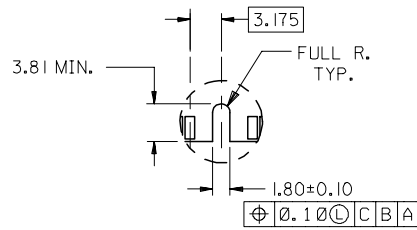


(OUTSIDE EDGE OF END PADS)

RECOMMENDED MODULE LAYOUT  
184 CKT 1.8V SHOWN



OFFSET LEFT KEY



CENTERED KEY

NOTES:

1. STRAIGHTNESS OF MODULE APPLIES TO THE AREA FROM THE BOTTOM OF THE CARD UP 4.00 MM.
2. IF TIE BARS ARE ATTACHED TO PADS, THE TIE BAR SHOULD BE ON AN INTERNAL LAYER, SO THAT THE REMNANT CANNOT CAUSE DAMAGE TO THE CONTACTS.

ADD DIMENSION EC NO: S2007-0163 2006/08/17 DRWN:CMTEO 2006/08/17 CHKD:SHLENI 2006/08/18 APPR:GGLLEE	DESCRIPTION REV	QUALITY SYMBOLS ▽=0 ◻=0	GENERAL TOLERANCES (UNLESS SPECIFIED)	DIMENSION STYLE MM ONLY	SCALE NTS	DESIGN UNITS METRIC	THIRD ANGLE PROJECTION	
				DRAWN BY MLONG	DATE 2000/05/10	TITLE DDR DIMM, 1.27MM PITCH 184 CKTS, SINGLE KEY		
				4 PLACES ± --- ± --- 3 PLACES ± --- ± --- 2 PLACES ± 0.15 ± --- 1 PLACE ± --- ± ---	CHECKED BY SQUEK	DATE 2000/05/11		
				ANGULAR ± 3 °	APPROVED BY SKTOH	DATE 2000/05/12	MATERIAL NO. SD-87636-001	DOCUMENT NO. SD-87636-001
F1	REV		DRAFT WHERE APPLICABLE MUST REMAIN WITHIN DIMENSIONS	SIZE A3	SEE TABLE	THIS DRAWING CONTAINS INFORMATION THAT IS PROPRIETARY TO MOLEX INCORPORATED AND SHOULD NOT BE USED WITHOUT WRITTEN PERMISSION		

9 8 7 6 5 4 3 2 1