

PLEASE CHECK WWW.MOLEX.COM FOR LATEST PART INFORMATION

Part Number: [0038002404](#)
Status: **Active**
Overview: [kk](#)
Description: 2.54mm (.100") Pitch KK® Connector, IDT, High Pressure Cat Ear Contact System, Green ID Stripe, 14 Circuit

Documents:

[Drawing \(PDF\)](#) [Product Specification PSX-7690S \(PDF\)](#)
[Product Specification PS-99020-0088 \(PDF\)](#) [RoHS Certificate of Compliance \(PDF\)](#)

Agency Certification

UL E29179

General

Product Family IDT and Solder Connectors
 Series [7690](#)
 Comments Version H
 Crimp Quality Equipment Yes
 Overview [kk](#)
 Product Name KK®

Physical

Circuits (Loaded) 14
 Color - Resin Natural
 Durability (mating cycles max) 25
 Flammability 94V-2
 Gender Female
 Glow-Wire Compliant No
 Lock to Mating Part Yes
 Material - Metal Brass
 Material - Plating Mating Tin
 Material - Plating Termination Tin
 Material - Resin Nylon
 Number of Rows 1
 Packaging Type Bag
 Panel Mount No
 Pitch - Mating Interface (in) 0.100 In
 Pitch - Mating Interface (mm) 2.54 mm
 Plating min: Mating (µin) 40
 Plating min: Mating (µm) 1.00
 Plating min: Termination (µin) 40
 Plating min: Termination (µm) 1.00
 Temperature Range - Operating 0°C to +75°C
 Wire Size AWG 24 Stranded, 26 Solid, 26 Stranded Topcoat

Electrical

Current - Maximum per Contact 2.5A
 Voltage - Maximum 250V

Solder Process Data

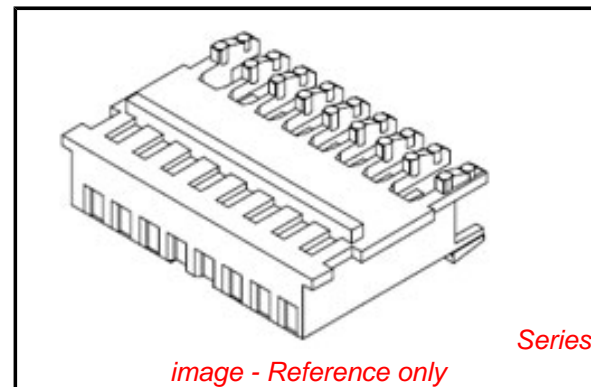
Lead-free Process Capability Wave Capable (TH only)

Material Info

Old Part Number 7690SC14H

Reference - Drawing Numbers

Product Specification PS-99020-0088, PSX-7690S



EU RoHS

**ELV and RoHS
Compliant**
REACH SVHC
 Not Reviewed
**Halogen-Free
Status**
Not Reviewed

China RoHS



**Need more information on product
environmental compliance?**

Email productcompliance@molex.com
 For a multiple part number RoHS Certificate of Compliance, [click here](#)

Please visit the [Contact Us](#) section for any non-product compliance questions.

Search Parts in this Series

[7690Series](#)

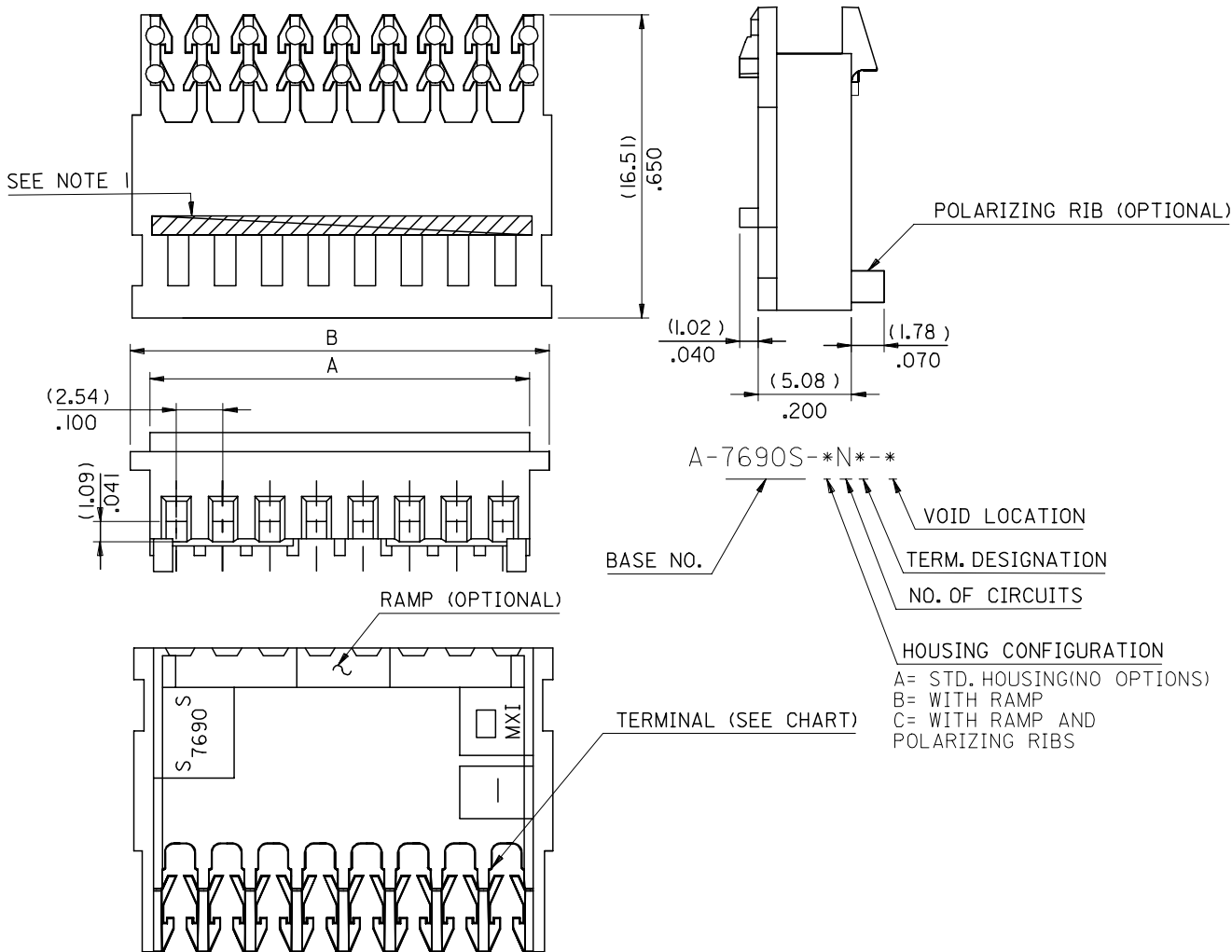
Mates With

Molex KK® 2.54mm (.100") pitch headers and 0.64mm (.025") pins

This document was generated on 05/19/2010

PLEASE CHECK WWW.MOLEX.COM FOR LATEST PART INFORMATION

CCT.	DIM "A"	DIM "B"
2	(2.54)/.100	(7.59)/.299
3	(5.08)/.200	(10.13)/.399
4	(7.62)/.300	(12.67)/.499
5	(10.16)/.400	(15.21)/.599
6	(12.70)/.500	(17.75)/.699
7	(15.24)/.600	(20.29)/.799
8	(17.78)/.700	(22.83)/.899
9	(20.30)/.800	(25.37)/.999
10	(22.86)/.900	(27.92)/1.099
11	(25.40)/1.000	(30.45)/1.199
12	(27.94)/1.100	(32.99)/1.299
13	(30.48)/1.200	(35.53)/1.399
14	(33.02)/1.300	(38.07)/1.499
15	(35.56)/1.400	(40.61)/1.599
16	(38.10)/1.500	(43.15)/1.699
17	(40.64)/1.600	(45.69)/1.799
18	(43.18)/1.700	(48.23)/1.899
19	(45.72)/1.800	(50.77)/1.999
20	(48.26)/1.900	(53.31)/2.099
21	(50.80)/2.000	(55.85)/2.199
22	(53.34)/2.100	(58.39)/2.299
23	(55.88)/2.200	(60.93)/2.399
24	(58.42)/2.300	(63.47)/2.499
25	(60.96)/2.400	(66.01)/2.599
26	(63.50)/2.500	(68.55)/2.699
27	(66.04)/2.600	(71.09)/2.799
28	(68.58)/2.700	(73.63)/2.899



- 1- COLOURED STRIPE RUNNING LENGTH OF THE RIB AS SHOWN
- 2- TERMINALS RO BE LUBRICATED PRIOR TO ASSEMBLY WITH MXI-3 LUBRICANT.
- 3- THIS ASSEMBLY WILL ACCOMODATE (1.24)/.056 MAX. DIA. INSULATION
- 4- CONNECTOR MATERIAL: NYLON 6/6 94V-2
- 5- FOR USE WITH (0.64)/.025 ROUND OR SQUARE WIRE TO INTERSECTION DEPTH OF (7.87/6.10) / .310/.240
- 6- VOIDS ARE AVAILABLE WITH DESIGNATED PIN ENTRY HOLES MOLDED CLOSED
- 7- ALL TERMINALS HAVE CAT-EARS CONFIGURATION
- 8- FOR STANDARD PARTS SEE FOLLOWING SHEETS
- 9- THIS PART CONFORMS TO PROD.SPEC.99020-0088

REVISED SEET 2 EC NO: E2006-0657 DRWN:DMASZKI/EMI/CZ 2006/06/06 CHKD:D. MOR ARTY 2006/06/07 APPR: DENNEHY 2006/06/09	QUALITY SYMBOLS	GENERAL TOLERANCES (UNLESS SPECIFIED)	DIMENSION STYLE	SCALE	DESIGN UNITS	THIRD ANGLE PROJECTION															
	$\nabla=0$ $\triangle=0$	<table border="1"> <thead> <tr> <th></th> <th>mm</th> <th>INCH</th> </tr> </thead> <tbody> <tr> <td>4 PLACES</td> <td>± ---</td> <td>± ---</td> </tr> <tr> <td>3 PLACES</td> <td>± ---</td> <td>±.005</td> </tr> <tr> <td>2 PLACES</td> <td>± 0.13</td> <td>±.010</td> </tr> <tr> <td>1 PLACE</td> <td>± 0.25</td> <td>± ---</td> </tr> </tbody> </table>		mm	INCH	4 PLACES	± ---	± ---	3 PLACES	± ---	±.005	2 PLACES	± 0.13	±.010	1 PLACE	± 0.25	± ---	MM/IN	4:1	METRIC	
		mm	INCH																		
	4 PLACES	± ---	± ---																		
3 PLACES	± ---	±.005																			
2 PLACES	± 0.13	±.010																			
1 PLACE	± 0.25	± ---																			
DESCRIPTION	DRAWN BY	DATE	TITLE																		
REV	O. COSTEL	1998/02/02	INSULATION DISPLACEMENT CONN. (2.54)/.100 CENTRELINES																		
	MOHALLOR	1998/09/16	MOLEX INCORPORATED																		
	APPROVED BY	DATE	DOCUMENT NO.																		
	MWILHITE	1998/09/16	SDA-7690S-*N*																		
	MATERIAL NO.		SHEET NO.																		
			1 OF 3																		
	DRAFT WHERE APPLICABLE MUST REMAIN WITHIN DIMENSIONS		THIS DRAWING CONTAINS INFORMATION THAT IS PROPRIETARY TO MOLEX INCORPORATED AND SHOULD NOT BE USED WITHOUT WRITTEN PERMISSION																		

PART NO.	ENG. NO.	CCTS	TERM NO.	I.D. STRIPE	PLT.G.
38-00-2212	A-7690S-C 2J	2	40 I25-J(P902)	BROWN	
38-00-2213	A-7690S-C 3J	3			
38-00-2214	A-7690S-C 4J	4			
38-00-2215	A-7690S-C 5J	5			
38-00-2216	A-7690S-C 6J	6			
38-00-2217	A-7690S-C 7J	7			
38-00-2218	A-7690S-C 8J	8			
38-00-2219	A-7690S-C 9J	9			
38-00-2220	A-7690S-C 10J	10			
38-00-2221	A-7690S-C 11J	11			
38-00-2222	A-7690S-C 12J	12			
38-00-2223	A-7690S-C 13J	13			
38-00-2224	A-7690S-C 14J	14			
38-00-2225	A-7690S-C 15J	15			
38-00-2226	A-7690S-C 16J	16			
38-00-2227	A-7690S-C 17J	17			
38-00-2228	A-7690S-C 18J	18			
38-00-2229	A-7690S-C 19J	19			
38-00-2230	A-7690S-C 20J	20			
38-00-2231	A-7690S-C 21J	21			
38-00-2232	A-7690S-C 22J	22			
38-00-2233	A-7690S-C 23J	23			
38-00-2234	A-7690S-C 24J	24			
38-00-2235	A-7690S-C 25J	25			
38-00-2236	A-7690S-C 26J	26			
38-00-2237	A-7690S-C 27J	27			
38-00-2238	A-7690S-C 28J	28	40 I25-J(P902)	BROWN	

HOT TIN DIP
(1-2.5UM).00004-.00010

PART NO.	ENG. NO.	CCTS	TERM NO.	I.D. STRIPE	PLT.G.
38-00-2392	A-7690S-C 2H	2	40 I25-H(P902)	GREEN	
38-00-2393	A-7690S-C 3H	3			
38-00-2394	A-7690S-C 4H	4			
38-00-2395	A-7690S-C 5H	5			
38-00-2396	A-7690S-C 6H	6			
38-00-2397	A-7690S-C 7H	7			
38-00-2398	A-7690S-C 8H	8			
38-00-2399	A-7690S-C 9H	9			
38-00-2400	A-7690S-C 10H	10			
38-00-2401	A-7690S-C 11H	11			
38-00-2402	A-7690S-C 12H	12			
38-00-2403	A-7690S-C 13H	13			
38-00-2404	A-7690S-C 14H	14			
38-00-2405	A-7690S-C 15H	15			
38-00-2406	A-7690S-C 16H	16			
38-00-2407	A-7690S-C 17H	17			
38-00-2408	A-7690S-C 18H	18			
38-00-2409	A-7690S-C 19H	19			
38-00-2410	A-7690S-C 20H	20			
38-00-2411	A-7690S-C 21H	21			
38-00-2412	A-7690S-C 22H	22			
38-00-2413	A-7690S-C 23H	23			
38-00-2414	A-7690S-C 24H	24			
38-00-2415	A-7690S-C 25H	25			
38-00-2416	A-7690S-C 26H	26			
38-00-2417	A-7690S-C 27H	27			
38-00-2418	A-7690S-C 28H	28	40 I25-H(P902)	GREEN	

HOT TIN DIP
(1-2.5UM).00004-.00010

REVISED
EC NO: E2006-0657
DRWN: DNASZKI/EMI/CZ 2006/06/06
CHKD: D. MORARTY 2006/06/07
APPR: DENNEHY 2006/06/09

QUALITY SYMBOLS
▽=0
▽=0

GENERAL TOLERANCES (UNLESS SPECIFIED)

	MM	INCH
4 PLACES	± 0.	± ---
3 PLACES	± 0.	± ---
2 PLACES	± 0.	± ---
1 PLACE	± 0.	± ---

ANGULAR ±1/2°

DRAFT WHERE APPLICABLE
MUST REMAIN WITHIN DIMENSIONS

DIMENSION STYLE
MM ONLY

DRAWN BY	DATE
O. COSTEL	1998/02/13
CHECKED BY	DATE
MOHALLOR	1998/09/16
APPROVED BY	DATE
MWILHITE	1998/09/16

MATERIAL NO. SEE CHART

SCALE ---
DESIGN UNITS METRIC
THIRD ANGLE PROJECTION

TITLE
INSULATION DISPLACEMENT CONNECTOR (2.54)/.100 CTR.

MOLEX INCORPORATED

DOCUMENT NO. SDA-7690S-*N*

SHEET NO. 2 OF 3

THIS DRAWING CONTAINS INFORMATION THAT IS PROPRIETARY TO MOLEX INCORPORATED AND SHOULD NOT BE USED WITHOUT WRITTEN PERMISSION