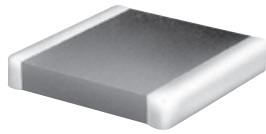


Electrical / Environmental

BMB



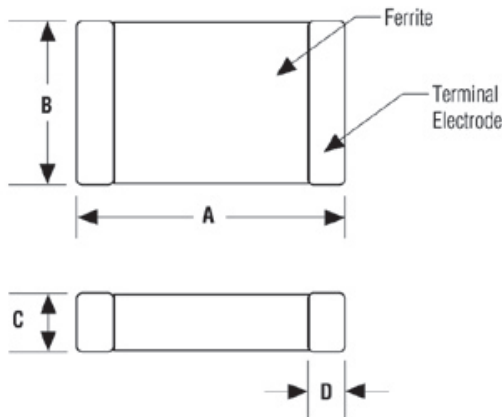
High Current Surface Mount Multilayer Chip Beads, 0603 - 1812 Industry Sizes

- Operating Temperature Range
Standard: -25°C to +85°C
Optional Extended Temperature Range: -40°C to +125°C
- Resistance to Solder Heat: 260°C for 10 sec.

Specifications / Packaging

Part Number	Impedance Z Ω ±25% @ 100 MHz	DCR Ω Max	Rated Current mA Max.	7" Reel Qty (Units)	Part Number	Impedance Z Ω ±25% @ 100 MHz	DCR Ω Max	Rated Current mA Max.	7" Reel Qty (Units)
BMB0603-P1A-600	60	0.09	2000	4K	BMB1206-P1A-121	120	0.04	3000	3K
BMB0603-P1A-121	120	0.09	2000	4K	BMB1206-P1A-501	500	0.07	2500	3K
BMB0603-P1A-601	600	0.20	1000	4k	BMB1206-P1A-601	600	0.07	2500	3k
BMB0805-P1A-600	60	0.04	3000	4K	BMB1806-P1A-600	60	0.04	3000	2K
BMB0805-P1A-121	120	0.04	3000	4K	BMB1806-P2A-600	60	0.015	6000	2K
BMB0805-P2A-121	120	0.02	5000	4K	BMB1812-P1A-121	120	0.04	3000	1K
BMB0805-P1A-601	600	0.20	1000	4K	BMB1812-P2A-121	120	0.015	6000	1K
BMB1206-P1A-500	50	0.04	3000	3K	BMB1812-P1A-601	600 @ 50 MHz	0.04	3000	1K
BMB1206-P2A-500	50	0.015	6000	3K	BMB1812-P1B-132	1300 @ 60 MHz	0.04	3000	1K

Outline Dimensions (Inch/mm)



Part #	A Dim.	B Dim.	C Dim.	D Dim.
BMB 0603 (1608)	.063±.006 1.6±0.15	.031±.006 0.8±0.15	.031±.006 0.8±0.15	.012±.008 0.3±0.20
BMB 0805 (2012)	.079±.008 2.0±0.20	.049±.008 1.25±0.20	.035±.008 0.9±0.20	.020±.012 0.5±0.30
BMB 1206 (3216)	.126±.008 3.2±0.20	.063±.008 1.6±0.20	.043±.008 1.1±0.20	.020±.012 0.5±0.30
BMB 1806 (4516)	.177±0.01 4.5±0.25	.063±.008 1.6±0.20	.063±.008 1.6±0.20	.024±.016 0.6±0.40
BMB 1812 (4532)	.177±0.01 4.5±0.25	.126±.01 3.2±0.25	.059±.010 1.5±0.25	.024±.016 0.6±0.40

Ordering Information

