

BOARD-TO-CABLE FEMALE CONNECTOR

IDC TYPE AND SOLDER TYPE FEMALE CONNECTOR FOR CABLE

Ordering Information

PCS-E()F

① ② ③

① Series Prefix

② Number of Contacts: 20, 28, 36, 50, 68, 80, 96

③ Wire Size

F : #28AWG(7/0.127), #30AWG(1/0.254),
outside diameter of covering 0.8 mm, IDC
for discrete wire

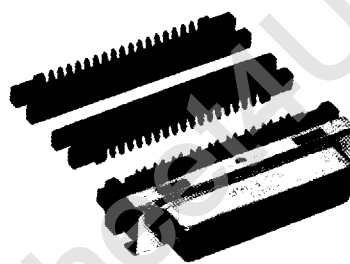
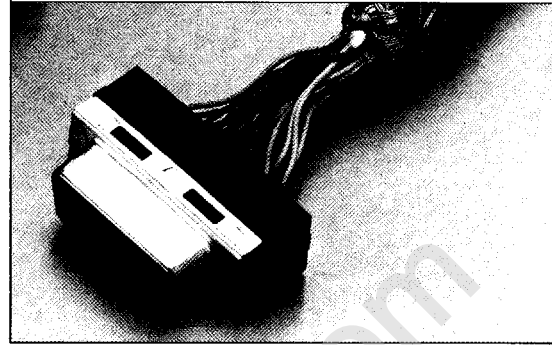
FA : #28AWG(7/0.127), #30AWG(1/0.254),
outside diameter of covering 0.5 to 0.65
mm, IDC for discrete wire

FB : #30AWG(7/0.1), outside diameter of
covering 0.5 to 0.65 mm, IDC for discrete
wire

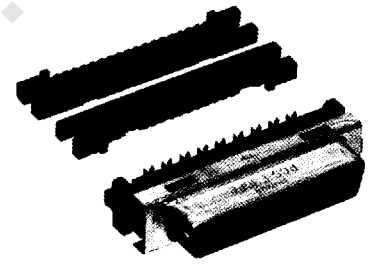
FC : #28AWG(7/0.127), IDC for cohesion type
cable

FD : #30AWG(7/0.1), IDC for cohesion type
cable

FS : Solder type, #20AWG MAX.

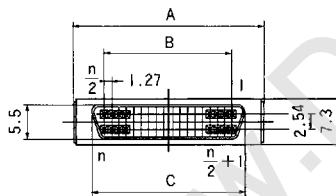


PCS-E36F

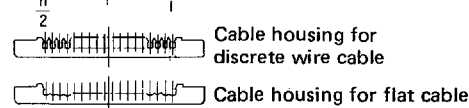
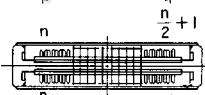
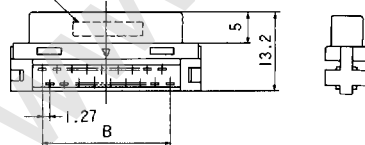


PCS-E36FC

IDC Type Female Connector for Cable PCS-E()F/PCS-E()FA/PCS-E()FB PCS-E()FC/PCS-E()FD



Designation (Underside)

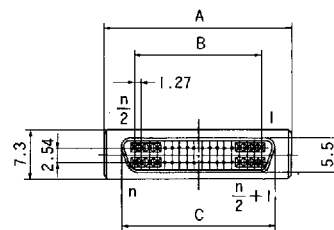


Cable housing for
discrete wire cable

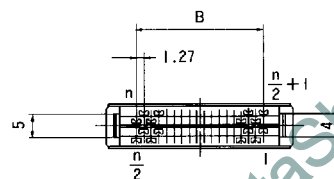
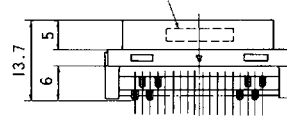
Cable housing for flat cable

No. of contacts	Part No.	A	B	C
20	PCS-E20F,FA,FB,FC,FD	21.65	11.43	15.6
28	PCS-E28F,FA,FB,FC,FD	26.7	16.51	20.68
36	PCS-E36F,FA,FB,FC,FD	31.8	21.59	25.76
50	PCS-E50F,FA,FB,FC,FD	40.7	30.48	34.65
68	PCS-E68F,FA,FB,FC,FD	52.1	41.91	46.08
80	PCS-E80F,FA,FB,FC,FD	59.7	49.53	53.7
96	PCS-E96F,FA,FB,FC,FD	69.9	59.69	63.86

Solder Type Connector PCS-E()FS



Designation (Underside)



No. of contacts	Part No.	A	B
20	PCS-E20FS	21.65	11.43
28	PCS-E28FS	26.7	16.51
36	PCS-E36FS	31.8	21.59
50	PCS-E50FS	40.7	30.48
68	PCS-E68FS	52.1	41.91

HIGH DENSITY CONNECTORS FOR PC BOARDS AND INTERFACES

High Density Connectors (anti-EMI, with lock, for interface)
for Board-to-Board and Board-to-Cable Connection

APPLICATION

The PCS series are high density connectors with 1.27 mm spacings designed to meet the need of connection in miniaturized electronic equipment, such as personal computers, facsimiles, printers and other OA equipments.

FEATURES

Features of the PCS series connectors include the following.

Board-to-board connector

- (1) Available with contacts ranging from 34 to 96, allowing diverse connections of circuits.
- (2) Designed for smooth connection and disconnection with low insertion and extraction force.
- (3) Drain mechanism is provided to drain washing solution out of the housing after flux cleaning.

Board-to-cable connector

- (1) IDC type (press fitting) cable connection is standard, allowing labor saving in connecting operation.
- (2) 28AWG(7/0.127), 38AWG(1/0.254) and 30AWG(7/0.1) wire sizes are available.
- (3) Designed to prevent EMI, in addition to FCC.
- (4) Construction for use in interface connection (cable covering and receptacle shell are made of die casting). A rigid metal spring is used for the connector joint and can be quickly locked.
- (5) Connectors are available with 20 to 96 contacts.

MATERIAL AND FINISH

Board-to-board connector

- Pin contact : Phosphor bronze (gold plating over nickel coating, solder plating on contact)
- Socket contact : Phosphor bronze (gold plating over nickel coating, solder plating on contact)
- Insulator : PBT resin (GF) UL94V-0 black

Board-to-cable connector

- Pin contact : Phosphor bronze (gold plating over nickel coating, solder plating on contact)
- Socket contact : Phosphor bronze (gold plating over nickel)
- Insulator : PBT resin (GF) UL94V-0 black
- Cable covering : Zinc die cast (nickel plating under copper)
- Receptacle shell : Zinc die cast (nickel plating under copper)
- Plug shell : Copper (tin plating)
- Lock spring : Stainless steel

PERFORMANCE

- Rated current : 1A
- Rated voltage : 250 V AC (r.m.s)
- Insulation resistance : 1000 M Ω or more
- Withstand voltage : 750 V AC (r.m.s) or more for 1 minute
- Contact resistance : 35 m Ω or less (including conductor resistance)
- Compatible board thickness : 1.6 mm
- Diameter of through-hole in board : ϕ 0.7 mm Minimum
- Operating temperature and humidity range : -55°C to +105°C, 85% Rh maximum

