

## LP379TYL1-C0G

### Applications

Advertising signs  
Indicators  
Message board

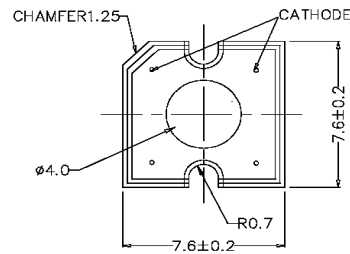
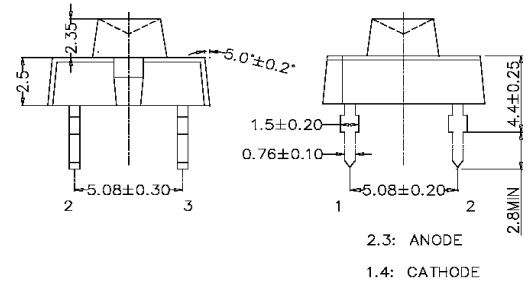
### Maximum Ratings (Ta=25°C)

Characteristic	Symbol	Max.	Unit
Forward Current	I <sub>F</sub>	70	mA
Reverse Voltage	V <sub>R</sub>	5	V
Power Dissipation	P <sub>D</sub>	150.00	mW
Operating Temperature	T <sub>opr</sub>	-40 ~ +100	°C
Storage Temperature	T <sub>stg</sub>	-40 ~ +100	°C
Soldering Temperature	T <sub>sol</sub>	260	°C
Soldering Time	-	for 5 sec. max	-

### Opto-Electrical Characteristics (Ta=25°C)

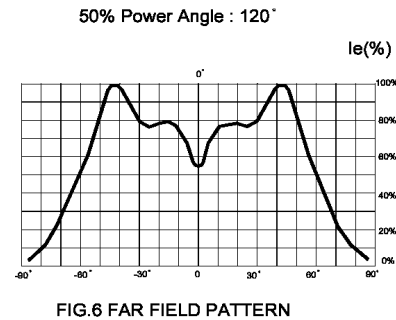
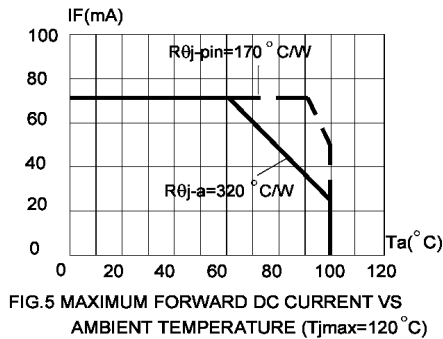
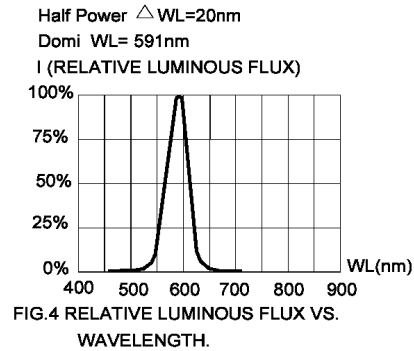
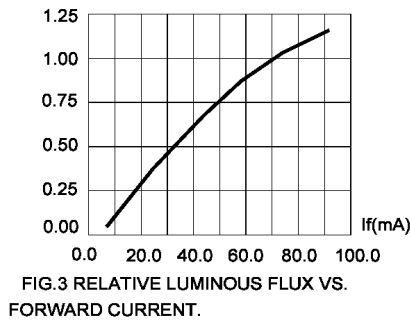
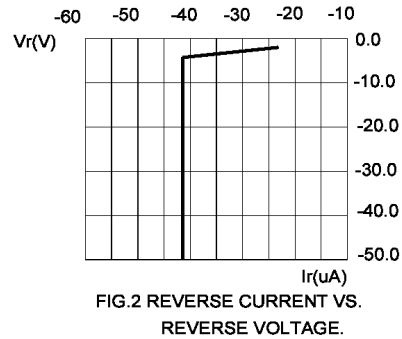
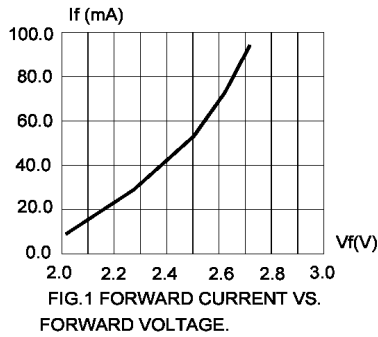
Characteristic	Symbol	Test Condition	Min	Typ	Max	Unit
Forward Voltage	V <sub>F</sub>	I <sub>F</sub> =70mA	-	2.60	3.20	V
Reverse Current	I <sub>R</sub>	V <sub>R</sub> =5V	-	-	100	μA
Luminous Intensity	I <sub>v</sub>	I <sub>F</sub> =70mA	1500.00	2600.00	-	mcd
Viewing Angle	2θ <sup>1/2</sup>	-	-	120°	-	deg.
Peak Wavelength	λ <sub>p</sub>	I <sub>F</sub> =70mA	-	594	-	nm
Dominant Wavelength	λ <sub>d</sub>	I <sub>F</sub> =70mA	-	591	-	nm
Spectral Line Half Width	Δλ	I <sub>F</sub> =70mA	-	20	-	nm

Specifications are subject to change without notice.



- NOTES: 1. ALL DIMENSIONS ARE IN mm TOLERANCE IS.±0.25mm UNLESS OTHERWISE NOTED.  
2. AN EPOXY MENISCUS MAY EXTEND ABOUT 1.5mm DOWN THE LEADS.  
3. BURR AROUND BOTTOM OF EPOXY MAY BE 0.5 mm MAX.

## LP379TYL1-C0G Graphs



1. Cathode PAD Area (0.18 X 0.18 X 2inch<sup>2</sup>)
2. Height above nominal seating plane in inches(0.3inch)