

PLEASE CHECK WWW.MOLEX.COM FOR LATEST PART INFORMATION

Part Number: [0496232095](#)
Status: **Active**
Description: 4.20mm (.165") Wire-to-Wire TPA™ Connector for Male Housing, 20 Circuits, UL94V-0, Ivory

Documents:

[Drawing \(PDF\)](#) [RoHS Certificate of Compliance \(PDF\)](#)
[Product Specification PS-49623-001 \(PDF\)](#)

Agency Certification

UL E29179

General

Product Family Crimp Housings
 Series [49623](#)
 Product Name N/A

Physical

Circuits (maximum) 20
 Circuits Detail 20
 Color - Resin Ivory
 Flammability 94V-0
 Gender Male
 Glow-Wire Compliant No
 Keying to Mating Part None
 Lock to Mating Part Yes
 Material - Resin Nylon
 Number of Rows 2
 Packaging Type Bag
 Panel Mount No
 Pitch - Mating Interface (in) 0.165 In
 Pitch - Mating Interface (mm) 4.20 mm
 Polarized to Mating Part Yes
 Stackable No
 Temperature Range - Operating -40°C to +105°C

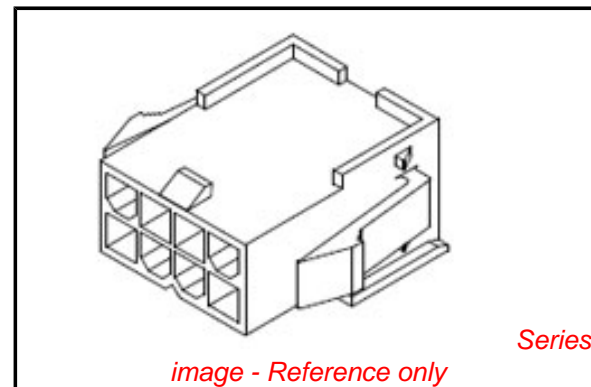
Electrical

Current - Maximum per Contact 6A

Material Info

Reference - Drawing Numbers

Product Specification PS-49623-001
 Sales Drawing SD-49623-001



EU RoHS

ELV and RoHS Compliant
REACH SVHC Contains SVHC: No
Halogen-Free Status

China RoHS



Need more information on product environmental compliance?

Email productcompliance@molex.com
 For a multiple part number RoHS Certificate of Compliance, [click here](#)

Please visit the [Contact Us](#) section for any non-product compliance questions.

Search Parts in this Series

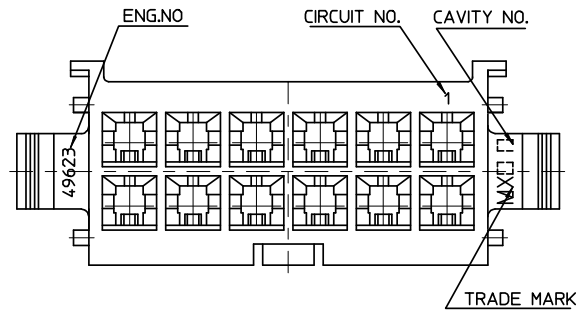
[49623Series](#)

Mates With

4.20mm (.165") Wire-to-Wire Female TPA™
[49624](#) , [49625](#) , [49626](#)

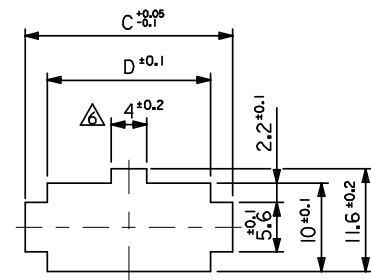
Use With

[5558](#) Mini-Fit® Crimp Terminal

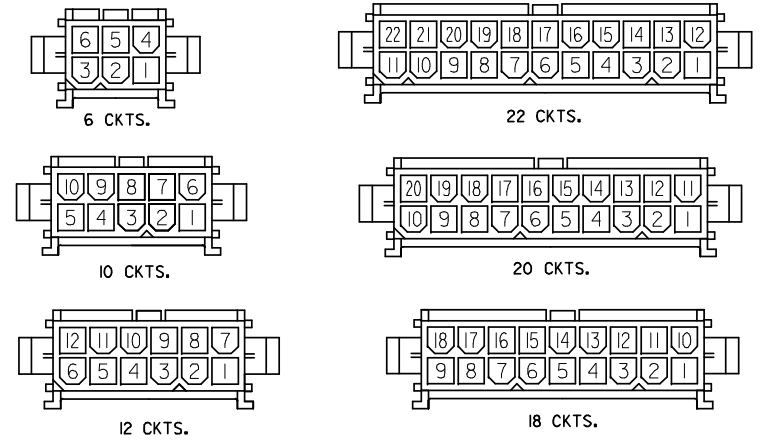
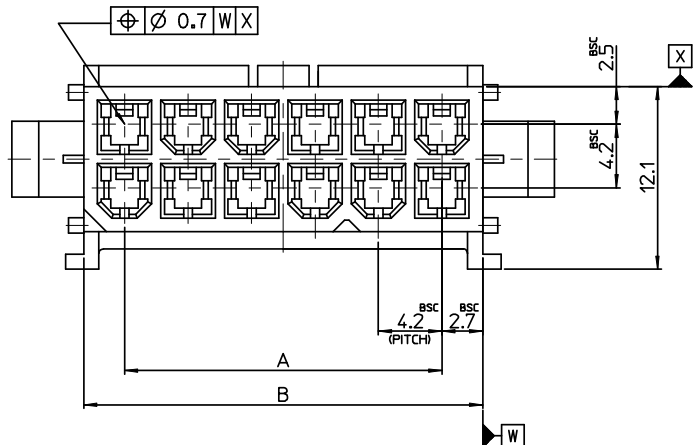
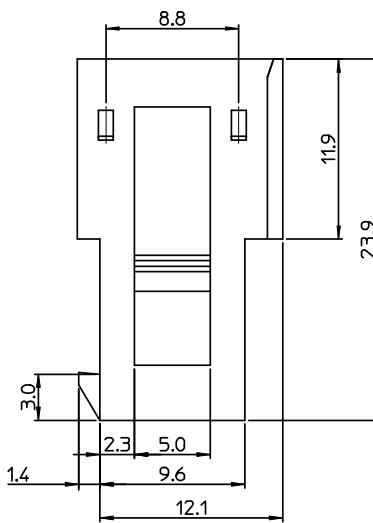
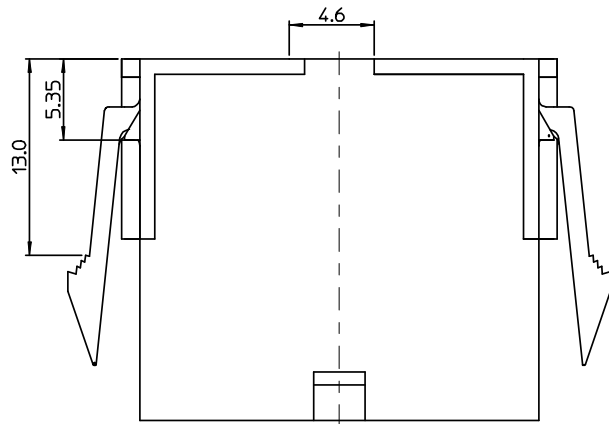
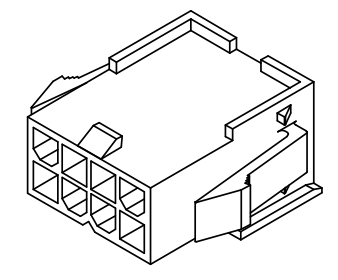


NOTES

- MATERIAL :
 - POLYAMID(PA66), UL94V-2, COLOR OF NATURAL
 - POLYAMID(PA66), UL94V-0, COLOR OF IVORY
- APPLICABLE TERMINAL · SERIES 5558 T2A, 5558 T
- MATE WITH : SERIES 49624, 49625, 49626
- PRODUCT SPECIFICATION · PS-49623-001
- PACKAGE SPECIFICATION : PK-49623-001
- PANEL HOLE TO BE PUNCHED OUT IN THE SAME DIRECTION AS INSERTION INTO THE PANEL



RECOMMENDED PANEL HOLE DIMENSION
(THICKNESS : 0.8-2.0mm)



CIRCUIT SIZE LAYOUT

TABLE-1

| | | | | |
|-------------------------|--------------|-------------------------|--------------|--------------|
| 49623-2295 | 496232295 | 49623-2290 | 496232290 | 22 |
| 49623-2095 | 496232095 | 49623-2090 | 496232090 | 20 |
| 49623-1895 | 496231895 | 49623-1890 | 496231890 | 18 |
| 49623-1295 | 496231295 | 49623-1290 | 496231290 | 12 |
| 49623-1095 | 496231095 | 49623-1090 | 496231090 | 10 |
| 49623-0695 | 496230695 | 49623-0690 | 496230690 | 06 |
| ENG NO. | MATERIAL NO. | ENG NO. | MATERIAL NO. | CIRCUIT SIZE |
| POLYAMID(PA66), UL94V-0 | | POLYAMID(PA66), UL94V-2 | | |

| | | | | |
|------|------|------|------|---------|
| 47.8 | 52.6 | 47.4 | 42 | 22 |
| 43.6 | 48.6 | 43.2 | 37.8 | 20 |
| 39.4 | 44.4 | 39 | 33.6 | 18 |
| 26.8 | 31.8 | 26.4 | 21 | 12 |
| 22.6 | 27.6 | 22.2 | 16.8 | 10 |
| 14.2 | 19.2 | 13.8 | 8.4 | 6 |
| D | C | B | A | CIRCUIT |

| | | |
|-----------------|---------------------|------------|
| RELEASED | EC NO: KOR2008-0134 | 2008/02/27 |
| DRAWN: SKHAN01 | 2008/02/27 | |
| CHKD: WY YANG | 2008/02/29 | |
| APPR: YUNSIKKIM | 2008/02/29 | |
| REV | DESCRIPTION | |

| | |
|-----------------|--|
| QUALITY SYMBOLS | GENERAL TOLERANCES (UNLESS SPECIFIED) |
| $\nabla=0$ | mm INCH |
| $\nabla=0$ | 4 PLACES ± --- ± --- |
| | 3 PLACES ± --- ± --- |
| | 2 PLACES ± 0.3 ± --- |
| | 1 PLACE ± 0.3 ± --- |
| | ANGULAR ± 3 ° |
| | DRAFT WHERE APPLICABLE MUST REMAIN WITHIN DIMENSIONS |

| | |
|-----------------|------------|
| DIMENSION STYLE | |
| MM ONLY | |
| DRAWN BY | DATE |
| SK. HAN | 2008/01/28 |
| CHECKED BY | DATE |
| WY. YANG | 2008/01/28 |
| APPROVED BY | DATE |
| EH. JUNG | 2008/01/28 |
| MATERIAL NO. | |
| SEE TABLE | |
| SIZE | A2 |

| | | |
|---|--------------|------------------------|
| SCALE | DESIGN UNITS | THIRD ANGLE PROJECTION |
| 4:1 | METRIC | |
| TITLE | | |
| 4.2MM W/W TPA CONN. FOR MALE HOUSING | | |
| MATERIAL NO. | | SHEET NO. |
| SD-49623-001 | | 1 OF 1 |
| THIS DRAWING CONTAINS INFORMATION THAT IS PROPRIETARY TO MOLEX INCORPORATED AND SHOULD NOT BE USED WITHOUT WRITTEN PERMISSION | | |