

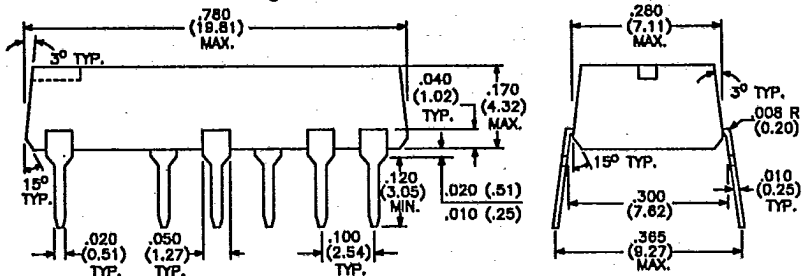
FAST & SCHOTTKY TTL BUFFERED DELAY MODULES

5-TAP ULTRA LOW PROFILE DIPS FALDM-XXX, ALDM-XXX SERIES

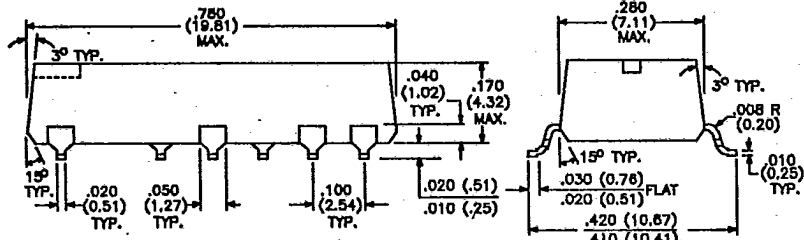
5-TAP PART NUMBERS		OUTPUT DELAY (ns)	TAPS (ns)
STTL	FAST		
**ALDM-9	**FALDM-8	8 ± 1.00	1 ± 0.5
**ALDM-13	**FALDM-12	12 ± 1.00	2 ± 1.0
**ALDM-17	**FALDM-16	16 ± 1.00	3 ± 1.0
ALDM-25	FALDM-25	25 ± 2.00	5 ± 2.0
ALDM-30	FALDM-30	30 ± 2.00	6 ± 2.0
ALDM-35	FALDM-35	35 ± 2.00	7 ± 2.0
ALDM-40	FALDM-40	40 ± 2.00	8 ± 2.0
ALDM-45	FALDM-45	45 ± 2.25	9 ± 2.0
ALDM-50	FALDM-50	50 ± 2.50	10 ± 2.0
ALDM-60	FALDM-55	60 ± 3.00	12 ± 2.0
ALDM-70	FALDM-70	70 ± 3.50	14 ± 2.0
ALDM-75	FALDM-75	75 ± 3.75	15 ± 2.5
ALDM-80	FALDM-80	80 ± 4.00	16 ± 2.5
ALDM-90	FALDM-90	90 ± 4.50	18 ± 2.5
ALDM-100	FALDM-100	100 ± 5.00	20 ± 3.0
ALDM-110	FALDM-110	110 ± 5.50	22 ± 3.0
ALDM-120	FALDM-120	120 ± 6.00	24 ± 3.0
ALDM-125	FALDM-125	125 ± 6.25	25 ± 3.0
ALDM-130	FALDM-130	130 ± 6.50	26 ± 3.0
ALDM-140	FALDM-140	140 ± 7.00	28 ± 3.0
ALDM-150	FALDM-150	150 ± 7.50	30 ± 3.0
ALDM-160	FALDM-160	160 ± 8.00	32 ± 3.2
ALDM-170	FALDM-170	170 ± 8.50	34 ± 3.4
ALDM-175	FALDM-175	175 ± 8.75	35 ± 3.5
ALDM-180	FALDM-180	180 ± 9.00	36 ± 3.6
ALDM-190	FALDM-190	190 ± 9.50	38 ± 3.8
ALDM-200	FALDM-200	200 ± 10.00	40 ± 4.0
ALDM-220	FALDM-220	220 ± 11.00	44 ± 4.4
ALDM-225	FALDM-225	225 ± 11.25	45 ± 4.5
ALDM-240	FALDM-240	240 ± 12.00	48 ± 4.8
ALDM-250	FALDM-250	250 ± 12.50	50 ± 5.0
ALDM-260	FALDM-260	260 ± 13.00	52 ± 5.2
ALDM-270	FALDM-270	270 ± 13.50	54 ± 5.4
ALDM-275	FALDM-275	275 ± 13.75	55 ± 5.5
ALDM-300	FALDM-300	300 ± 15.00	60 ± 6.0
ALDM-350	FALDM-350	350 ± 17.50	70 ± 7.0
ALDM-375	FALDM-375	375 ± 18.75	75 ± 7.5
ALDM-400	FALDM-400	400 ± 20.00	80 ± 8.0
ALDM-450	FALDM-450	450 ± 22.50	90 ± 9.0
ALDM-500	FALDM-500	500 ± 25.00	100 ± 10

PHYSICAL DIMENSIONS All dimensions in inches (mm)

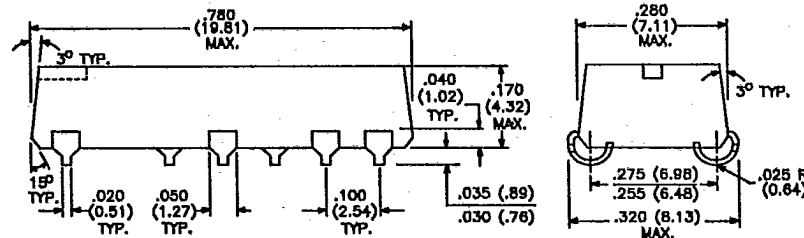
'AUTO-INSERTABLE' (through-hole) ALDM-XXX, FALDM-XXX



'GULL WING' SURFACE MOUNT ALDM-XXXG, FALDM-XXXG



'J' STYLE SURFACE MOUNT ALDM-XXXJ, FALDM-XXXJ



PART NUMBER DESCRIPTION XX XX - XXX X

DIP Delay Line
 AL = 14-PIN STTL DIP DM = 5-TAP
 FAL = 14-PIN FAST TTL DL = FIXED
 Total Delay In nanoseconds (ns)
 Lead Style

** INDICATES Delay Time measured with respect to TAP 1.

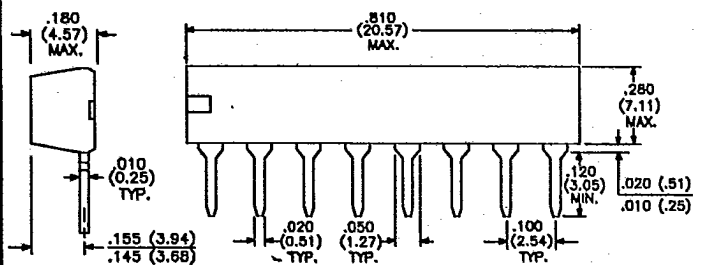
See Page 10 for Pin-Outs and schematic diagrams.

Blank = Auto-Insertable (through-hole)
 G = 'Gull Wing' Surface Mount J = 'J' Surface Mount

5-TAP THROUGH-HOLE 8-PIN SIP FSIDM, SIDM-XXX SERIES

PART NUMBER	OUTPUT DELAY (ns)	TAPS (ns)	PART NUMBER	OUTPUT DELAY (ns)	TAPS (ns)
**FSIDM-8	8 ± 1.00	1 ± 0.5	SIDM-90	90 ± 4.50	18 ± 2.5
**SIDM-9	9 ± 1.00	1 ± 0.5	SIDM-100	100 ± 5.00	20 ± 3.0
**FSIDM-12	12 ± 2.00	2 ± 1.0	SIDM-105	105 ± 5.25	21 ± 3.0
**SIDM-13	13 ± 2.00	2 ± 1.0	SIDM-110	110 ± 5.50	22 ± 3.0
**FSIDM-16	16 ± 2.00	3 ± 1.0	SIDM-115	115 ± 5.75	23 ± 3.0
**SIDM-17	17 ± 2.00	3 ± 1.0	SIDM-120	120 ± 6.00	24 ± 3.0
SIDM-25	25 ± 2.00	5 ± 2.0	SIDM-125	125 ± 6.25	25 ± 3.0
SIDM-30	30 ± 2.00	6 ± 2.0	SIDM-130	130 ± 6.50	26 ± 3.0
SIDM-35	35 ± 2.00	7 ± 2.0	SIDM-135	135 ± 6.75	27 ± 3.0
SIDM-40	40 ± 2.00	8 ± 2.0	SIDM-140	140 ± 7.00	28 ± 3.0
SIDM-45	45 ± 2.25	9 ± 2.0	SIDM-145	145 ± 7.25	29 ± 3.0
SIDM-50	50 ± 2.50	10 ± 2.0	SIDM-150	150 ± 7.50	30 ± 3.0
SIDM-60	60 ± 3.00	12 ± 2.0	SIDM-175	175 ± 8.75	35 ± 3.5
SIDM-65	65 ± 3.25	13 ± 2.0	SIDM-200	200 ± 10.00	40 ± 4.0
SIDM-70	70 ± 3.50	14 ± 2.0	SIDM-225	225 ± 11.25	45 ± 4.5
SIDM-75	75 ± 3.75	15 ± 2.5	SIDM-250	250 ± 12.50	50 ± 5.0
SIDM-80	80 ± 4.00	16 ± 2.5	SIDM-300	300 ± 15.00	60 ± 6.0

PHYSICAL DIMENSIONS All dimensions in inches (mm)



PART NUMBER DESCRIPTION XXX XX - XXX

SIP Delay Line: SI = STTL, FSI = FAST TTL
 DM = 5-TAP
 DL = FIXED
 See Page 10 for Pin-Outs
 Total Delay In nanoseconds (ns)

Specifications subject to change without notice



15801 Chemical Lane, Huntington Beach, CA 92649
 Phone: (714) 898-0960 • (213) 594-8918
 TWX: 910-596-1826 • FAX: (714) 896-0971
 TELEX: 62891137 RHOMBUS HTBH