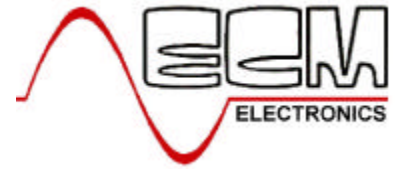
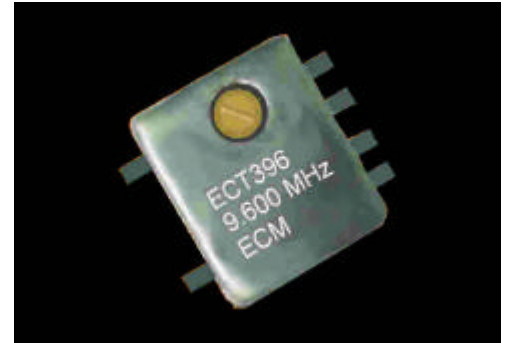


Surface Mount TCXO



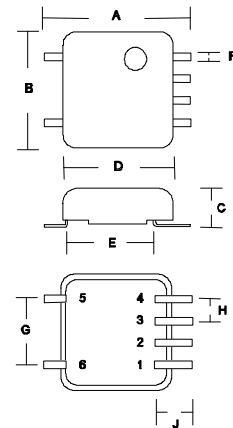
ECT396

- Low Profile
- Low Current Consumption
- Excellent Stability
- 3V Supply
- Custom options available

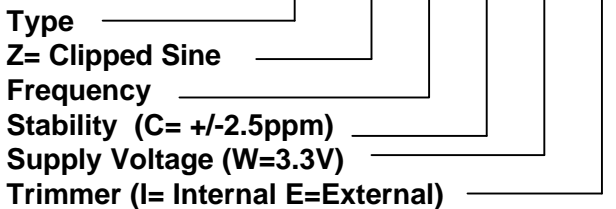


| Parameter | ECT396 | |
|-----------------------|--|---------|
| Frequency Range | 9.60 to 27.0Mhz | Specify |
| Temperature Stability | +/-2.5ppm -30 ⁰ to +75 ⁰ C (C) | |
| Storage Temp | -30 ⁰ to +80 ⁰ C | |
| Stability vs Supply | +/-0.3ppm | |
| Supply Voltage | +3V (W) +5V (X) | Specify |
| Supply Current | 2.0mA | |
| Output Level | 0.7V p-p (min) Vcc 3V 1.0V p-p (min) Vcc5V | |
| Output Waveform | DC Cut Clipped Sine | |
| Output Load | 10KΩ//10pF | |
| Aging | +/-1ppm / yr | |
| Trim Range | +/-3ppm Internal Trimmer | |

| Environmental & Mechanical | |
|----------------------------|--|
| Humidity | +40 ⁰ C +/-2 ⁰ C 90% RH for 200Hours |
| Thermal Shock | +85 ⁰ C for 30 mins -30 ⁰ C for 30 mins |
| Vibration | 10 - 55Hz 2mm amplitude 2 hours XYZ axis |
| Soldering Condition | 235 +/-5 ⁰ c 2 Seconds +/-0.5 S |



Part Numbering ECT396 Z 9.60 C W I



| A | B | C | D | E | F | G | H | J |
|------|------|-----|------|-----|-----|------|------|-----|
| 12.1 | 11.4 | 3.5 | 9.60 | 8.2 | 1.0 | 7.62 | 2.54 | 2.7 |

Dimensions in mm

| Pin | 1 | 2 | 3 | 4 | 5 | 6 |
|-----|-----|-----|-----|-----|-----|-----|
| | Vcc | N/C | GND | O/P | GND | GND |

ECM Electronics Limited, Penmaen House, Ashington, West Sussex, RH20 3JR, UK
Tel: +44(0)1903 892810: Fax: +44(0)1903 892738. Email: ecm@ecmelectronics.co.uk

Although we have attempted to accurately reflect the products we market. ECM reserve the right without prior notice to discontinue any product or make design changes we believe necessary. Issue 1