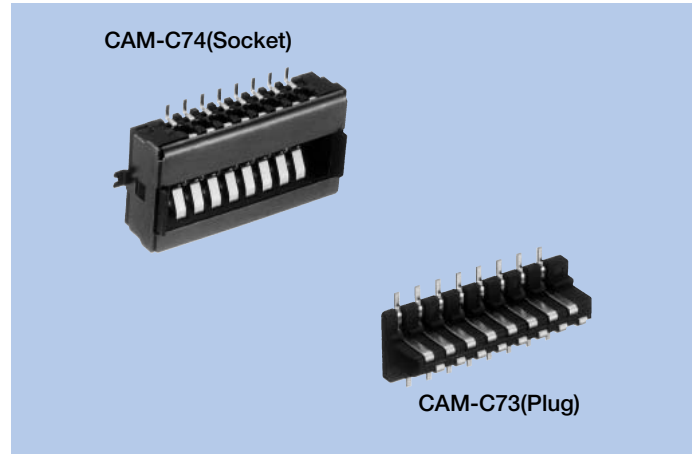


Detach Connectors CAM-C73 · C74

FEATURES

1. Due to these connectors, the front panel can be removed or mounted for preventing the car audio from being stolen.
2. The socket has a coupling position guide to absorb play when coupled.
3. A metallic cover is mounted for preventing static electricity.



HOW TO ORDER

1.CAM-C73 (Plug)

C73-016-02 0-A G G A A
 1 2 3 4 5 6 7 8 9

- 1 Series No. (C73)
- 2 No. of contacts (016 : 16pins)
- 3 Housing material (02 : PBT resin)
- 4 UL grade of housing (0 : UL94V-0)
- 5 Connect plating (A : Gold)
- 6 Contact plating thickness (G : 0.3μm)
- 7 Contact pin lead style (G : Angle SMT)
- 8 Accessory for connector outside (A : None)
- 9 Accessory for connector inside (A : None)

2.CAM-C74 (Socket)

C74-016-02 0-A G G A A
 1 2 3 4 5 6 7 8 9

- 1 Series No. (C74)
- 2 No. of contacts (016 : 16pins)
- 3 Housing material (02 : PBT resin)
- 4 UL grade of housing (0 : UL94V-0)
- 5 Connect plating (A : Gold)
- 6 Contact plating thickness (G : 0.3μm)
- 7 Contact pin lead style (G : Angle SMT)
- 8 Accessory for connector outside (A : None)
- 9 Accessory for connector inside (A : None)

SPECIFICATIONS

ELECTRICAL CHARACTERISTICS

Rated Voltage	14V DC
Rated Current	1A
Withstanding Voltage	500V AC (rms) 1minute
Insulation Resistance	100MΩ min. (at 500V DC)
Contact Resistance	70mΩ max.

MECHANICAL CHARACTERISTICS

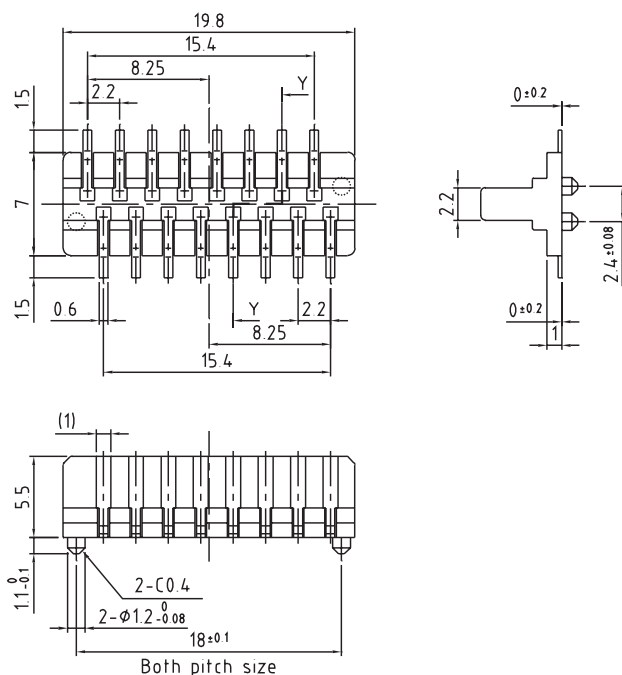
Life (Matching Cycle)	10,000 times
Total Insertion Force	14.7N (1.5kgf) max.
Overall Rebound Force	8.18N (0.835kgf) max.
Using Temperature Range	-30~+85°C

MATERIAL & FINISH

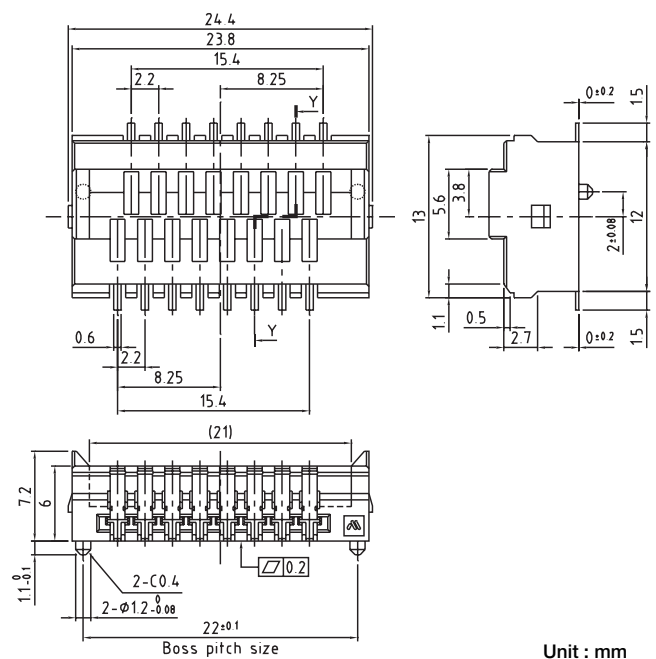
Component Parts		Material	Finish
CAM-C73	Housing	PBT resin	—
	Contact	Copper Alloy	Gold plating
CAM-C74	Housing	PBT resin	—
	Contact	Copper Alloy	Gold plating
	Cover	Copper Alloy	Black nickel plating, Tin reflow plating

DIMENSIONS

CAM-C73



CAM-C74



Unit : mm